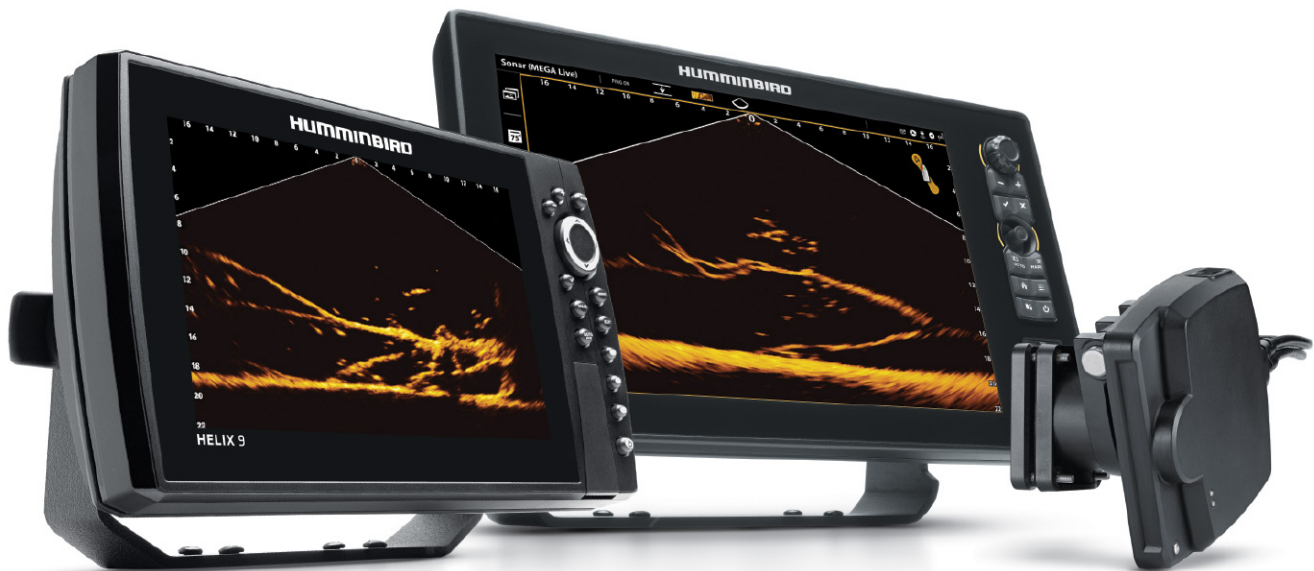


# MEGA LIVE IMAGING

## Operations Guide

532771-1EN\_B



 **HUMMINBIRD®**


SIMPLY. CLEARLY. BETTER.


# THANK YOU!


---


Thank you for choosing Humminbird®, the #1 name in marine electronics. Humminbird has built its reputation by designing and manufacturing top quality, thoroughly reliable marine equipment. Your Humminbird is designed for trouble-free use in even the harshest marine environment. In the unlikely event that your Humminbird does require repairs, we offer an exclusive Service Policy. For complete details, see the separate warranty card included with your unit. We encourage you to read this operations manual carefully in order to get the full benefit from all the features and applications of your Humminbird product.


Contact Humminbird Technical Support at [humminbird.com](http://humminbird.com) or call **1-800-633-1468**.


 **WARNING!** This device should not be used as a navigational aid to prevent collision, grounding, boat damage, or personal injury. When the boat is moving, water depth may change too quickly to allow time for you to react. Always operate the boat at very slow speeds if you suspect shallow water or submerged objects.


 **WARNING!** The electronic chart in your Humminbird unit is an aid to navigation designed to facilitate the use of authorized government charts, not to replace them. Only official government charts and notices to mariners contain all of the current information needed for the safety of navigation, and the captain is responsible for their prudent use.


 **WARNING!** Humminbird is not responsible for the loss of data files [waypoints, routes, tracks, groups, recordings, etc.] that may occur due to direct or indirect damage to the unit's hardware or software. It is important to back up your control head's data files periodically. Data files should also be saved to your computer before restoring the control head defaults or updating the software. Visit our Web site at [humminbird.com](http://humminbird.com) and download your control head operations manual for details.


 **WARNING!** Disassembly and repair of this electronic unit should only be performed by authorized service personnel. Any modification of the serial number or attempt to repair the original equipment or accessories by unauthorized individuals will void the warranty.


 **NOTE:** Some features discussed in this manual require a separate purchase. Every effort has been made to clearly identify those features. Please read the manual carefully in order to understand the full capabilities of your model.


 **NOTE:** The illustrations in this manual may not look the same as your product, but your unit will function in a similar way.

 **NOTE:** To purchase accessories for your control head, visit our Web site at [humminbird.com](http://humminbird.com) or contact Humminbird Technical Support at **1-800-633-1468**.

 **NOTE:** The procedures and features described in this manual are subject to change without notice. This manual was written in English and may have been translated to another language. Humminbird is not responsible for incorrect translations or discrepancies between documents.

 **NOTE:** Product specifications and features are subject to change without notice.

 **NOTE:** Humminbird verifies maximum stated depth in saltwater conditions, however actual depth performance may vary due to transducer installation, water type, thermal layers, bottom composition, and slope.

 **NOTE:** For MEGA Live Imaging troubleshooting and maintenance information, please see your **MEGA Live Imaging Installation Guide**. The guide can also be downloaded from our Web site at [humminbird.com](http://humminbird.com).

**ENVIRONMENTAL COMPLIANCE STATEMENT:** It is the intention of Johnson Outdoors Marine Electronics, Inc. to be a responsible corporate citizen, operating in compliance with known and applicable environmental regulations, and a good neighbor in the communities where we make or sell our products.

**WEEE DIRECTIVE:** EU Directive 2002/96/EC “Waste of Electrical and Electronic Equipment Directive [WEEE]” impacts most distributors, sellers, and manufacturers of consumer electronics in the European Union. The WEEE Directive requires the producer of consumer electronics to take responsibility for the management of waste from their products to achieve environmentally responsible disposal during the product life cycle.

WEEE compliance may not be required in your location for electrical & electronic equipment (EEE), nor may it be required for EEE designed and intended as fixed or temporary installation in transportation vehicles such as automobiles, aircraft, and boats. In some European Union member states, these vehicles are considered outside of the scope of the Directive, and EEE for those applications can be considered excluded from the WEEE Directive requirement.



This symbol (WEEE wheelie bin) on product indicates the product must not be disposed of with other household refuse. It must be disposed of and collected for recycling and recovery of waste EEE. Johnson Outdoors Marine Electronics, Inc. will mark all EEE products in accordance with the WEEE Directive. It is our goal to comply in the collection, treatment, recovery, and environmentally sound disposal of those products; however, these requirements do vary within European Union member states. For more information about where you should dispose of your waste equipment for recycling and recovery and/or your European Union member state requirements, please contact your dealer or distributor from which your product was purchased.

**ROHS STATEMENT:** Product designed and intended as a fixed installation or part of a system in a vessel may be considered beyond the scope of Directive 2002/95/EC of the European Parliament and of the Council of 27 January 2003 on the restriction of the use of certain hazardous substances in electrical and electronic equipment.

APEX™, MEGA Live™, Down Imaging®, Fortrex™, HELIX®, Humminbird®, Minn Kota®, Side Imaging®, SOLIX®, Ultrex™ are trademarked by or registered trademarks of Johnson Outdoors Marine Electronics, Inc.

Adobe, Acrobat, Adobe PDF, and Reader are either registered trademarks or trademarks of Adobe Systems Incorporated in the United States and/or other countries.

# TABLE OF CONTENTS

---

<b>Introduction</b>	<b>5</b>	<b>Change the MEGA Live Mode</b>	<b>36</b>
Important Information .....	5	Understanding the MEGA Live Modes.....	36
Humminbird Control Head.....	5	Change the MEGA Live Modes .....	36
<b>MEGA LIVE Imaging Sonar</b>	<b>6</b>	Set the Display Mode .....	38
<b>Power On and Confirm Connections</b>	<b>8</b>	<b>Change the MEGA Live View Display Settings</b>	<b>39</b>
1. Power On the MEGA Live Imaging Transducer and the Control Head.....	8	Change the View Color.....	39
2. Confirm MEGA Live Connection on the Humminbird Control Head .....	8	Adjust Sensitivity, Contrast and Range.....	40
3. Confirm GPS Reception .....	10	Turn On/Off Persistence.....	42
<b>Update Software</b>	<b>13</b>	Turn On/Off Interference Rejection.....	43
Register Products .....	13	Turn On/Off Overlays .....	43
Export Settings and Navigation Data .....	13	<b>Zoom In/Out</b>	<b>45</b>
Check the Current Software Version .....	14	Activate the Cursor.....	45
Update Control Head Software with an SD Card .....	15	Zoom In/Out .....	45
Update Accessory Software with an SD Card .....	15	<b>Mark and Display Waypoints</b>	<b>46</b>
Update Software with FishSmart .....	16	<b>Start and Stop Recording</b>	<b>47</b>
<b>Set Up MEGA Live Imaging on the Network</b>	<b>17</b>	Start Recording .....	47
APEX/SOLIX Series Networking .....	17	Stop Recording.....	47
HELIX Series Networking.....	18	Play a Recording.....	47
<b>Set Deployment Depth and Installation Type</b>	<b>21</b>	Stop Playback .....	48
<b>Start/Stop MEGA Live Imaging Operation</b>	<b>22</b>	Delete a Recording .....	48
Start Pinging .....	22	<b>Power Off</b>	<b>49</b>
Stop Pinging .....	24	<b>Contact Humminbird</b>	<b>50</b>
Wet Switch .....	25		
<b>What's on the MEGA Live Imaging Display</b>	<b>26</b>		
<b>MEGA Live Imaging Views</b>	<b>27</b>		
APEX/SOLIX Series Views.....	27		
HELIX Series Views .....	29		
MEGA Live View.....	30		
MEGA Live/2D Sonar Combo View .....	31		
MEGA Live/2D Zoom Combo View.....	32		
MEGA Live/Down Imaging Combo View.....	33		
MEGA Live/2D Sonar/Down Imaging Combo View .....	34		
MEGA Live/Chart Combo View .....	35		

# INTRODUCTION

Thank you for purchasing the Humminbird® MEGA Live™ Imaging transducer. We encourage you to read this manual carefully in order to understand MEGA Live Imaging and how to use this Humminbird advanced accessory on the water. Some of the equipment requirements and menu options depend on your control head. Whether you have an APEX™, SOLIX® or HELIX® fish finder, every effort has been made to clearly identify those features throughout this manual.

## Important Information

Before you use the MEGA Live Imaging transducer on the water, it is important to understand the following:

<b>Speed</b>	The MEGA Live Imaging transducer is intended for use at trolling speeds. The transducer should NOT be in the water during high speed travel.
<b>Obstructions</b>	Be aware of obstructions in the water that could damage the transducer.
<b>Powering Off</b>	When the boat is at dock or in storage, the MEGA Live Imaging transducer should be turned off at the switch to prevent wear and tear. See <b>Power Off</b> for more information.
<b>Setting Up the Control Head</b>	The control head must be set up correctly to add the MEGA Live Imaging features to the Menu System and View Rotation. See <b>Set Up MEGA Live on the Network</b> and <b>MEGA Live Imaging Views</b> .

## Humminbird Control Head

This accessory manual describes the functionality that is added to your APEX, SOLIX or HELIX control head when it is connected to the MEGA Live Imaging transducer. For additional information about the Humminbird control head operations, see your control head operations manual. To download the manual from our Web site, go to [humminbird.com](http://humminbird.com).

## Compatibility

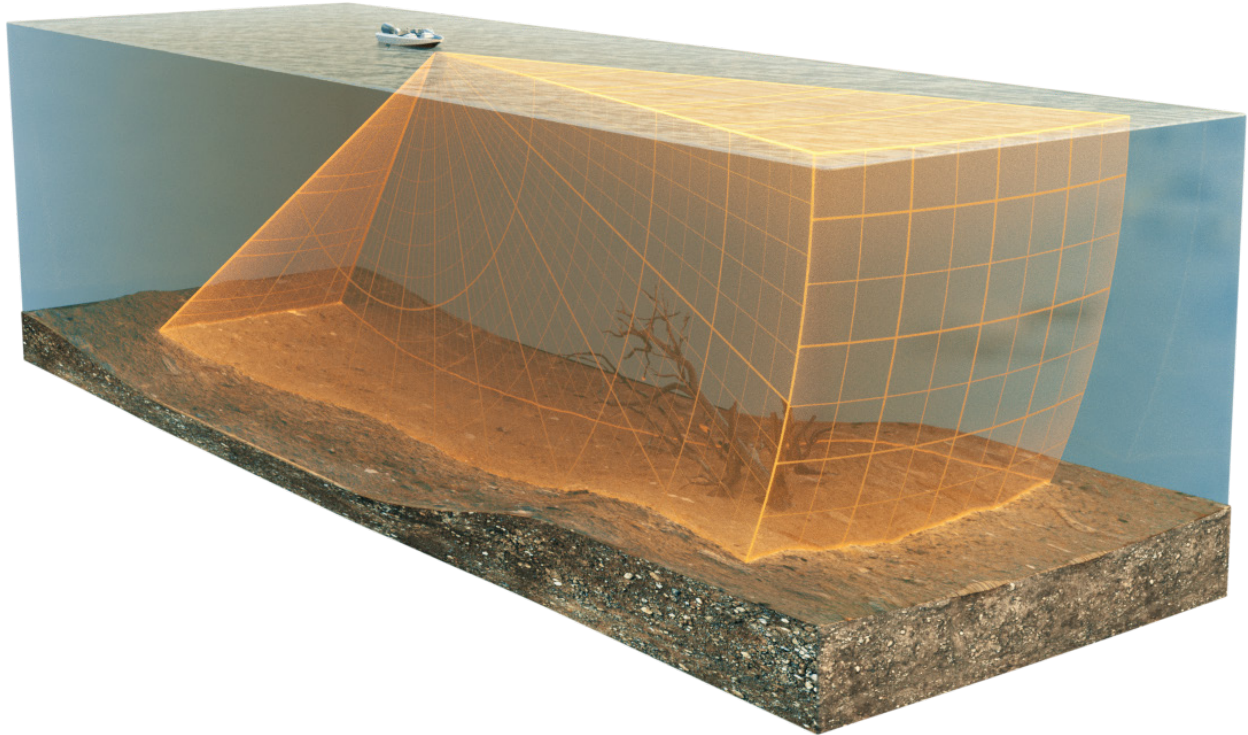
MEGA Live Imaging is compatible with all APEX models, SOLIX models, HELIX G3N and G4N models with MEGA Imaging+, and HELIX 7 G4N models with MEGA Down Imaging or MEGA Side Imaging.

# MEGA LIVE IMAGING SONAR

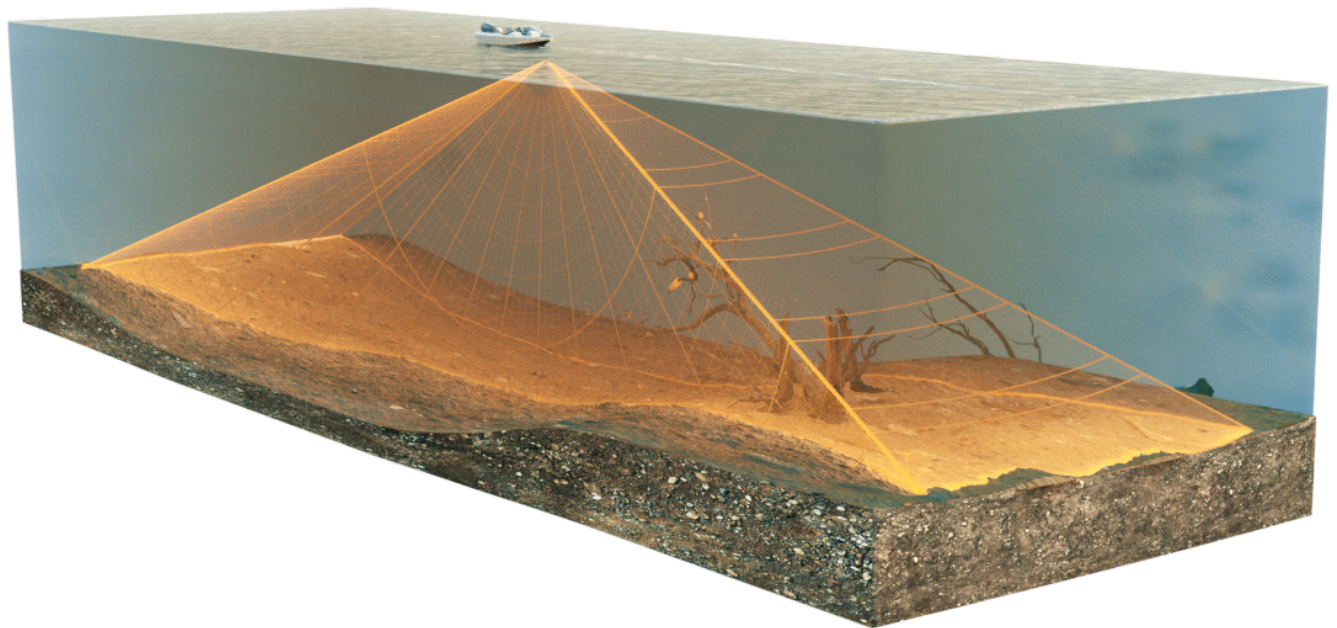
The MEGA Live Imaging transducer deploys into the water with the your Minn Kota® Ultrex™ or Fortrex® trolling motor. See the *MEGA Live Imaging Installation Guide* for more information.

Multiple viewing options provided by the included trolling motor shaft mount allow for a view of the area in front of, around, and below your boat. Watch fish and structure in real-time with a range of up to 150 feet and without gaps in sonar coverage.

**Forward View**

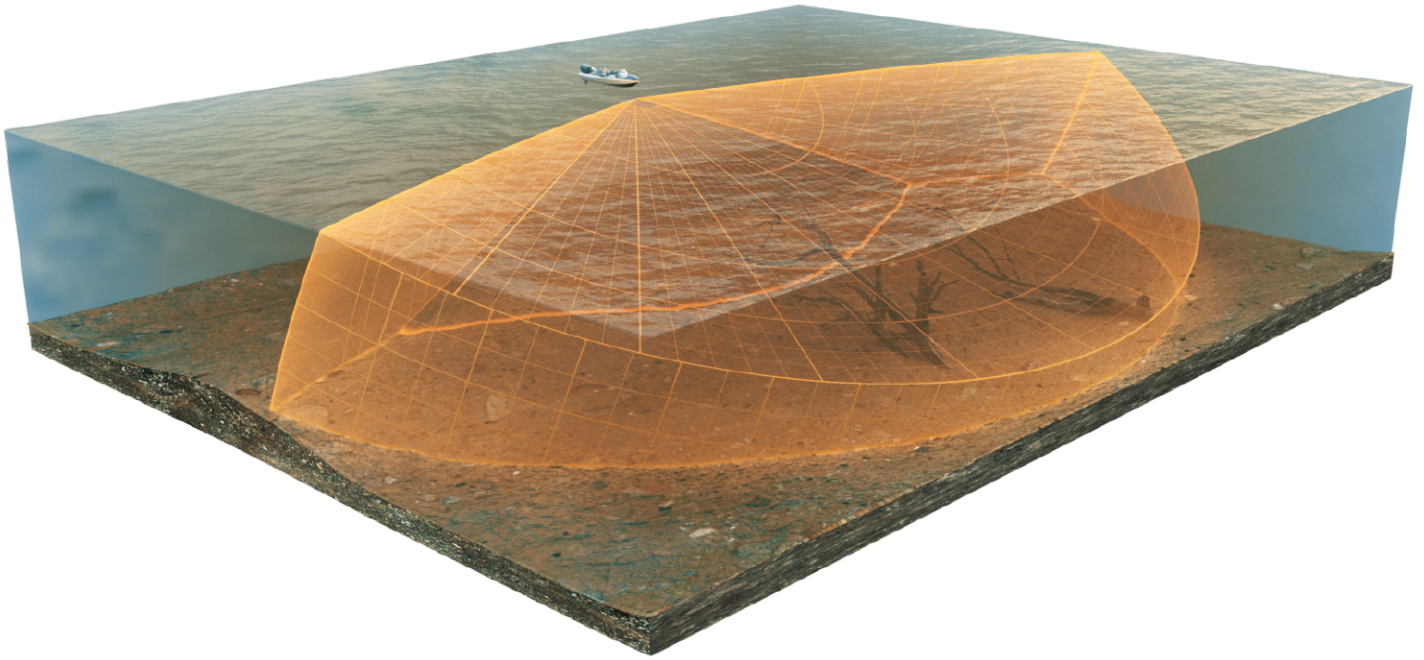



**Down View**





## Landscape Mode



 **NOTE:** The transducer's performance is affected by such factors as boat speed, wave action, bottom hardness, water conditions, and installation.

# POWER ON AND CONFIRM CONNECTIONS

All equipment should be connected and powered before you turn on the control head. See the *MEGA Live Imaging Installation Guide* for more information.

When the control head detects the MEGA Live Imaging transducer, it will subscribe to it automatically as a sonar source. The related views and menus will be added to the system. Use the following instructions to power on the control head and confirm the MEGA Live Imaging transducer and the optional GPS receiver/compass [heading sensor] are detected by the unit.

**CAUTION!** It is important to finish all installation connections before powering on the control head.

## 1 | Power On the MEGA Live Imaging Transducer and the Control Head

### APEX/SOLIX Series

1. Turn on the power source from the main switch.
2. On the control head, press and hold the POWER key.
3. Select Normal mode.

### HELIX Series

1. Turn on the power source from the main switch.
2. On the control head, press the POWER key.
3. When the Title screen is displayed, press the MENU key to open the Start-Up Options Menu.
4. Use the Cursor Control key to choose Normal, and press the RIGHT Cursor key to select it.

## 2 | Confirm MEGA Live Connection on the Humminbird Control Head

### APEX/SOLIX Series

You can confirm the MEGA Live connection by checking the system status bar. Each accessory connected to the Humminbird control head is represented by a status icon in the system status bar.

**APEX/SOLIX Status Bar (top of screen)**








1. Press the HOME key.
2. Review the top, right corner of the status bar.

**Confirm MEGA Live is shown as Connected and In Water.** It may take up to one minute for the MEGA Live to be detected.

**Unconnected:** If the MEGA Live icon is not shown in the status bar, check the cable and power connections to confirm they are secure and powered on. Review the installation guide that was included with your MEGA Live Imaging transducer to confirm it is installed correctly.



MEGA Live Status Icon	Icon Description
	<b>Connected/In Water/Pinging:</b> The MEGA Live is connected, in the water, and pinging.
	<b>Connected/In Water/Not Pinging:</b> The MEGA Live is connected and in the water, but it is not pinging.
	<b>Connected/Out of Water:</b> The MEGA Live is connected, but the wet indicator is out of the water.
	<b>Connection Lost:</b> The connection to the MEGA Live was lost.

 **NOTE:** For additional system status, select Home > Settings > Network > Network Info.

## HELIX Series

You can confirm the MEGA Live connection by checking the Accessory Test view.

1. Press and hold the VIEW key.
2. Select System > Accessory Test.

**Confirm MEGA Live is shown as Connected.** It may take up to two minutes for the MEGA Live to be detected.

**Unconnected:** If the MEGA Live icon is listed as Unconnected, check the cable and power connections to confirm they are secure and powered on. Review the installation guide that was included with your MEGA Live Imaging Transducer to confirm it is installed correctly.

### HELIX Accessory Test




Depth		ft		Accessory Test	
Temp.1	41.4	360 Imaging		UNCONNECTED	
	35.1	BT Talon		UNCONNECTED	
N	34.19530°	GPS + Heading Sensor		CONNECTED	GPS + Heading Sensor listed as connected
W	083.99157°	i-Pilot BT v9.999		CONNECTED	
Time	11:31 AM	MEGA 360 Imaging		UNCONNECTED	MEGA Live Imaging listed as connected
Speed	5.6	MEGA Live v0.011 S/N: 200923015692		CONNECTED	
	5:06	NMEA 2000		CONNECTED	
VLT	1.9	CHIRP-Radar		CONNECTED	
	0.4	Speed		CONNECTED	
	13.4	Temperature		CONNECTED	

### 3 | Confirm GPS Reception



Use the instructions in this section to confirm the control head has GPS reception. GPS and a compass (heading sensor) are required to enable the boat icon on the control head with the MEGA Live Imaging transducer.

#### APEX/SOLIX Series

1. From the Home screen, review the top, right corner of the status bar, and confirm the GPS receiver is detected and active.

GPS Status Icon	Icon Description
	<b>Detected and Active:</b> The GPS receiver is detected and a GPS fix has been obtained.
	<b>Connected but not Detected or Active:</b> The GPS receiver is connected, but not detected on the network or no GPS fix has been obtained.
	<b>Connected but not Transmitting/Receiving:</b> The GPS receiver is detected, but it doesn't have a GPS fix.

2. If the Detected and Active icon is visible, GPS fix has been obtained.
3. From the HOME screen, review the top, right corner of the status bar, and confirm the compass (heading sensor) is on and data is being received.


Compass Status Icon	Icon Description
	<b>Detected and Active:</b> The compass (heading sensor) is on and heading data is being received.
	<b>Connected but not Detected or Active:</b> The compass is not detected on the network and not transmitting data.

#### Check GPS Reception and Satellite Strength

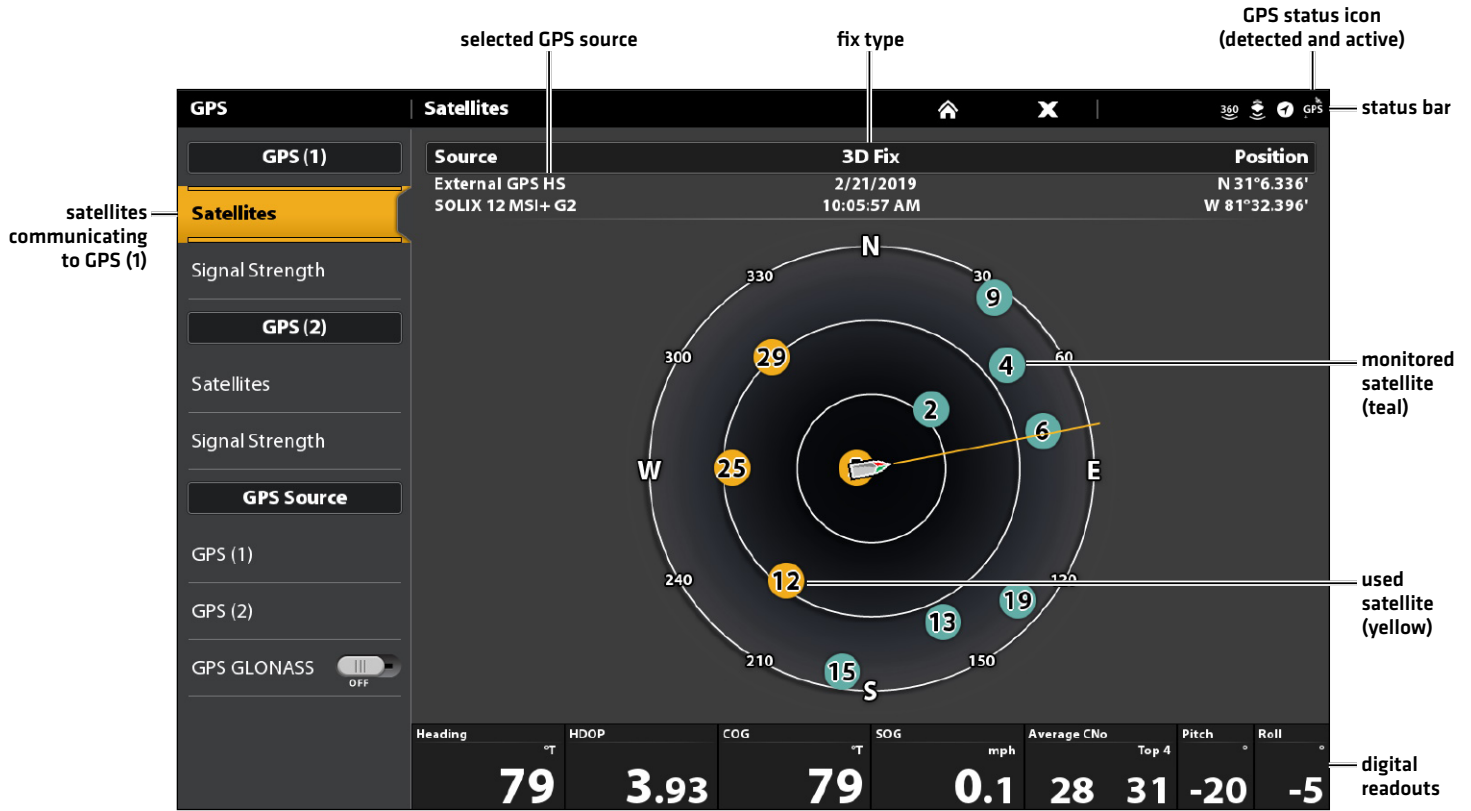
The GPS tool provides two ways to view the satellites communicating with the GPS receiver. **Yellow** indicates that the satellite is being used to determine your current position. **Teal** indicates that the satellite is being monitored but not used. The following data is also displayed:

- **Position** [latitude and longitude]
- **GPS Fix Type:** reported as No Fix, 2D Fix, 3D Fix, or Enhanced. An Enhanced fix has been augmented using information from WAAS, EGNOS, or MSAS. A 3D or Enhanced Fix is required for navigation.
- **HDOP [the Horizontal Dilution of Precision]:** a GPS system parameter which depends on the current satellite configuration. HDOP is used to calculate the Estimated Position Error.

1. Press the HOME key.
2. Select the **GPS** tool.
3. Depending on your network configuration, select **GPS [1] > Satellites** or **GPS [2] > Satellites**.

 **NOTE:** You can manually change which GPS receiver is the selected source for GPS [1] or GPS [2]. For more information about GPS and selecting GPS sources, see your control head operations manual.

### GPS [1] Satellite Sky Chart



4. Under GPS [1] or GPS [2], select Signal Strength.

### Signal Strength (bar graph)




Signal Strength (GPS 1/GPS 2): displays vertical bar graphs indicating the satellite signal strengths with the respecting CNO (Carrier-to-Noise) value (0 to 60).

## HELIX Series

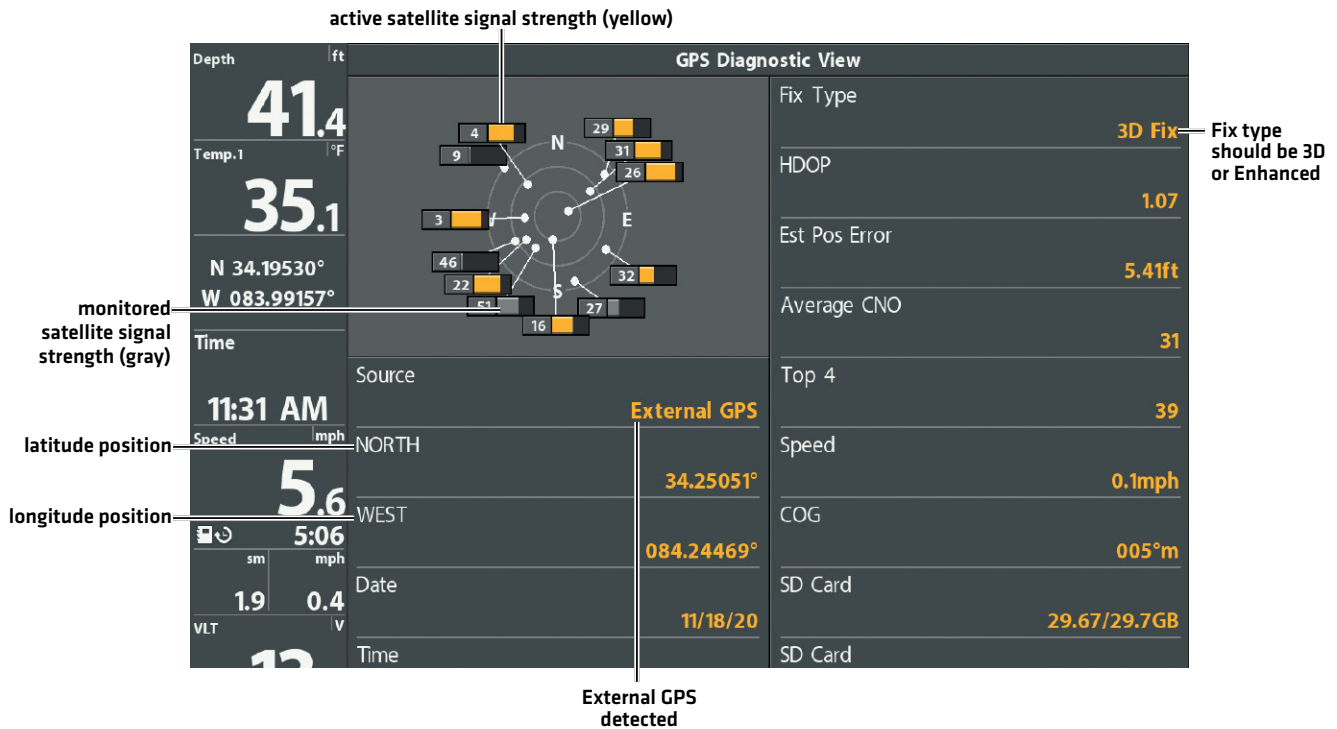
1. Press and hold the VIEW key.
2. Select System > GPS Diagnostic View.  
Confirm that GPS + Heading Sensor (optional) are listed as Connected. See the illustration *HELIX Accessory Test*.
3. Press and hold the VIEW key.
4. Select System > GPS Diagnostic View.

Confirm **GPS Fix Type** is shown as Enhanced or 3D.

Confirm that the **latitude/longitude position** readout is displayed.

 **NOTE:** If the GPS Diagnostic View or Accessory Test is not displayed in the View Rotation, press the MENU key twice to open the Main Menu. Select the Views tab > GPS Diagnostic View or Accessory Test. Change the setting for each view to Visible.


### Reviewing GPS Reception



**GPS Reception:** The sky chart displays the satellite number and signal strength bar.

**GPS Fix Type:** reported as No Fix, 2D Fix, 3D Fix, or Enhanced. An Enhanced Fix has been augmented using information from WAAS, EGNOS, or MSAS.

**HDOP [the Horizontal Dilution of Precision]:** a GPS system parameter which depends on the current satellite configuration. HDOP is used to calculate the Estimated Position Error.

 **NOTE:** To manually change your GPS source, change the output frequency, or turn on GLONASS, see your control head operations manual.

# UPDATE SOFTWARE

Your control head model may need a software update to work with the MEGA Live Imaging transducer. We recommend that you read the following section completely before starting any software updates.

**Control Head Required Software:** The following control head software version is required to operate the MEGA Live Imaging transducer:

- APEX and SOLIX Series: 4.020 or higher
- HELIX Series: 2.660 or higher

**MEGA Live Software:** The MEGA Live has separate software updates from the control head. After the software is updated on the control head, you must download any accessory software updates. See your control head operations manual for more details.

**Preparation:** We recommend that you read the following section completely before starting any software updates. The Humminbird control head will take approximately 10 minutes to update, and each Humminbird control head on the network must be updated individually. Accessories take approximately 5 minutes to update.

**Supplies:** In addition to your Humminbird equipment, you will need a computer with Internet access and a blank SD or microSD card (depending on your control head).

**Technical Support:** If you have any questions about the software update process, contact Technical Support by visiting our Web site at [humminbird.com](http://humminbird.com) or by calling **1-800-633-1468**.

## Register Products

Register your Humminbird equipment so that you will receive the latest Humminbird news, including accessory compatibility and software update information.

1. Go to our Web site at [humminbird.com](http://humminbird.com). Select Support > Register Your Product.
2. Follow the on-screen prompts to register your products.

## Export Settings and Navigation Data

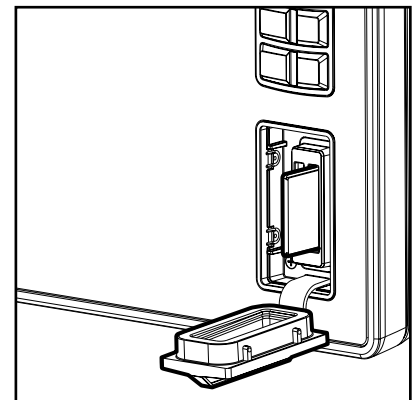
Before the control head software is updated or restored to system defaults, it is important to back up your control head data files (including navigation data and screen snapshots) and menu settings to an SD or microSD card.

**WARNING!** Humminbird is not responsible for the loss of data files (waypoints, routes, tracks, groups, snapshots, recordings, etc.) that may occur due to direct or indirect damage to the unit's hardware or software. It is important to back up your control head's data files periodically. Data files should also be saved to your computer before restoring the unit's defaults or updating the software.

**WARNING!** Do NOT leave the control head SD or microSD card slot cover open. The slot cover should always be closed to prevent water damage to the unit.

**NOTE:** See your control head operations manual for more information about exporting settings and navigation data.

### Inserting an SD Card



**Vertical Slot:**  
Insert the SD card with the label facing left.

**Horizontal Slot:**  
Insert the SD card with the label facing up.

## APEX/SOLIX Series

### Export Data and Menu Settings

---

Use the instructions in this section before you restore the control head defaults or update software.

1. Install the SD or microSD card into the control head card slot.
2. Press the HOME key.
3. Select the Files tool.
4. Under Export, select Nav Data.
5. Follow the on-screen prompts.
6. **Select a Save Location:** Save to the SD Card.
7. Repeat steps 4 and 5 to export Menu Settings and Radar Installation settings (if applicable to your installation).
8. **Networked Units:** Repeat the steps in this section on each control head.

### Copy Internal Images

---

If you have screen snapshots saved to the control head, use the following instructions to copy them to an SD or microSD card.

1. Confirm the SD or microSD card is installed in the control head card slot.
2. Press the HOME key.
3. Select the Images tool. Tap the icon, or press the ENTER key, to open.
4. Under Source, select Internal.
5. Press and hold one of the screen snapshots.  
**OR**  
Use the Joystick to select a screen snapshot. Press the MENU key.
6. Select Copy All.
7. **Select a Save Location:** Save to the SD Card (left slot = SD Card 1, right slot = SD Card 2)
8. Repeat the steps in this section on each control head.

## HELIX Series

### Export Navigation Data

---

1. Install the SD card or microSD card according to the instructions in your control head operations manual.
2. Power on the control head.
3. **Main Menu:** Press the MENU key twice. Select the Nav tab.
4. Select Waypoints, Routes, Tracks. Press the RIGHT Cursor key.
5. Select Options > Select All and ... > Export.
6. Follow the on-screen prompts to confirm or cancel the export.

### Check the Current Software Version

It is helpful to review the software version number that is currently installed on the control head and each accessory.


#### APEX/SOLIX Series


1. Press the HOME key.
2. Select Settings > Network > Network Info.
3. The Network Info dialog box shows a section for each device connected to the network. Scroll to each section to note the software version number listed.


#### HELIX Series

1. Press and hold the VIEW key.
2. Select System > System Status.
3. Confirm the Software Version listed.

## Update Control Head Software with an SD Card

 **WARNING!** Before the control head software is updated or restored to system defaults, export your menu settings, radar settings, and navigation data. Copy your screen snapshots to an SD card. See **Export Settings and Navigation Data** for details.

 **NOTE:** If you have more than one control head on the network, go to each control head to install the latest software update. Control head software updates cannot be updated through another networked unit.

 **NOTE:** When you install the SD card with the software file into your control head, the control head will detect the update and provide an automatic prompt to install the software. You can follow the prompts or choose to install the software at a later time. See your control head operations manual for more information.

1. Install a formatted SD or microSD card into the computer card slot.
2. Go to **humminbird.com**, and click Support > Software Updates.
3. Click on your control head model. The available software updates are listed as downloads under each product. Confirm the file name is for your control head model.
  - Read the notices and instructions, and select Download.
  - Follow the on-screen prompts to save the software file to the SD or microSD card.
4. Repeat step 3 to download the software updates posted to each product.
5. Insert the SD or microSD card [with the software file] into the control head card slot.
6. Power on your Humminbird control head. Start **Normal** mode.
7. Follow the on-screen prompts to update the control head software.
8. When the software update is complete, remove the SD or microSD card from the control head card slot.
9. **Restart:** If you don't have any other software updates to install, power off the control head, and restart it.

## Update Accessory Software with an SD Card

1. Install a formatted SD or microSD card into the computer card slot.
2. Go to **humminbird.com**, and click Support > Software Updates.
3. Scroll down to Accessories and Mapping. The available software updates are listed as downloads under each accessory product. Confirm your control head model is listed in the software description.
  - Read the notices and instructions, and select Download.
  - Follow the on-screen prompts to save the software file to the SD or microSD card.
4. Insert the SD or microSD card [with the software file] into the control head card slot.
5. Power on your Humminbird control head. Start **Normal** mode.
6. **APEX/SOLIX:** Select the Files tool. From the Software Update tab, scroll to MEGA Live on the Accessories list. Confirm that the most current software version is selected from the list, and select Install Now.

**HELIX:** The software will be automatically detected. It may take up to two minutes for the software to be detected on the network, and the control head will display a dialog box to indicate that the update is in progress.
7. When the software update is complete, remove the SD or microSD card from the control head card slot.
8. **Restart:** If you don't have any other software updates to install, power off the control head, and restart it.



## Update Software with FishSmart

You can use the FishSmart App to download and push software updates directly to your Humminbird control head or accessory.



**NOTE:** Your control head must already be running software release 1.610 or higher for HELIX Series or 3.110 or higher for APEX and SOLIX Series to support this feature.



**NOTE:** You must first download the FishSmart App and pair your mobile device to your control head. See the FishSmart User Manual for more information.

1. Open the FishSmart App on your mobile device.
2. **Apple iOS:** Tap the System menu icon.  
**Google Android:** Tap the FishSmart main menu. Select system.
3. Tap Update next to the selected unit. The download progress is displayed on the screen.
4. Tap Transfer next to the selected unit once the download is complete.
5. Confirm the estimated transfer time.
6. Tap the checkbox to select where to upload the software update [internal storage, card slot 1, or card slot 2].



**NOTE:** For APEX and SOLIX Series control heads, you cannot download software updates to an SD or microSD card with LakeMaster charts saved to it.

7. Tap Transfer. The upload progress is displayed on the System menu in FishSmart and in the System Status view on the control head.
8. Follow the on-screen prompts on the control head to complete the software installation.

# SET UP MEGA LIVE IMAGING ON THE NETWORK

Use the instructions in this section if you have more than one Humminbird control head connected to the network. Configuring the network synchronizes the control head settings.



**NOTE:** If you have selected the MEGA Live Imaging transducer on the network during the installation, the other settings in this section are optional. The depth source, temperature source, and alarms will be selected automatically based on the other connected equipment. Use this section to confirm installation settings or to change the sources to your preference. The settings will be saved after you power off the control head.

Before you start, make sure all of your control heads and sources (GPS, transducers, temp/speed accessories, etc.) for your fishing system have been installed. See the equipment installation guides for details. You may need to purchase an Ethernet switch, Ethernet connection cables, or y-cables, depending on your setup.

When the Humminbird network is installed, each control head automatically selects a primary source (transducer, temperature, and GPS). The control head selects the equipment connected to it as its primary source, but you can choose any compatible source on the network. Make sure to review the *MEGA Live Imaging Installation Guide* to ensure MEGA Live Imaging is set up as the sonar source.

## APEX/SOLIX Series Networking

Your APEX or SOLIX control head will automatically detect and subscribe to MEGA Live Imaging, and the related views and menus will be added to the control head. Use the following instructions to review the selected sonar source.

### Open the Sonar Source Menu

1. Press the HOME key.
2. Select Settings.
3. Select CHIRP Sonar.
4. Select Sonar Source.

### Select Sonar Sources

Use the instructions in this section to assign sonar sources to each control head. The sonar sources can be shared between control heads or you can use different sonar sources on each control head.

1. From the Sonar Source menu, select the tab for the sonar source you want to assign.  
The MEGA Live Imaging transducer will be displayed on the MEGA Live tab.
2. Select the transducer connection location. The connection locations are displayed as follows:



**Selected Control Head (Local):** the control head you are actively using



**Remote Control Head:** additional control heads connected to the network

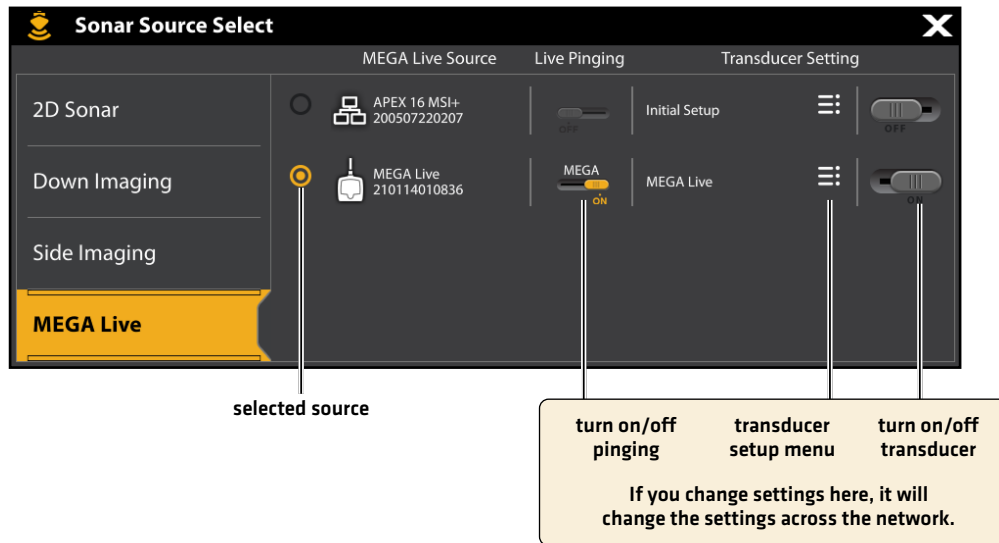


**Black Box Sonar**



**MEGA Live Imaging**

3. Repeat steps 1 and 2 for each tab. You can select one sonar source on each tab.  
When you turn on/off pinging or change the transducer settings, all control heads sharing the transducer are affected.



## HELIX Series Networking

### Open the Network Source Setup Dialog Box

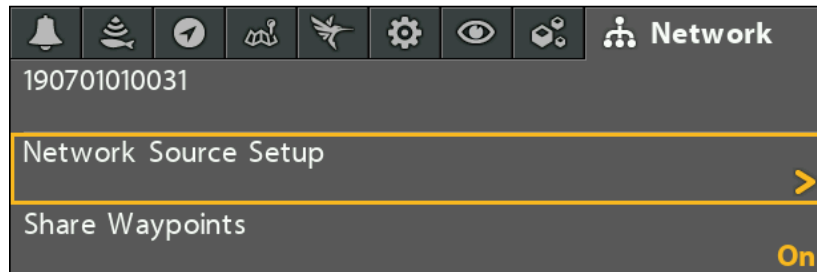
1. **Main Menu:** Press the MENU key twice.



**NOTE:** If a System View is displayed on the screen, you will only need to press the MENU key once to open the Main Menu.

2. Select the Network tab.
3. Select Network Source Setup. Press the RIGHT Cursor key.

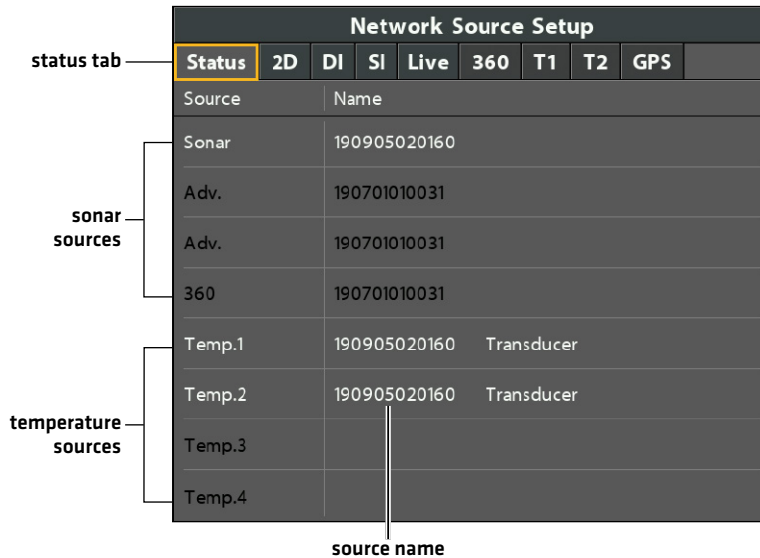
#### Opening the Network Source Setup Dialog Box



**Status Tab:** Review the status tab to see all detected sources in the network. If a source is grayed out, the source is detected, but the connection is lost or unavailable.

**Select a Source:** Review each source section to select a data source for each control head.

## Network Source Setup Dialog Box



### Select a Sonar Source

In addition to the MEGA Live Imaging transducer, you may have another Humminbird transducer connected directly to the control head and/or available in a Humminbird multiple-control head Ethernet network.

The sonar source may be auto-populated in the Network Source Setup dialog box, but it is important to confirm that the source selection matches your transducer and frequency preferences. You can use the Network Source dialog box to change the sonar source.

1. **Network Source Setup Dialog Box:** Select the Network tab > Network Source Setup. Press the RIGHT Cursor key.
2. Use the Cursor Control key to select a tab and choose a source. Press the CHECK/INFO key to select the source as follows:

<b>2D Traditional Sonar</b>	Select the 2D tab and select a 2D sonar source for the traditional sonar views.
<b>Down Imaging®</b>	Select the DI tab and select a Down Imaging sonar source.
<b>Side Imaging®</b>	Select the SI tab and select a Side Imaging sonar source.
<b>MEGA Live Imaging</b>	Select the Live tab and select the MEGA Live Imaging source.
<b>MEGA 360 Imaging</b>	Select the 360 tab and select the MEGA 360 Imaging source.
<b>Temperature Data</b>	Select a Temperature tab and select a temperature source or use the default temperature source.
<b>GPS Receiver/Heading Sensor</b>	Select the GPS tab and select the sensor that is attached to the control head. The type will be listed as Ext [externally connected].


A checkmark will display in the box to show it is selected.


## Selecting the MEGA Live Imaging Transducer


Press the RIGHT or LEFT Cursor keys to select a tab.

Network Source Setup								
Status	2D	DI	SI	Live	360	T1	T2	GPS
Name	Model		Frequency					
201111017919	MEGA Live		MEGA				<input checked="" type="checkbox"/>	

Use the Cursor Control key to choose the transducer, and press the RIGHT Cursor key or the CHECK/INFO key to select it.

 **NOTE:** If the control head is not capable of displaying a certain frequency from a transducer on the network, NONE will be displayed in the beam frequency column in the Network Source Setup dialog box.

 **NOTE:** The availability of beams is determined by the type of transducer that is connected to the control head and your Humminbird model. If a connected transducer is not displayed in the Network Source Setup dialog box, select the Main Menu > Sonar tab > Transducer Select or Connected Transducer, and set the transducer type.

 **NOTE:** If you have questions about which transducers are compatible with your control head, visit our Web site at [humminbird.com](http://humminbird.com) or contact Humminbird Technical Support at **1-800-633-1468**.

3. **Close:** Press the EXIT key until the dialog box is closed.

# SET DEPLOYMENT DEPTH AND INSTALLATION TYPE

This section will guide you through the following control head setup instructions:

- Setting the Installation Depth
- Selecting Port or Starboard Depth
- Setting the AHRS
- Selecting the Landscape Orientation type [for Landscape Mode only]

## Change the MEGA Live Installation Settings

If the position of objects on the display are slightly different than what you observe in the environment around you, use these menu options to adjust the display and correct the alignment. See the **MEGA Live Imaging Installation Guide** for more information.

### APEX/SOLIX Series

1. Press the HOME key.
2. Select Settings.
3. Select CHIRP Sonar.
4. Under MEGA Live, tap a menu option or use the Joystick to select it. Adjust the setting using the touch screen or keys, as follows:

### HELIX Series

1. **Main Menu:** Press the MENU key twice.
2. Select the Accessories tab > MEGA Live > MEGA Live Installation.
3. Use the Cursor Control key to select an option from the submenu, and press the RIGHT or LEFT Cursor keys to change the menu setting, as follows:

<b>Installation Depth</b>	Set the depth of the water from the surface to the MEGA Live Imaging transducer.
<b>Port/Starboard Installation</b>	Select your installation type.
<b>Use AHRS</b>	Set AHRS to Off, On or On Pitch and Roll. Turn AHRS ON to automatically select the orientation of the transducer [Down, Forward, or Landscape]. Select On Pitch and Roll to stabilize the bottom on your sonar returns.

# START/STOP MEGA LIVE IMAGING OPERATION

Use the instructions in this section to start and stop the MEGA Live Imaging ping.

## Start Ping

The transducer deploys into the water with the trolling motor. You can then start pinging from the MEGA Live View or from the Menu System.

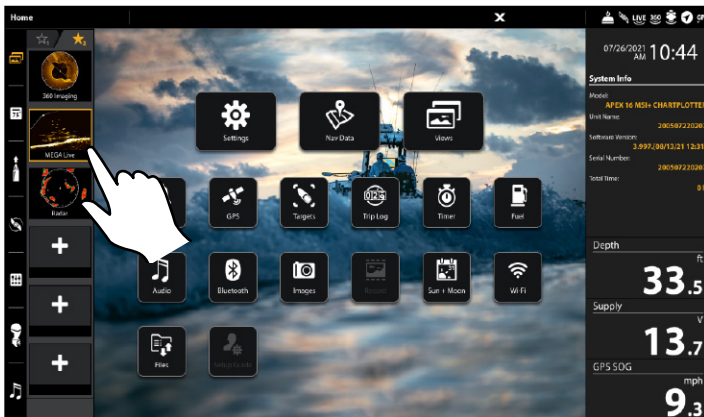
### Start Pinging from a MEGA Live View

When a MEGA Live Imaging transducer is connected to the control head, the MEGA Live View will be automatically added to the view database.

#### APEX/SOLIX Series

1. Tap the view widget icon in the side bar.
2. Tap MEGA Live.

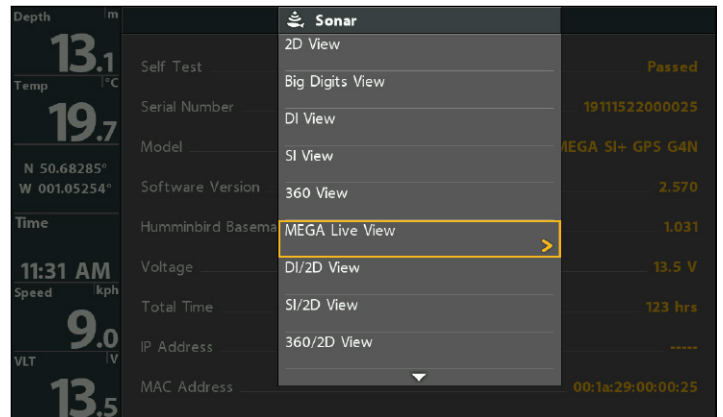
Pinging from a MEGA Live View (APEX)



#### HELIX Series

1. Press the VIEW key until a MEGA Live View or MEGA Live Combo View is displayed on the screen.

Pinging from a MEGA Live View (HELIX)



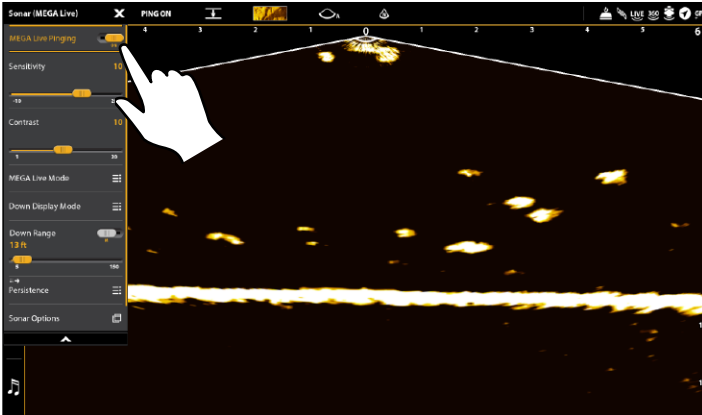


## Start Pinging from the X-Press Menu

### APEX/SOLIX Series

1. With a MEGA Live View or MEGA Live Combo View displayed on-screen, press the MENU key once, or tap Sonar (MEGA Live) on the status bar.
2. Tap MEGA Live Pinging or press the CHECK key.

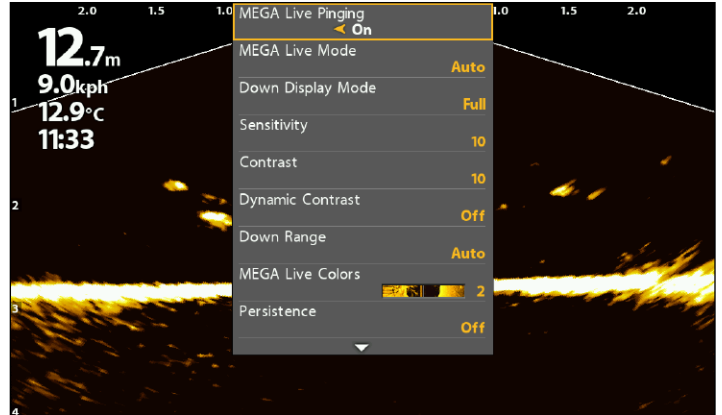
Pinging from an X-Press Menu (APEX)



### HELIX Series

1. With a MEGA Live View or MEGA Live Combo View displayed on the screen, press the MENU key once.
2. Select MEGA Live Pinging, and press the RIGHT Cursor key to select On.

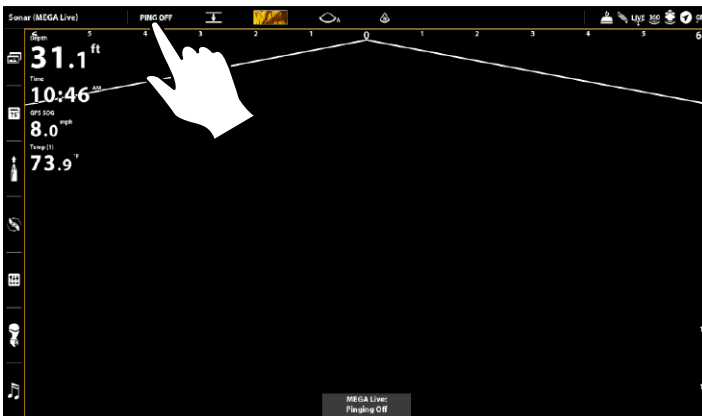
Pinging from an X-Press Menu (HELIX)



## Start Pinging from the Status Bar (APEX and SOLIX only)

1. With a MEGA Live View or MEGA Live Combo View displayed on screen, tap PING OFF on the MEGA Live status bar.

Pinging On/Off from the Status Bar (APEX)



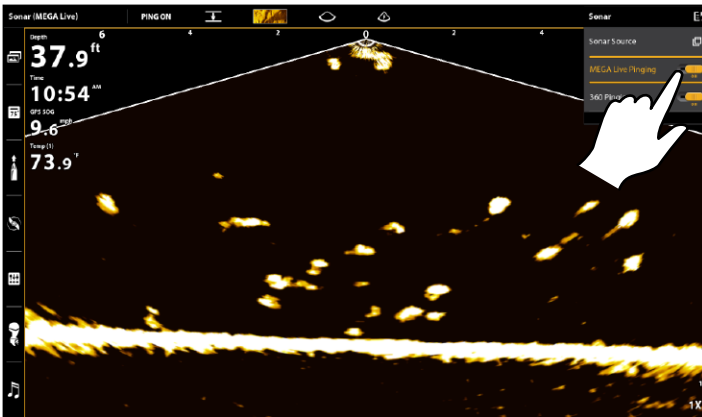
## Start Pinging from the Power Submenu

You can also start pinging from the Power submenu.

### APEX/SOLIX Series

1. Press the POWER key.
2. Tap Sonar.
3. Select MEGA Live Pinging. Tap the On/Off button, or press the ENTER key, to turn it on.

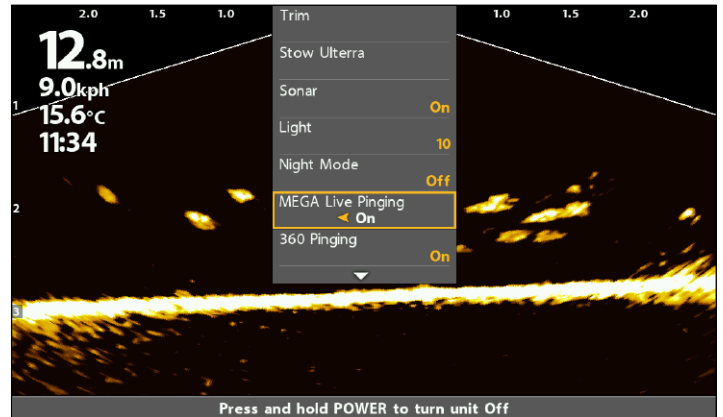
#### Pinging from the Power Submenu (APEX)



### HELIX Series

1. Press the POWER key.
2. Select MEGA Live Pinging, and press the RIGHT Cursor key to select On.

#### Pinging from the Power Submenu (HELIX)



## Stop Pinging

### Stop Pinging from the X-Press Menu

#### APEX/SOLIX Series

1. With a MEGA Live View or MEGA Live Combo View displayed on-screen, press the MENU key once, or tap Sonar [MEGA Live] on the status bar.
2. Select MEGA Live Pinging. Tap the On/Off button, or press the ENTER key, to turn it off.

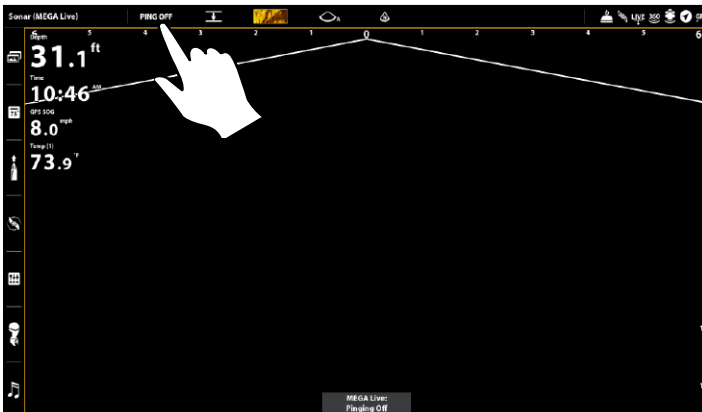
#### HELIX Series

1. With a MEGA Live View or MEGA Live Combo View displayed on the screen, press the MENU key once.
2. Select MEGA Live Pinging, and press the LEFT Cursor key to select Off.

### Stop Pinging from the Status Bar (APEX/SOLIX only)

1. With a MEGA Live View or MEGA Live Combo View displayed on the screen, tap PING ON on the MEGA Live status bar.

#### Pinging On/Off from the Status Bar (APEX)



## Stop Pinging from the Power Submenu

### APEX/SOLIX Series

1. Press the POWER key.
2. Tap Sonar.
3. Select MEGA Live Pinging. Tap the On/Off button, or press the ENTER key, to turn it off.

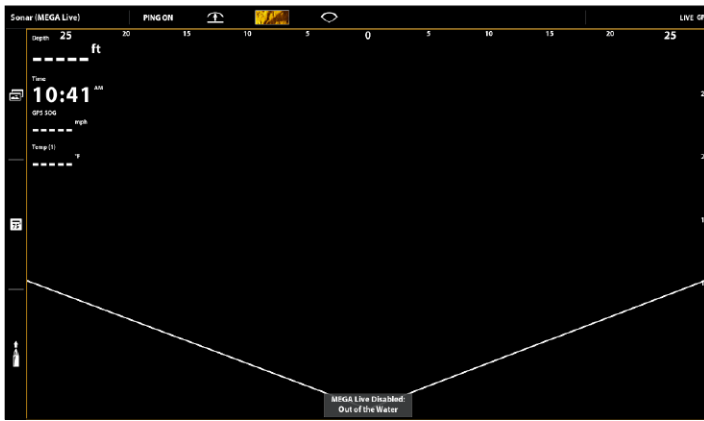
### HELIX Series

1. Press the POWER key.
2. Select MEGA Live Pinging, and press the LEFT Cursor key to select Off.

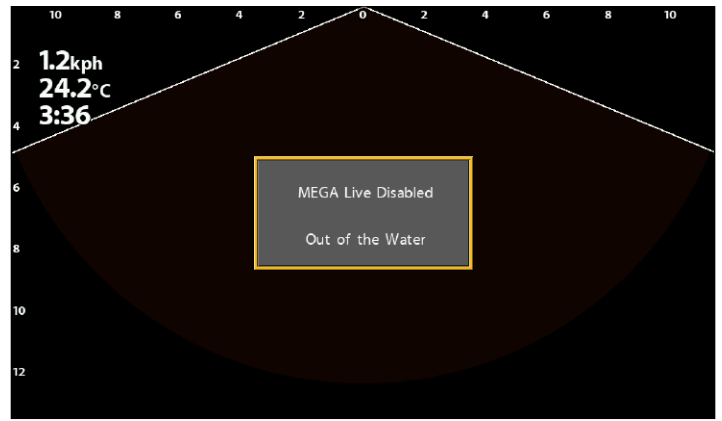
## Wet Switch

The MEGA Live wet switch automatically stops MEGA Live pinging while the transducer is out of the water in order to prevent wear and tear. Your control head will display the following message: MEGA Live Disabled Out of the Water.

**Out of the Water Notification (APEX)**

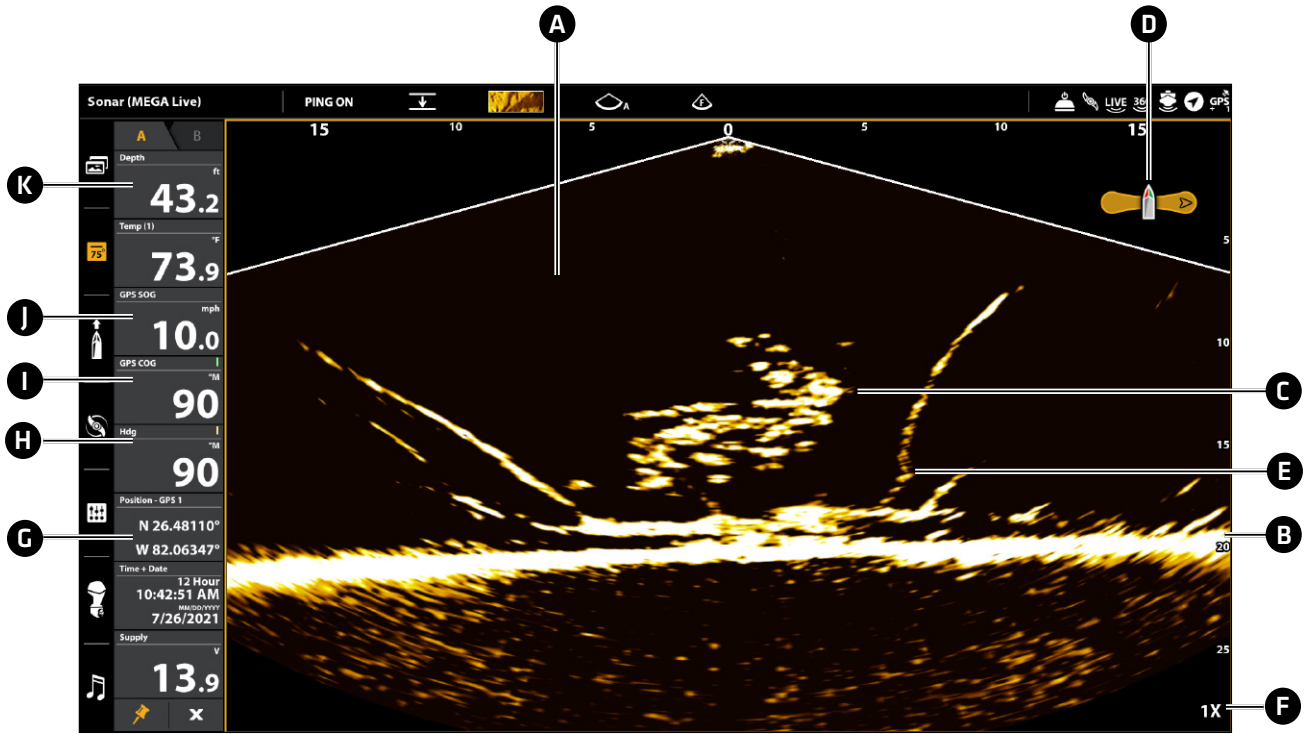


**Out of the Water Notification (HELIX)**



# WHAT'S ON THE MEGA LIVE IMAGING DISPLAY

MEGA Live Imaging uses its unique transducer to provide an unobstructed view of the water in front of, around, and below your boat. The high-definition beams produce the detailed sonar data that you see on the display. MEGA Live Imaging reveals a variety of recognizable features so that you can interpret the structure and bottom contour, and the following items in this illustration.



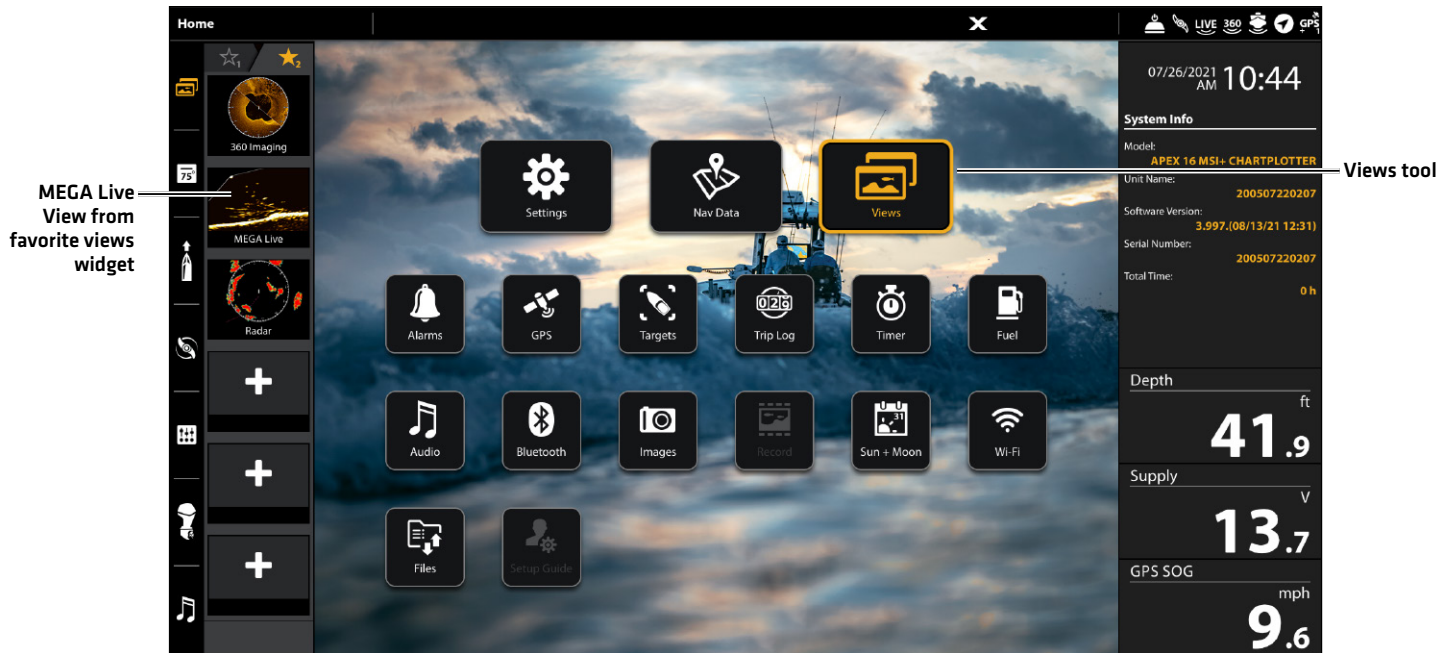
- A Water Column:** Shows the relative depth of the water under the boat at a given time. Variations in the width of the water column show variations in the distance to the bottom as the boat passes over.
- B Bottom Return**
- C Fish**
- D Boat Icon:** The boat icon shows the orientation of the transducer relative to the boat [GPS heading sensor required].
- E Structure:** Cover where fish may be hiding.
- F Zoom Level**
- G Position:** The boat's current latitude/longitude location determined by GPS.
- H Heading:** The boat's heading measured in degrees from North, where 000° is North, 090° is East, 180° is South, and 270° is West [compass/heading sensor required].
- I Course:** The current direction the boat is traveling measured in degrees from North, where 000° is North, 090° is East, 180° is South, and 270° is West [GPS required].
- J Speed:** The measurement of the boat's progress across a given distance [GPS required].
- K Depth:** The depth of the water as provided by another attached transducer [see **Set Up MEGA Live on the Network**].

# MEGA LIVE IMAGING VIEWS

## APEX/SOLIX Series Views

When the MEGA Live Imaging transducer is set up on the control head, the MEGA Live View is added to the Favorite Views widget, and additional combo views are available from the Views tool.

### View Options [APEX]



### Display a View from the Views Tool

The Views tool includes the complete database of available views for your control head. Use the Views tool to create a new view and edit a view.

1. Press the HOME key.
2. Select the Views tool.
3. Select a Group. To see all available views, select All.
4. Tap the View.

**OR**

Use the Joystick to select a view. Press the ENTER key to display it on-screen.

### Display a View from the Favorite Views Widget

1. Tap the views widget icon in the side bar.
2. Tap a view to display.

**OR**

1. Press the Rotary dial.
2. Use the Joystick to select a view to display. Press the ENTER key.

## Create a New View

Follow the instructions below to create a new view from a blank template.

1. Press the HOME key.
2. Select the Views tool.
3. Select New View.
4. See your control head operations manual for more information on how to rename the view, edit the layout, add applications, display digital readouts, and more.

## View Options

The View Options menu provides options to edit the selected view. You can open the View Options menu from the on-screen view or from the Views tool on the Home screen.

1. With a view displayed on-screen, press the MENU key.
2. Select View Options.

**OR**

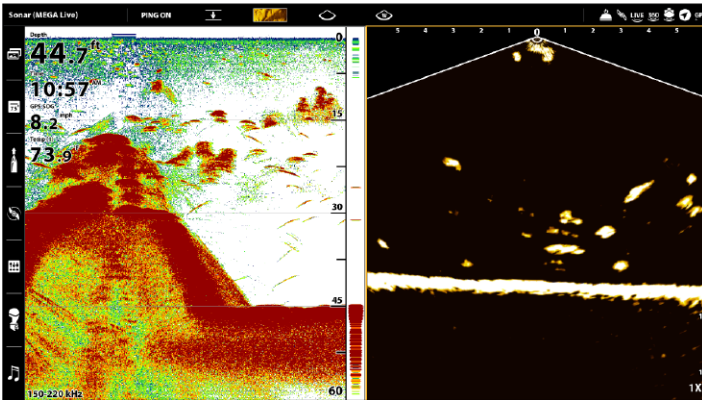
1. Press the HOME key.
2. Select the Views tool.
3. Use the Joystick to select a view. Press the MENU key.

## Split Position Views

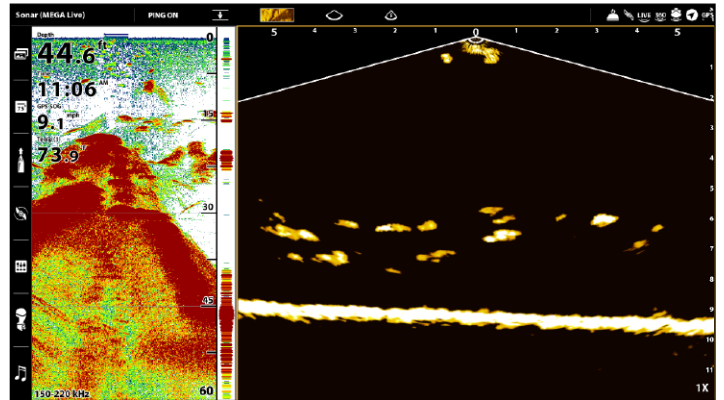
With a MEGA Live Combo View on-screen, the View Options menu gives you the option for each pane to fill 50 percent of the screen, or for one pane to fill 30 percent and the other to fill 70 percent.

1. From the View Options menu, select Split Position.
2. Tap, or use the Joystick and ENTER key, to select an option.

**50/50 Split Position [APEX]**




**30/70 Split Position [APEX]**



## HELIX Series Views

When the MEGA Live Imaging transducer is set up on the control head, the MEGA Live View is added to the View Rotation.

 **NOTE:** The available views will depend on your control head model and the beams you've selected in the Network Source Setup dialog box. See **Set Up MEGA Live on the Network** for details.



**Next View:** Press the VIEW key to advance to the next view in the View Rotation. Press the VIEW key repeatedly until the view you want to use is displayed on the screen.



**Previous View:** Press the EXIT key to see the previous view in the View Rotation. Press the EXIT key repeatedly until the view you want to use is displayed on the screen.




**Save a View:** Press and hold a VIEW PRESET key to save a shortcut to the on-screen view. You can save one view on each VIEW PRESET key. Press the VIEW PRESET key to quickly return to the view at any time.

**Views X-Press Menu:** Press and hold the VIEW key. Use the Cursor Control key to select a view category [Sonar, Chart, System, NMEA 2000, Radar] and a view. The Views X-Press Menu allows you to quickly access a view instead of scrolling through the View Rotation.

## MEGA Live View

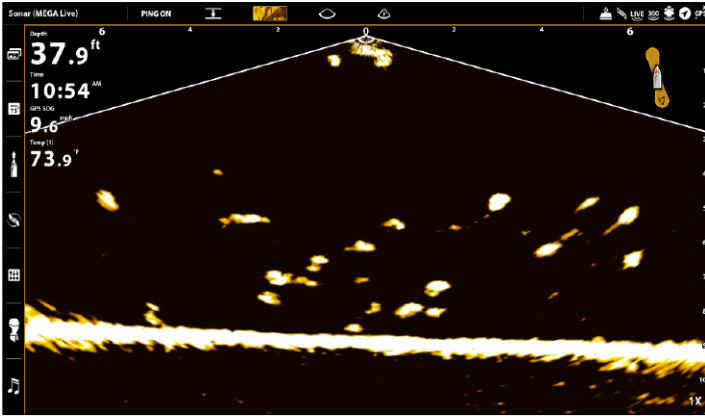
The MEGA Live View allows you to see the MEGA Live Imaging data on the full screen.

<p><b>MEGA Live X-Press Menu</b></p>	<p>The X-Press Menu allows you to start or stop pinging, adjust the beam range, change the color, and customize the display.</p> <p><b>APEX/SOLIX:</b> Tap Sonar [MEGA Live] in the status bar or press the MENU key once.</p> <p><b>HELIX:</b> Press the MENU key once.</p>
<p><b>Cursor and Zoom</b></p>	<p><b>APEX/SOLIX:</b> Use the Joystick to move the cursor over a sonar return. Press the +ZOOM key or pinch and drag with your fingers to magnify the view.</p> <p><b>HELIX:</b> Use the Cursor Control key to display the cursor and move it over a sonar return. Press the +ZOOM key to magnify the View. Press the EXIT key to remove the Cursor.</p> <p>See <b>Zoom In/Out</b> for more information.</p>
<p><b>Mark and Display Waypoints</b></p>	<p>You can mark and display waypoints on the MEGA Live View when your MEGA Live is in Landscape Mode. See <b>Mark and Display Waypoints</b>.</p>
<p><b>Digital Readouts</b></p>	<p>Digital Readout data can be displayed on-screen as an overlay or in data boxes.</p> <p><b>APEX/SOLIX:</b> To change the overlay displayed on the screen, press the MENU key once, or tap Sonar [MEGA Live] in the status bar, and then select View Options &gt; Data Overlays. To change a data bar, press the PANE key once and select the type of data bar to display from the side bar. To keep the data bar displayed on the view, tap the pin icon at the bottom of the data bar. Press and hold a data box to edit it.</p> <p><b>HELIX:</b> To change the readouts that are displayed on the MEGA Live View, select the Main Menu &gt; Setup tab &gt; Select Edit Data Boxes. Use the Cursor Control key to select a data box position and set the information that will be displayed in each digital readout window.</p>

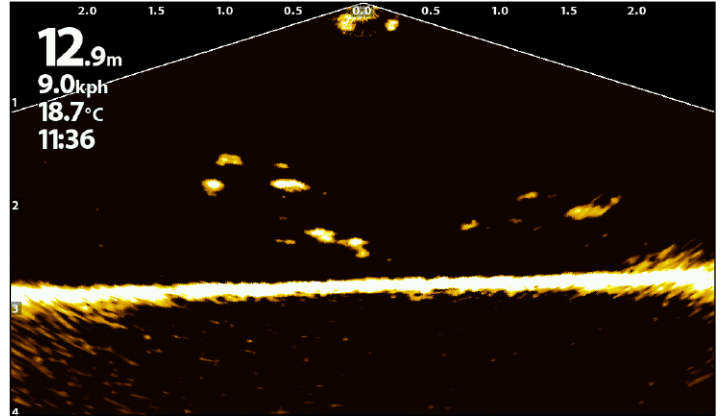
 **NOTE:** Digital readouts may change with the selected view, attached accessories, and whether or not the control head is navigating. See your control head operations manual for details.



**MEGA Live View (APEX)**




**MEGA Live View (HELIX)**

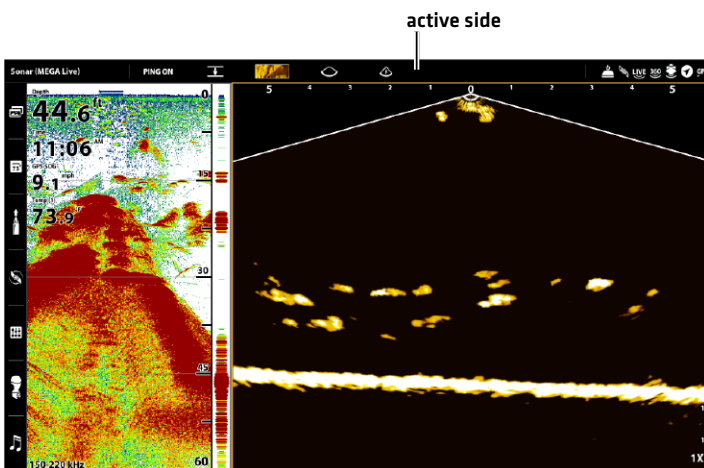


## MEGA Live/2D Sonar Combo View

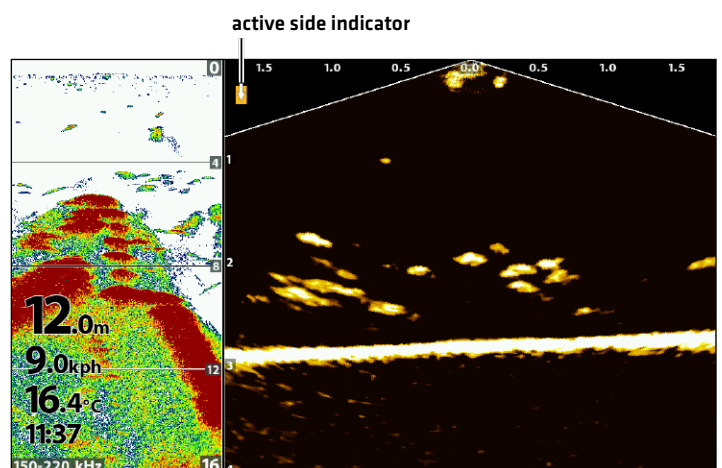
The MEGA Live/2D Sonar Combo View shows sonar information and MEGA Live Imaging information in a combination split screen, where the 2D Sonar View is displayed on the left and the MEGA Live View is displayed on the right.

<p><b>Active Side</b></p>	<p><b>APEX/SOLIX:</b> The selected pane is outlined in yellow. Tap a pane or press the PANE key to select a pane.</p> <p><b>HELIX:</b> The arrow points to the active side. Press the MENU key once and select Active Side from the X-Press Menu. Choose RIGHT or LEFT to set the active side.</p>
<p><b>X-Press Menu</b></p>	<p>After you set the Active Side, press the MENU key once to open the X-Press Menu. The X-Press Menu provides menu options for the active view.</p> <p> <b>NOTE:</b> On APEX and SOLIX, you can also access the X-Press Menu by tapping the menu in the status bar.</p>
<p><b>Sonar</b></p>	<p>Use the 2D traditional Sonar View with the MEGA Live View to maximize your sonar data.</p>

**MEGA Live/Sonar View (APEX)**



**MEGA Live/Sonar View (HELIX)**

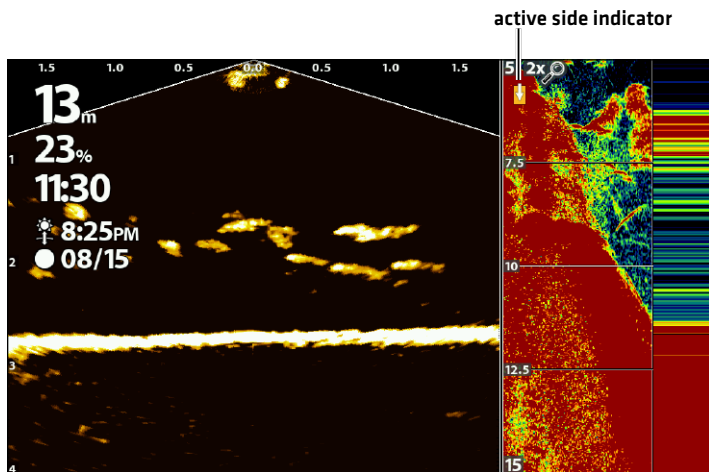


The MEGA Live/2D Zoom Combo View shows sonar information and MEGA Live Imaging information in a combination split screen, where the 2D Sonar View is displayed on the right and the MEGA Live View is displayed on the left.

**NOTE:** If you have a compatible model and want to use it for ice fishing, Ice Fishing Mode must be turned on. See your control head operations guide for more information.

<p><b>Active Side</b></p>	<p>The arrow points to the active side. Press the MENU key once and select Active Side from the X-Press Menu. Choose RIGHT or LEFT to set the active side.</p>
<p><b>X-Press Menu</b></p>	<p>After you set the Active Side, press the MENU key once to open the X-Press Menu. The X-Press Menu provides menu options for the active view.</p>
<p><b>Sonar</b></p>	<p>Use the 2D Zoom Sonar View with the MEGA Live View for a closer look at your 2D sonar data.</p>

**MEGA Live/2D Zoom View (HELIX)**



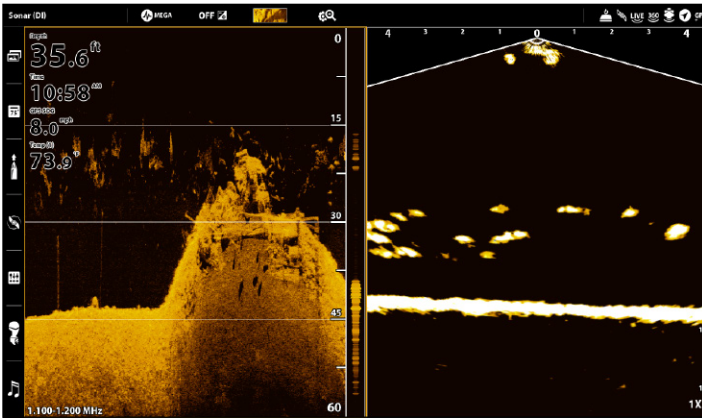
## MEGA Live/Down Imaging Combo View

The MEGA Live/Down Imaging Combo View shows Down Imaging sonar information and MEGA Live Imaging information in a combination split screen, where the Down Imaging View is displayed on the left and the MEGA Live View is displayed on the right.

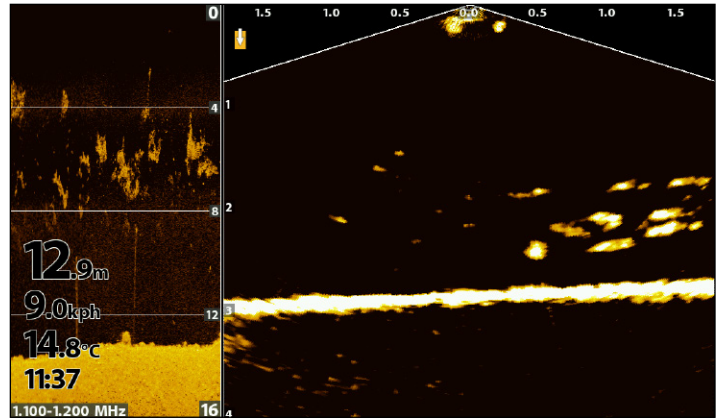
**NOTE:** This view is not available as a default view on APEX and SOLIX models. To create a custom MEGA Live/Down Imaging Combo View on an APEX or SOLIX, see **APEX/SOLIX Series Views: Create a New View**.

<p><b>Active Side</b></p>	<p><b>APEX/SOLIX:</b> The selected pane is outlined in yellow. Tap a pane or press the PANE key to select a pane.</p> <p><b>HELIX:</b> The arrow points to the active side. Press the MENU key once and select Active Side from the X-Press Menu. Choose RIGHT or LEFT to set the active side.</p>
<p><b>X-Press Menu</b></p>	<p>After you set the Active Side, press the MENU key once to open the X-Press Menu. The X-Press Menu provides menu options for the active view.</p> <p><b>NOTE:</b> On APEX and SOLIX, you can also access the X-Press Menu by tapping the menu in the status bar.</p>
<p><b>Sonar</b></p>	<p>Use the Down Imaging Combo View with the MEGA Live View to highlight the bottom contour, structure and fish.</p>

**MEGA Live/Down Imaging View (APEX)**



**MEGA Live/Down Imaging View (HELIX)**



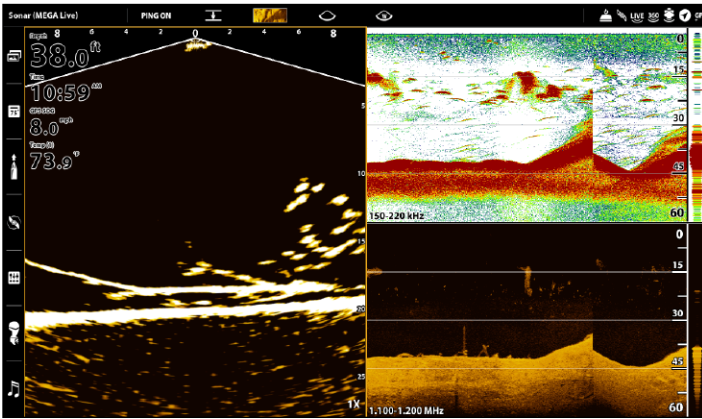
## MEGA Live/2D Sonar/Down Imaging Combo View

The MEGA Live/2D Sonar/Down Imaging Combo View shows sonar information and MEGA Live Imaging information in a combination split screen.

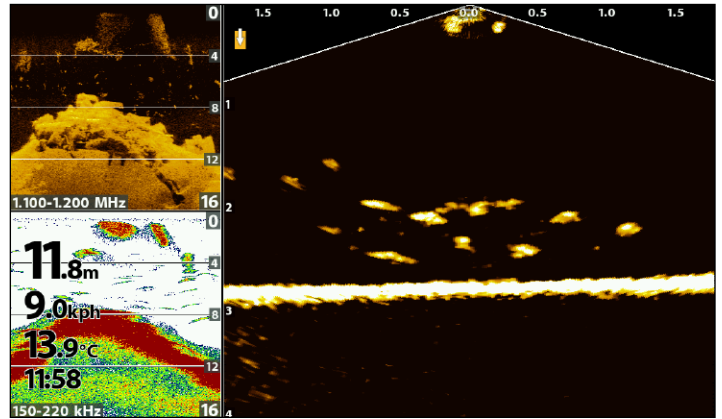
**NOTE:** This view is not available as a default view on APEX and SOLIX models. To create a custom MEGA Live/2D Sonar/Down Imaging Combo View on an APEX or SOLIX, see **APEX/SOLIX Series Views: Create a New View**.

<p><b>Active Side</b></p>	<p><b>APEX/SOLIX:</b> The selected pane is outlined in yellow. Tap a pane or press the PANE key to select a pane.</p> <p><b>HELIX:</b> The arrow points to the active side. Press the MENU key once and select Active Side from the X-Press Menu. Choose RIGHT or LEFT to set the active side.</p>
<p><b>X-Press Menu</b></p>	<p>After you set the Active Side, press the MENU key once to open the X-Press Menu. The X-Press Menu provides menu options for the active view.</p> <p><b>NOTE:</b> On APEX and SOLIX, you can also access the X-Press Menu by tapping the menu in the status bar.</p>
<p><b>Sonar</b></p>	<p>Use the 2D Sonar/Down Imaging Combo View with the MEGA Live View to maximize your sonar data and highlight the bottom contour, structure and fish.</p>

**MEGA Live/2D/DI View (APEX)**




**MEGA Live/2D/DI View (HELIX)**

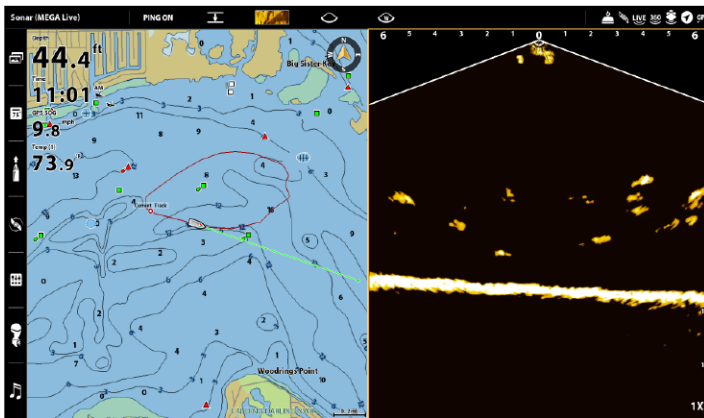


## MEGA Live/Chart Combo View

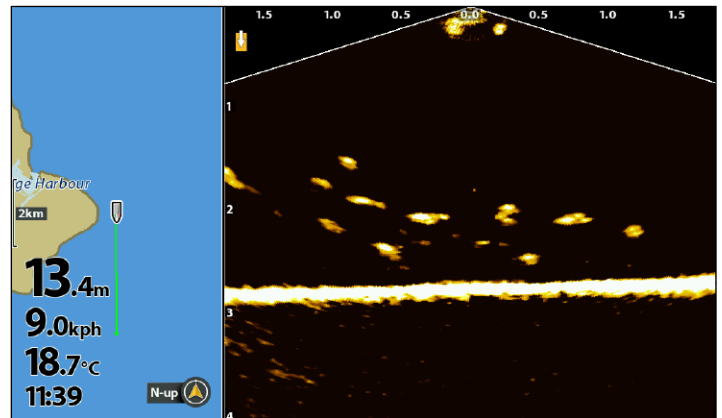
The MEGA Live/Chart Combo View shows chart information and MEGA Live Imaging sonar information in a combination split screen, where the Chart View is displayed on the left and the MEGA Live View is displayed on the right.

<p><b>Active Side</b></p>	<p><b>APEX/SOLIX:</b> The selected pane is outlined in yellow. Tap a pane or press the PANE key to select a pane.</p> <p><b>HELIX:</b> The arrow points to the active side. Press the MENU key once and select Active Side from the X-Press Menu. Choose RIGHT or LEFT to set the active side.</p>
<p><b>X-Press Menu</b></p>	<p>After you set the Active Side, press the MENU key once to open the X-Press Menu. The X-Press Menu provides menu options for the active view.</p> <p> <b>NOTE:</b> On APEX and SOLIX, you can also access the X-Press Menu by tapping the menu in the status bar.</p>
<p><b>Navigation</b></p>	<p>Use the Chart View with the MEGA Live View to determine the position of structure and fish. To mark waypoints on the MEGA Live View, see <i>Mark and Display Waypoints</i>.</p>

**MEGA Live/Chart View (APEX)**



**MEGA Live/Chart View (HELIX)**

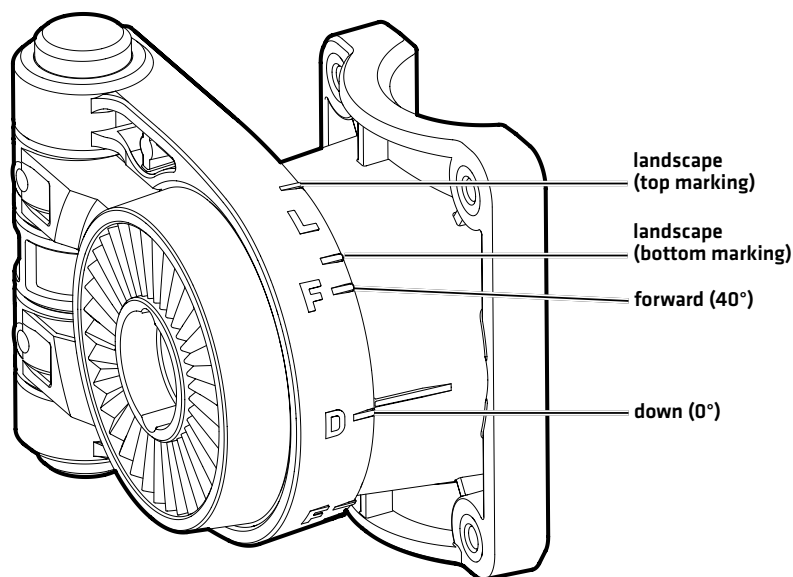


# CHANGE THE MEGA LIVE MODE

## Understanding the MEGA Live Modes

When you change the MEGA Live Mode, you are changing the angle of your transducer. In Down Mode, your transducer is at 0°. As you rotate the mount by hand [see your *MEGA Live Imaging Installation Guide* for more information], each “click” upwards raises your transducer angle by 10°, up to a maximum of 60°. In Landscape Mode, use higher angles [top marking] for shallow water and lower angles [bottom marking] for deeper water.

### MEGA Live Mode Guides



## Change the MEGA Live Mode

Your control head will automatically select the best mode for your installation. Use the following instructions to manually change the MEGA Live Mode to Down, Forward, or Landscape.

### Change the MEGA Live Mode from a MEGA Live View

#### APEX/SOLIX Series


1. With a MEGA Live View or MEGA Live Combo View displayed on-screen, press the MENU key once, or tap Sonar [MEGA Live] on the status bar.
2. Select MEGA Live Mode.
3. Select Auto. Tap the on/off button, or press the ENTER key, to turn Auto off.
4. Select a MEGA Live mode. Tap, or press the enter key, to enable it.

When you manually change the MEGA Live Mode, a dialog box will display reminding you to also change the transducer's installation orientation. For instructions on changing the installation orientation, see your *MEGA Live Imaging Installation Guide* or visit our Web site at [humminbird.com](http://humminbird.com).

#### HELIX Series

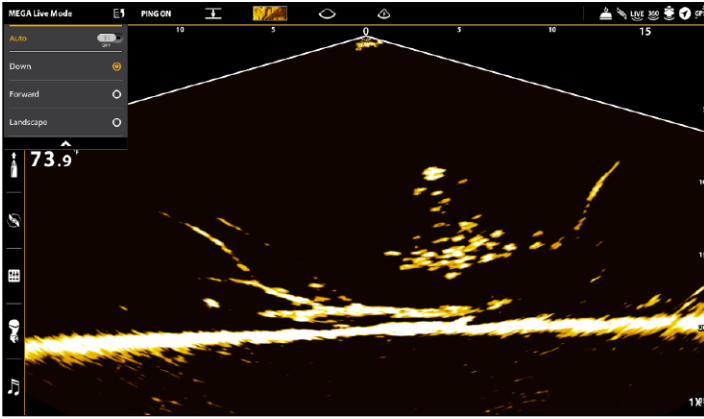
1. **X-Press Menu:** With a MEGA Live Imaging View displayed on-screen, press the MENU key once.
2. Select MEGA Live Mode.
3. Press the RIGHT or LEFT Cursor Keys to select a mode.
4. **Close:** Press the EXIT key.

When you manually change the MEGA Live Mode, a dialog box will display reminding you to also change the transducer's installation orientation. For instructions on changing the installation orientation, see your *MEGA Live Imaging Installation Guide* or visit our Web site at [humminbird.com](http://humminbird.com).

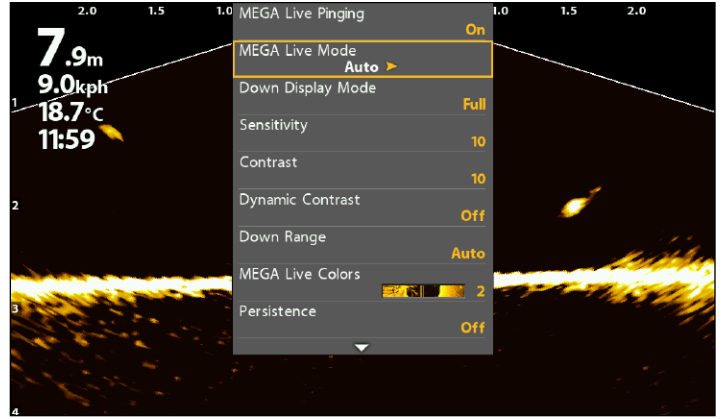
 **QUICK TIP!** You can also change this setting by tapping the MEGA Live Mode icon in the status bar.



### Selecting a MEGA Live Mode [APEX]



### Selecting a MEGA Live Mode [HELIX]

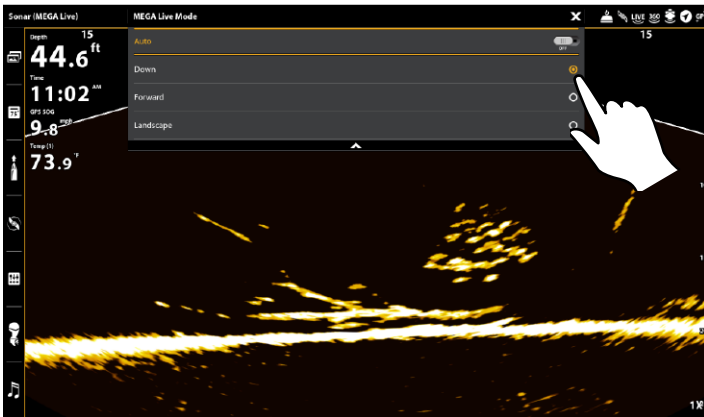


### Change the MEGA Live Mode from the Status Bar (APEX and SOLIX only)

1. With a MEGA Live View or MEGA Live Combo View displayed on screen, tap the MEGA Live Mode icon in the status bar.
2. Select Auto. Tap the on/off button, or press the ENTER key, to turn Auto off.
3. Select a MEGA Live mode. Tap, or press the enter key, to enable it.

When you manually change the MEGA Live Mode, a dialog box will display reminding you to also change the transducer's installation orientation. For instructions on changing the installation orientation, see your *MEGA Live Imaging Installation Guide* or visit our Web site at [humminbird.com](http://humminbird.com).

### Pinging On/Off from the Status Bar [APEX]



## Set the Display Mode

When using your transducer in Down or Forward Mode, you can set the width of the data displayed in Down Mode or select the angle used for Forward mode.

### APEX/SOLIX Series

1. With a MEGA Live View or MEGA Live Combo View displayed on-screen, press the MENU key once, or tap Sonar (MEGA Live) on the status bar.
2. Select Down Display Mode or Forward Display Mode. Tap, or use the Joystick and ENTER key, to select a setting.

### HELIX Series

1. With a MEGA Live View or MEGA Live Combo View displayed on the screen, press the MENU key once.
2. Select Down Display Mode or Forward Display Mode. Press the RIGHT or LEFT Cursor key to adjust the setting.

<b>Down Display Mode</b>	<b>Narrow:</b> Select Narrow to see only the data directly under the transducer. <b>Full:</b> Select Full to reveal more information than Narrow. <b>Wide:</b> Select Wide to display the maximum information available from the MEGA Live beam width.
<b>Forward Display Mode</b>	Select the angle of your transducer (see <i>Understanding the MEGA Live Modes</i> for more information), or select Auto for your control head to select the best angle for you.

# CHANGE THE MEGA LIVE VIEW DISPLAY SETTINGS

Use the following instructions to change how the MEGA Live View is displayed.

Some of the menu options in this section may be displayed in other parts of the menu system so that you can access them quickly. No matter where you make the change, the control head will update the setting across the system.

## Change the View Color


### Change the Color Palette


The MEGA Live Imaging X-Press Menu allows you to quickly change the display palette while you fish.

 **NOTE:** The palette you choose will be applied to all Mega Live Views in the View database.

#### APEX/SOLIX Series

1. **X-Press Menu:** With a MEGA Live View or MEGA Live Combo View displayed on-screen, press the MENU key once, or tap Sonar (MEGA Live) on the status bar.
2. Select Sonar Options > Preferences > MEGA Live Colors.
3. Tap a sonar color palette, or use the Joystick to select a palette.
4. **Close:** Tap the X icon.

 **QUICK TIP!** You can also change this setting by tapping the color palette icon in the status bar.

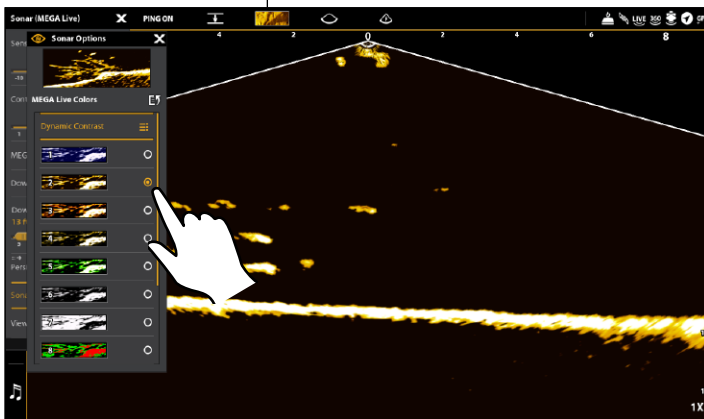
 **NOTE:** When Global is turned on in the Sonar Options menu, the selected menu setting on the control head is shared with other control heads in the network.

#### HELIX Series

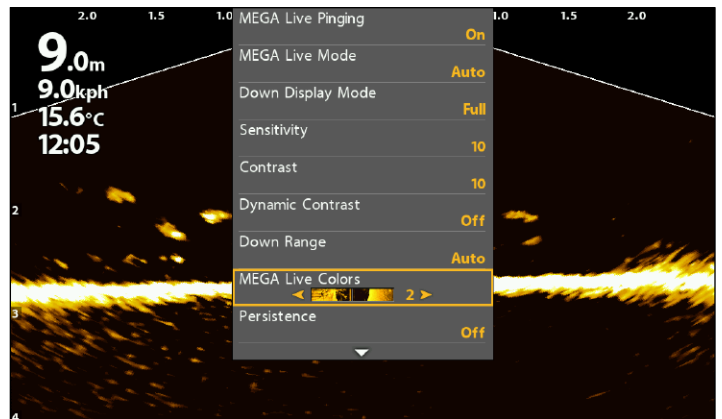
1. **X-Press Menu:** With a MEGA Live Imaging View displayed on-screen, press the MENU key once.
2. Select MEGA Live Colors.
3. Press the RIGHT or LEFT Cursor Keys to select a palette.
4. **Close:** Press the EXIT key.

#### Adjusting the Color (APEX)

color palette



#### Adjusting the Color (HELIX)



## Turn On/Off Dynamic Contrast

Dynamic Contrast automatically enhances the contrast of the selected color palette.

### APEX/SOLIX Series

1. **X-Press Menu:** With a MEGA Live View or MEGA Live Combo View displayed on-screen, press the MENU key once, or tap Sonar [MEGA Live] on the status bar.
2. Select Sonar Options > Preferences > MEGA Live Colors.
3. Select Dynamic Contrast.
4. Tap, or use the Joystick and enter key, to select an option.
5. **Close:** Tap the X icon.



**QUICK TIP!** You can also change this setting by tapping the color palette icon in the status bar.



**NOTE:** When Global is turned on in the Sonar Options menu, the selected menu setting on the control head is shared with other control heads in the network.

### HELIX Series



1. **X-Press Menu:** With a MEGA Live Imaging View displayed on-screen, press the MENU key once.
2. Select Dynamic Contrast.
3. Press the RIGHT or LEFT Cursor Keys to select an option.
4. **Close:** Press the EXIT key.

## Adjust Sensitivity, Contrast and Range

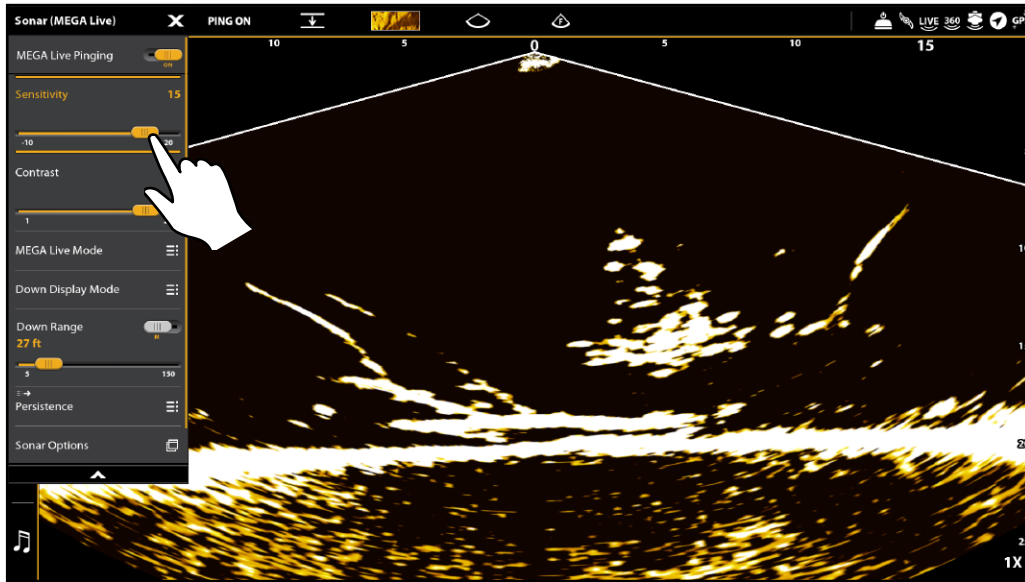
### APEX/SOLIX Series

The X-Press Menu provides menu options to adjust the sensitivity, contrast and range as you fish.

1. With a MEGA Live View displayed on-screen, tap Sonar [MEGA Live] in the status bar, or press the MENU key once.
2. Select Sensitivity, Contrast, or Range.
3. Press and hold the slider, or turn the Rotary dial, to adjust the setting.

<b>Sensitivity</b>	Sensitivity controls how much detail is shown on the display and will adjust the sensitivity of all sonar frequencies. Decrease the sensitivity to eliminate the clutter from the display that is sometimes present in murky or muddy water. When operating in very clear water or greater depths, increase the sensitivity to see weaker returns that may be of interest.
<b>Contrast</b>	Adjust the Contrast setting to accent the light and dark parts of the MEGA Live Imaging data to provide greater definition. <b>When Dynamic Contrast is turned on,</b> the contrast will be automatically adjusted.
<b>Range</b>	Range controls how far the MEGA Live Imaging beams will ping. Select a low range number to focus on a shorter distance and see greater detail on the screen. Select a higher range number to see farther and see an overview of details on the screen.  <b>QUICK TIP!</b> You can also change this setting by tapping the Range icon in the status bar or by using the ZOOM In and ZOOM Out keys.  <b>NOTE:</b> Your MEGA Live Mode [Down, Forward, Landscape] determines the Range options available in the X-Press Menu.

## MEGA Live Contrast and Sensitivity (APEX)



**NOTE:** The Sensitivity and Contrast are set high in the above illustration. The high Sensitivity setting displays more weak returns on the display, and the high Contrast setting shows more definition between the light and dark returns.

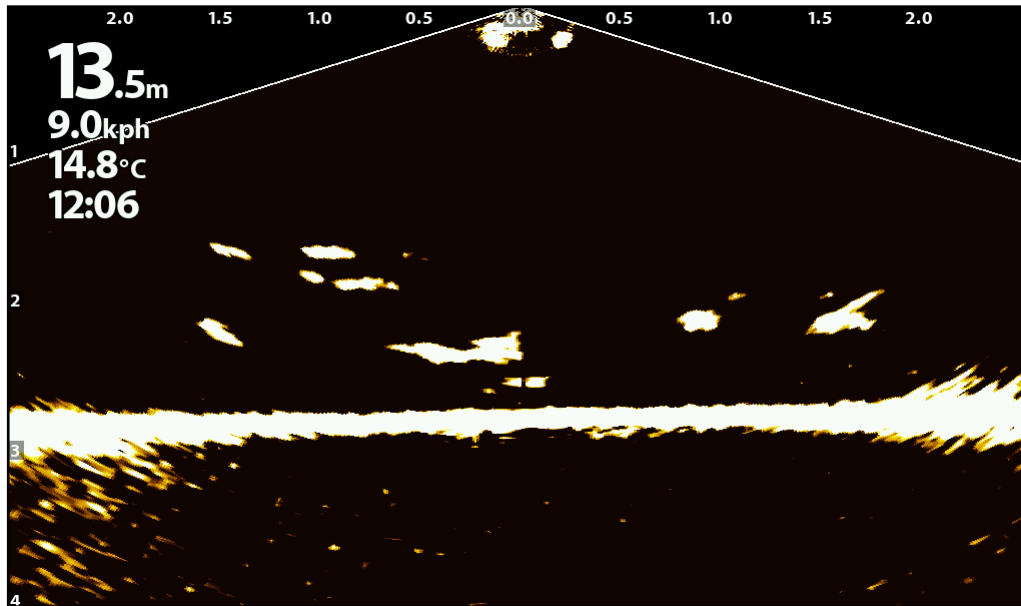
### HELIX Series


The X-Press Menu provides menu options to adjust the sensitivity, contrast and range as you fish. The display will update as you adjust each category.

1. **X-Press Menu:** With a MEGA Live View or a Combo View displayed on the screen, press the MENU key once.
2. Use the Cursor Control key to select and adjust the following settings:

<p><b>Sensitivity</b></p>	<p>Controls how much detail is shown on the display. When operating in very clear water or greater depths, increase the sensitivity to show weaker returns that may be of interest. Decrease the sensitivity to eliminate the clutter from the display that is sometimes present in murky or muddy water.</p>
<p><b>Contrast</b></p>	<p>Accents the light and dark parts of the MEGA Live Imaging data to provide greater definition.</p> <p><b>When Dynamic Contrast is turned on,</b> the contrast will be automatically adjusted.</p>
<p><b>Range</b></p>	<p>Range controls how far the MEGA Live Imaging beams will ping. Select a low range number to focus on a shorter distance and see greater detail on the screen. Select a higher range number to see farther and see an overview of details on the screen.</p> <p><b>NOTE:</b> Your MEGA Live Mode [Down, Forward, Landscape] determines the Range options available in the X-Press Menu.</p>

## MEGA Live Contrast and Sensitivity (HELIX)




 **NOTE:** The Sensitivity and Contrast are set high in the above illustration. The high Sensitivity setting displays more weak returns on the display, and the high Contrast setting shows more definition between the light and dark returns.

### Turn On/Off Persistence

When Persistence is turned on, your sonar returns will include a history of where moving objects have been, shown as a “trail” of movement. Set Persistence to low for a shorter trail or to High for a longer trail.

#### APEX/SOLIX Series

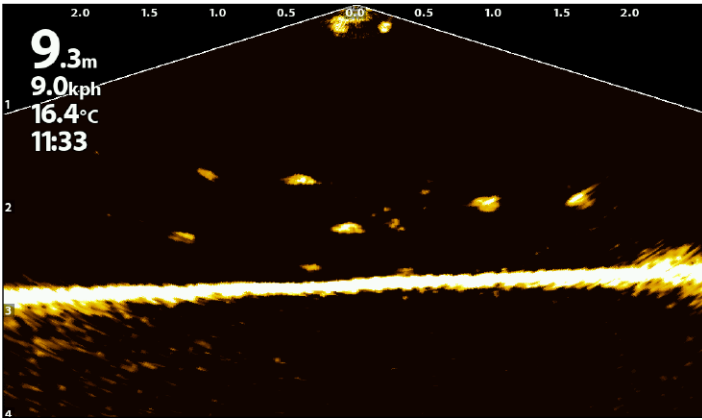
1. **X-Press Menu:** With the MEGA Live View displayed on-screen, press the MENU key once, or tap Sonar (MEGA Live) on the status bar.
2. Select Sonar Options > Preferences > Persistence.
3. Select Persistence. Tap the On/Off button, or press the ENTER key, to turn it on/off.
4. Tap, or use the Joystick and ENTER key, to select a Persistence level [Low, Medium or High].
5. **Close:** Tap the X icon.

 **NOTE:** When Global is turned on in the Sonar Options menu, the selected menu setting on the control head is shared with other control heads in the network.

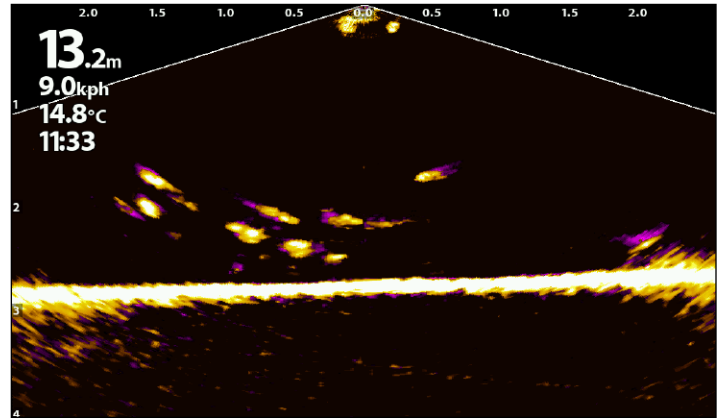
#### HELIX Series

1. **X-Press Menu:** With a MEGA Live Imaging View displayed on-screen, press the MENU key once.
2. Select Persistence.
3. Press the RIGHT or LEFT Cursor Keys to turn it on/off and to select a Persistence level [Low, Medium or High].
4. **Close:** Press the EXIT key.

Persistence OFF (HELIX)



Persistence ON (Low) (HELIX)



## Turn On/Off Interference Rejection

If interference appears on the sonar views from sources such as other networked sonar devices, use Interference Rejection to limit the interference.

### APEX/SOLIX Series

1. Press the HOME key.
2. Select Settings.
3. Select CHIRP Sonar.
4. Under MEGA Live, select Interference Rejection. Tap the on/off button, or press the ENTER key, to turn it on/off.
5. Press and hold the slider, or press and hold the ENTER key, to adjust the setting, where 1 is the lowest filter and 3 filters the most interference.

### HELIX Series

1. **Main Menu:** Press the MENU key twice.
2. Select the Accessories tab > MEGA Live > Interference Rejection.
3. Use the RIGHT or Left Cursor keys to select a filter setting, where Low is the lowest filter and High filters the most interference.  
**Off:** removes all filtering.

## Turn On/Off Overlays

### APEX/SOLIX Series

Use the Overlays submenu to display or hide information on the view. In the MEGA Live View, you can display the following: boat icon, range intervals, min/max range, range grid, zoom label, waypoints, and cursor data.

1. **X-Press Menu:** With the MEGA Live View displayed on-screen, press the MENU key once, or tap Sonar [MEGA Live] on the status bar.
2. Select Sonar Options > Overlays.
3. Tap the menu, or use the Joystick to select an item, and add a check mark [check mark = visible, blank = hidden].
4. **Close:** Tap the X icon.

## HELIX Series

Use the MEGA Live Menu and the X-Press Menu to display or hide information on the view. In the MEGA Live View, you can display the following: boat icon, waypoints, and range grid.

1. **Main Menu:** Press the MENU key twice.
2. Select the Accessories tab > MEGA Live.
3. Use the Cursor Control key to select an option from the submenu, and press the RIGHT or LEFT Cursor keys to change the menu setting, as follows:

<b>Boat Icon</b>	Select On to display the boat icon, or select Off to hide the boat icon.
<b>Overlay Waypoints</b>	Select On to display waypoint overlays on the view, or select Off to hide them.

4. **X-Press Menu:** With a MEGA Live Imaging View displayed on-screen, press the MENU key once.
5. Select Range Grid. Press the RIGHT or LEFT Cursor Key to turn it on/off.

<b>Range Grid</b>	Select On to display a grid over your sonar returns, or select Off to hide the grid.
-------------------	--



# Zoom In/Out

The ZOOM keys allow you to zoom in and out of a selected area based on the cursor position.

## Activate the Cursor

### SOLIX Series

1. Tap a position on the MEGA Live View.

OR

Move the Joystick.

### HELIX Series

1. Use the Cursor Control key to move the cursor to a position on the MEGA Live View.
2. **Close:** Press the EXIT key to remove the Cursor.

## Zoom In/Out

### SOLIX Series

1. **Zoom In:** Tap the position twice [double tap].
2. **Zoom Out:** Tap the screen with two fingers once [single tap].

OR

1. **Zoom In:** Touch the screen with two fingers and move them apart [pinch out].
2. **Zoom Out:** Touch the screen with two fingers and move them together [pinch in].

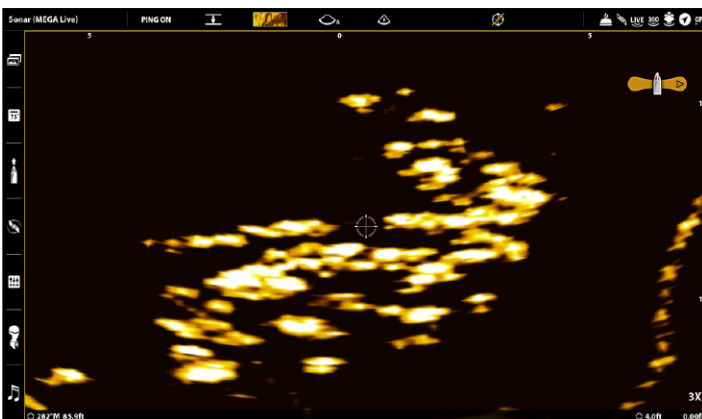
OR

1. **Zoom In:** Press the +ZOOM key.
2. **Zoom Out:** Press the - ZOOM key.

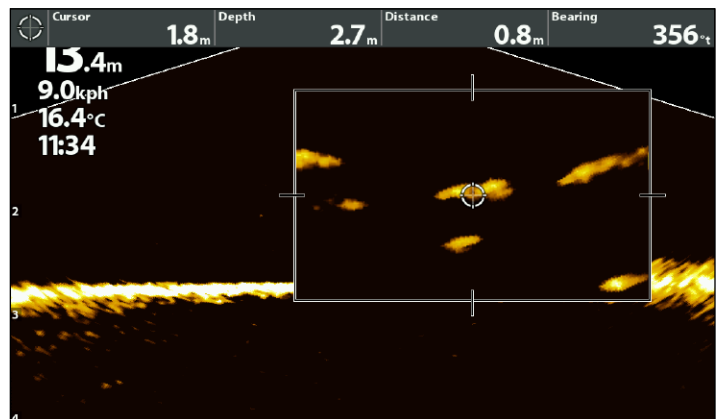
### HELIX Series

1. **Zoom In:** Press the +ZOOM key.
2. **Zoom Out:** Press the -Zoom key.

**Zooming In (APEX)**




**Zooming In (HELIX)**



# MARK AND DISPLAY WAYPOINTS

You can mark a waypoint directly on your Humminbird screen.

 **NOTE:** Waypoints can be marked in any mode, but they can only be displayed in Landscape Mode.

You can use the following navigation functions in a MEGA Live View:

- Display Waypoints as they are marked on the view. Waypoints can be marked at the boat position or cursor position.
- In a MEGA Live/Chart Combo View, you can see where your boat is positioned in relation to a waypoint on the Chart View and in relation to underwater structure in the MEGA Live View [see *MEGA Live Imaging Views* for more information].

## Mark a Waypoint

You can mark a waypoint at the boat position or the cursor position.

### Mark a Waypoint at the Boat Position

#### APEX/SOLIX Series

1. Tap Sonar (MEGA Live) in the status bar.
2. Select Mark.
3. Select Waypoint.

**OR**

1. Press the Mark key twice.

#### HELIX Series

1. Press the MARK key.

### Mark a Waypoint at the Cursor Position

#### APEX/SOLIX Series

1. Press and hold a position on the MEGA Live View.
2. Select Waypoint.

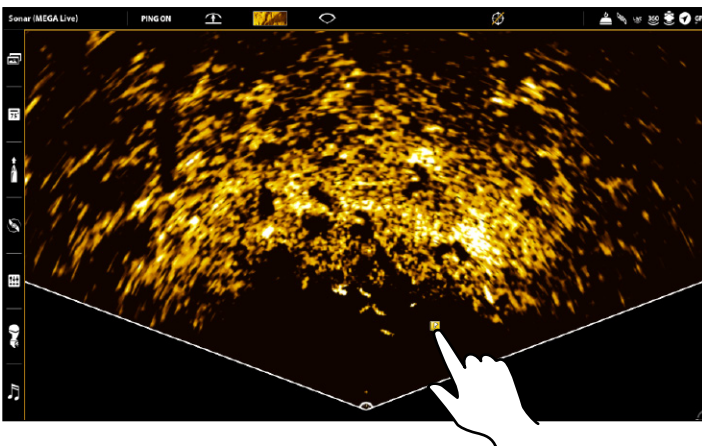
**OR**

1. Use the Joystick to move the cursor to a position on the MEGA Live View.
2. Press the MARK key twice.

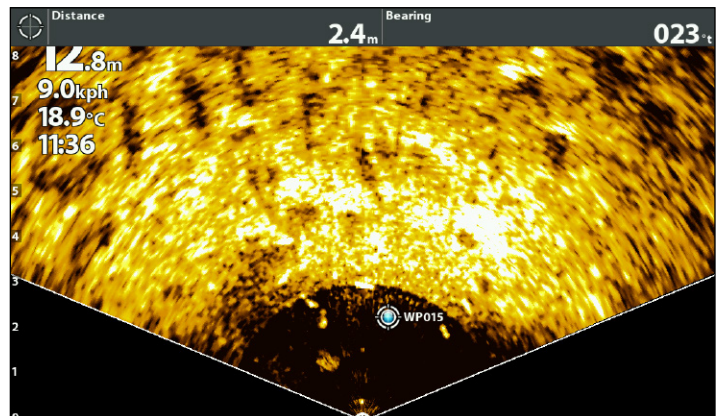
#### HELIX Series

1. Use the Cursor Control key to move the cursor to a position on the MEGA Live View.
2. Press the MARK key twice.


**Marking a Waypoint - Cursor Position (APEX)**



**Marking a Waypoint - Cursor Position (HELIX)**




The Recording feature records active sonar information.

 **NOTE:** A microSD or SD card must be installed in the control head to use the Recording features.

## Start Recording

### APEX/SOLIX Series

1. Press the HOME key.
2. Select the Record tool.
3. Under Record Sonar, set up the sonar recording:  
Select Recording Sources, and select the beams to be recorded.  
Select Save Location, and select an installed SD card.
4. Select Start Recording.

 **NOTE:** Other sonar sources cannot be recorded at the same time as MEGA Live.

### HELIX Series

1. **X-Press Menu:** With a MEGA Live Imaging View displayed on-screen, press the MENU key once.
2. Select Record MEGA Live. Press the RIGHT Cursor key.
3. Select MEGA Live Recording Start. Press the RIGHT Cursor key to begin recording.

## Stop Recording

### APEX/SOLIX Series

1. Press the HOME key.
2. Select the Record tool.
3. Under Record Sonar, select Stop Recording.

### HELIX Series

1. **X-Press Menu:** With a MEGA Live Imaging View displayed on-screen, press the MENU key once.
2. Select Record MEGA Live. Press the RIGHT Cursor key.
3. Select MEGA Live Recording Stop. Press the RIGHT Cursor key to stop recording.

## Play a Recording

### APEX/SOLIX Series

1. Press the HOME key.
2. Select the Record tool.
3. Tap the recording name, or use the Joystick to select it.
4. Select Start.

### HELIX Series

1. **X-Press Menu:** With a MEGA Live Imaging View displayed on-screen, press the MENU key once.
2. Select Record MEGA Live. Press the RIGHT Cursor key.
3. Select MEGA Live Playback Select. Press the RIGHT Cursor key to select a recording to play.
4. Select MEGA Live Playback Start to begin playback.

## Stop Playback

### APEX/SOLIX Series

1. Tap the view name in the status bar or press the MENU key.
2. Select Sonar Playback.
3. Select Stop.

### HELIX Series

1. **X-Press Menu:** With a MEGA Live Imaging View displayed on-screen, press the MENU key once.
2. Select Record MEGA Live. Press the RIGHT Cursor key.
3. Select MEGA Live Playback Stop. Press the RIGHT Cursor key.

## Delete a Recording

### APEX/SOLIX Series

1. Press the HOME key.
2. Select the Record tool.
3. Press and hold the recording name.
4. Select Delete.

### HELIX Series

1. **X-Press Menu:** With a MEGA Live Imaging View displayed on-screen, press the MENU key once.
2. Select Record MEGA Live. Press the RIGHT Cursor key.
3. Select MEGA Live Playback Select. Press the RIGHT Cursor key to select a recording to delete.
4. Select MEGA Live Recording Delete. Press the RIGHT Cursor key.

# POWER OFF

---

## 1. Power Off the Control Head

Press and hold the POWER key.



**WARNING!** Turning off the control head will NOT power off the MEGA Live Imaging transducer.

## 2. Power Off the Transducer

Turn off power on the main switch, breaker, or battery switch.



**NOTE:** Powering off the MEGA Live Imaging transducer will be determined by the installation and power connection on your boat.

## 3. Check the MEGA Live Trolling Motor Mount

Check the tension of the trolling motor bracket after initial use and periodically thereafter to ensure that the installation remains stable. See your installation guide for details.

# CONTACT HUMMINBIRD

---

Contact Humminbird Technical Support in any of the following ways:

**Web site:**

[humminbird.com](http://humminbird.com)

**E-mail:**

[service@humminbird.com](mailto:service@humminbird.com)

**Telephone:**

1-800-633-1468

**Direct Shipping:**

Humminbird  
Service Department  
678 Humminbird Lane  
Eufaula, AL 36027 USA

**Hours of Operation:**

Monday - Friday

8:00 a.m. to 4:30 p.m. [Central Standard Time]

**Social Media Resources:**



[Facebook.com/HumminbirdElectronics](https://www.facebook.com/HumminbirdElectronics)



[Twitter.com \[@humminbirdfish\]](https://twitter.com/humminbirdfish)



[Instagram.com/humminbirdfishing](https://www.instagram.com/humminbirdfishing)



[YouTube.com/humminbirdtv](https://www.youtube.com/humminbirdtv)

