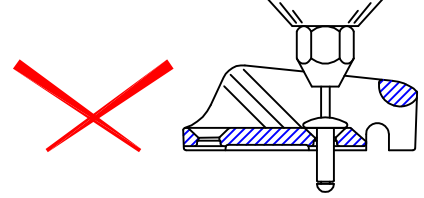
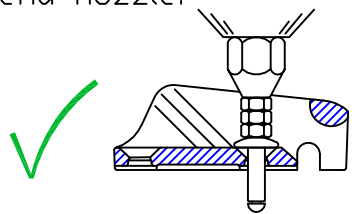


Notes: -  
 For marine applications, use a silicone sealant or a bedding compound to avoid electrolytic action between the cleat and metal fastenings.

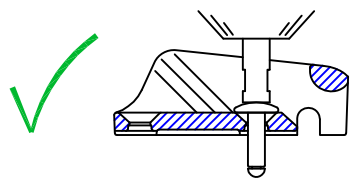
Standard rivet gun nozzles do not fit inside cleat.



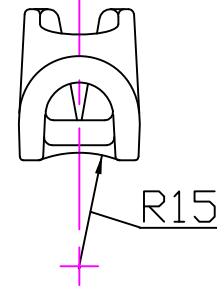
Use 2 or 3 nuts to extend nozzle.



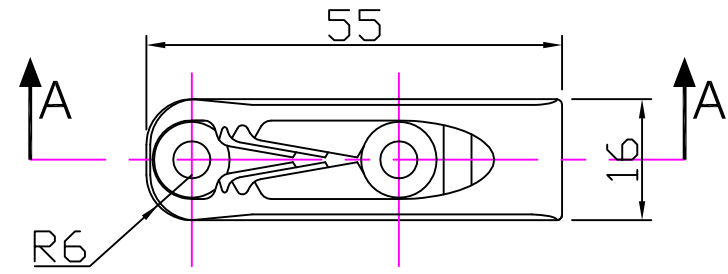
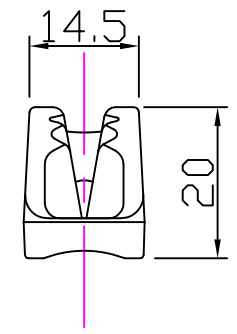
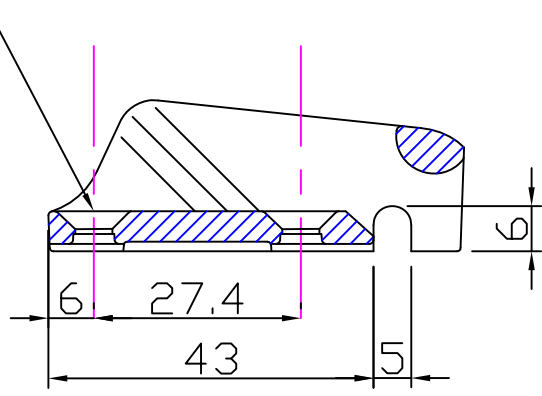
Extended nozzle is best. Consult rivet gun supplier.



2 Holes  $\phi 4.9$   
 countersunk  $\phi 10.0 \times 90^\circ$



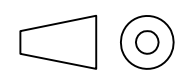
Section 'AA'



**Clamcleat®**  
 Rope cleats

Clamcleats Limited  
 Watchmead  
 Welwyn Garden City  
 Hertfordshire AL7 1AP  
 England

Telephone +44 (0)1707 330101  
 Fax +44 (0)1707 321269  
 Email sales@clamcleat.com  
 www.clamcleat.com



Scale 1:1  
 All dimensions in mm.

Issue: 6 April 2010  
 ID211-Mk2s2.dwg

Material:  
 Diecast Aluminium

Installation Drawing for: -  
**CL211 Mk2/S2**  
 Mk2 Racing Junior  
 with Becket