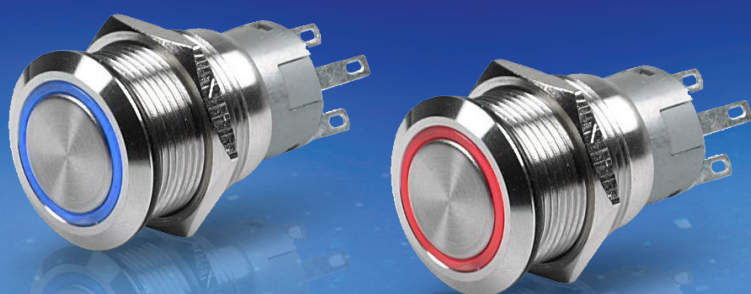


New! Stainless Steel LED Switches



Attractive stainless steel switches featuring an attractive ring of LED light.

Manufactured from 304 stainless steel, these through panel mount switches are IP67 rated when installed and ideal for switching lighting or installing into custom switch panels.

The light rings may be wired to show power to a system or signal circuit activation.

The range also includes matching stainless steel warning buzzers with LED light rings.



Stainless Steel Push Button Switches with LED Ring - Latching

Light Colour	Voltage	Operation	Part Number
Red	12V DC	On / Off	8HG 958 455-001
Blue	12V DC	On / Off	8HG 958 455-011
Red	24V DC	On / Off	8HG 958 455-101
Blue	24V DC	On / Off	8HG 958 455-111

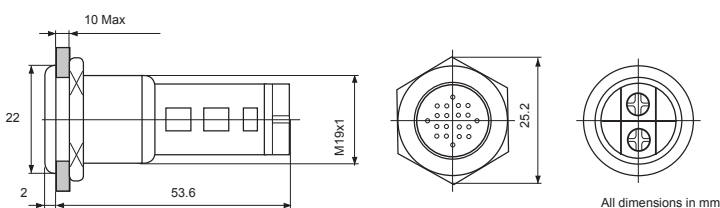
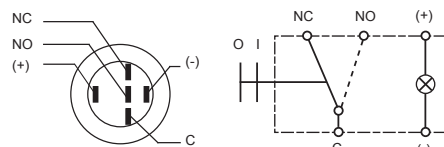
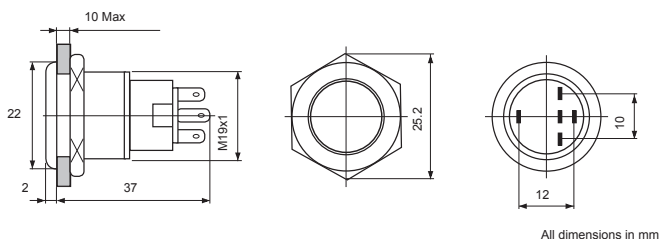
Stainless Steel Push Button Switches with LED Ring - Momentary

Light Colour	Voltage	Operation	Part Number
Red	12V DC	Momentary	8HG 958 455-201
Blue	12V DC	Momentary	8HG 958 455-211
Red	24V DC	Momentary	8HG 958 455-301
Blue	24V DC	Momentary	8HG 958 455-311

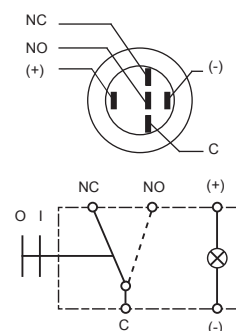
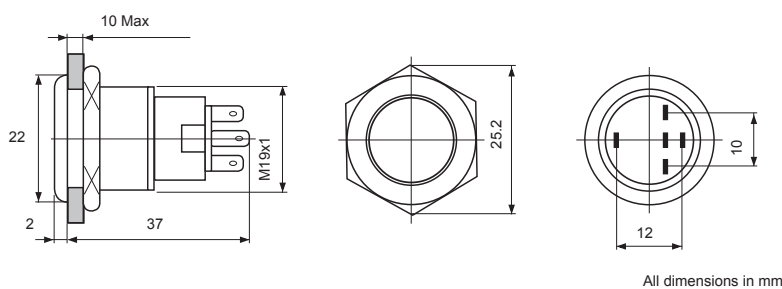
Stainless Steel Buzzers with LED Ring

Light Colour	Voltage	Operation	Part Number
Red	12V DC	Buzzer	8HG 958 456-001
Red	24V DC	Buzzer	8HG 958 456-101

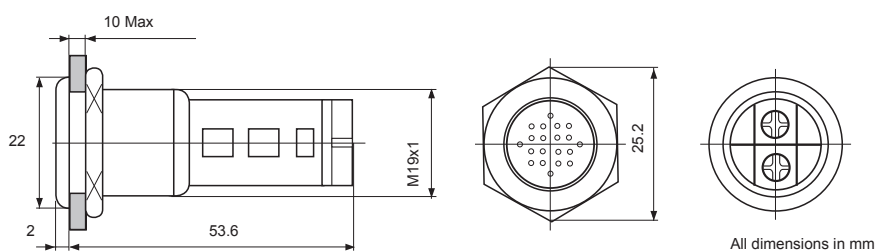
Button Material	304 Stainless Steel
Body Material	304 Stainless Steel
Contact Material	Silver Alloy
Terminal Type	5 Pin (2.8 x 0.5mm) switches 2 screws for buzzer
Panel Thickness	1~ 10mm
Operating Temp	-20°C~ +55°C
Insulation Resistance	≥ 1000mΩ
Contact Resistance	≤ 50mΩ
Max. Switch Rating	5A
Degree of Protection	IP 67 for switches IP 50 for buzzer
Buzzer sound intensity	>80dB (1m)



Button Material	304 Stainless Steel
Body Material	304 Stainless Steel
Contact Material	Silver Alloy
Terminal Type	5 Pin (2.8 x 0.5mm) switches 2 screws for buzzer
Panel Thickness	1~ 10mm
Operating Temp	-20°C~ +55°C
Insulation Resistance	≥ 1000mΩ
Contact Resistance	≤ 50mΩ
Max. Switch Rating	5A
Degree of Protection	IP 67 for switches IP 50 for buzzer
Buzzer sound intensity	>80dB (1m)



Part Number	Description	Operation	LED Ring Colour	Voltage
8HG 958 455-001	Switch - Push Button with Ring Illumination	On/Off	Red	12V
8HG 958 455-011	Switch - Push Button with Ring Illumination	On/Off	Blue	12V
8HG 958 455-101	Switch - Push Button with Ring Illumination	On/Off	Red	24V
8HG 958 455-111	Switch - Push Button with Ring Illumination	On/Off	Blue	24V
8HG 958 455-201	Switch - Push Button with Ring Illumination	Momentary	Red	12V
8HG 958 455-211	Switch - Push Button with Ring Illumination	Momentary	Blue	12V
8HG 958 455-301	Switch - Push Button with Ring Illumination	Momentary	Red	24V
8HG 958 455-311	Switch - Push Button with Ring Illumination	Momentary	Blue	24V



Part Number	Description	Operation	LED Ring Colour	Voltage
8HG 958 456-001	Switch - Push Button with Ring Illumination	On/Off	Red	12V
8HG 958 456-101	Switch - Push Button with Ring Illumination	On/Off	Red	24V



Hella marine
Vision and Innovation

Hella marine

81-83 Ben Lomond Crescent
Pakuranga 2140
Auckland
New Zealand

Phone

+64 9 577 0000

Fax

+64 9 576 2476

Email:

info@hellamarine.com

www.hellamarine.com