

SEAFLO[®]

Premium Portable Travel Toilet

Instruction Manual



DESCRIPTION

SEAFLO premium portable travel toilet, the injection molding process makes the appearance of the product more smooth and textured. The toilet is made of environmentally friendly PP material, which not only inherits the lightweight and durable features of the original portable toilet, but also adds an exhaust button to the waste water tank to decompress and exhaust to prevent sewage from spraying out. The liquid level indicator is innovative from the pointer type to the color scrolling type, which displays the liquid level in the sewage tank and avoids overflow. The integrated design of the drain valve makes the appearance and integrity better. The 270° rotating sewage outlet makes cleaning more convenient. A new built-in storage bin can be used to store detergent or toilet paper to improve user comfort. The upgraded T-shaped flushing method, 360° eddy current flushing makes the toilet cleaner and hygienic. SEAFLO portable toilet is suitable for mobile use such as camping, boating, caravan, cabin, medical, children, family, emergency etc.

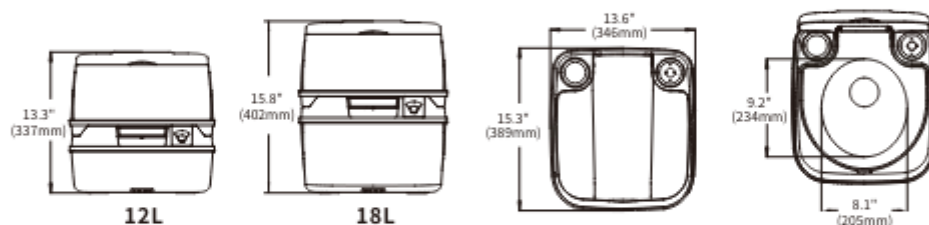
FEATURES

- Sleek, Lightweight and Durable Modern Design
- Fresh Water Tank With Powerful Piston-Flush
- Removable Seat and Seat Cover For Easy Cleaning
- Slick Anti-Stick Oversized Bowl Allows for Easy Flushing
- Detachable Fully-Sealed Holding Tank With Ergonomic Handle
- Rotating Dumping Elbow Allows For Clean and Distant Dumping
- Air Relief Valve Button - Eliminates Dumping Gurgle and Splash-Back
- Superior Sealed Design Prevents Leaks, Spills and Odors While Transporting
- High-Powered Tri-Directional Flush Nozzle
- Waste Tank Level Indicator

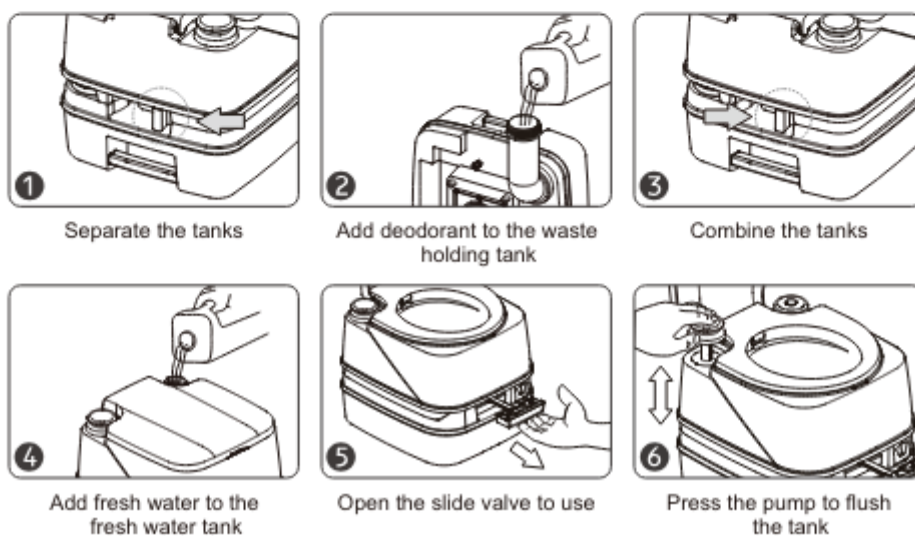
SPECIFICATIONS

Model Number	SFPT-12-03	SFPT-18-03
Fresh water tank	10L (2.6 Gallon)	10L (2.6 Gallon)
Waste holding tank	12L (3.2 Gallon)	18L (4.8 Gallon)
Dimension (L*W*H) mm	346*389*337	346*389*402
Color	White	White
Material	PP, POM, ABS	PP, POM, ABS
Package includes	1 x Portable Toilet, 1 x Owners' Manual	1 x Portable Toilet, 1 x Owners' Manual

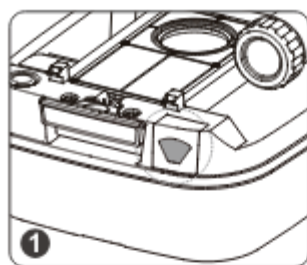
DIMENSION



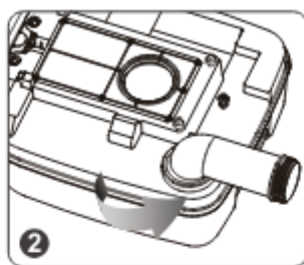
PROCEDURE



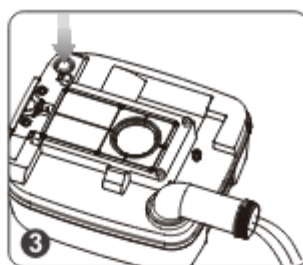
Dirt treatment method



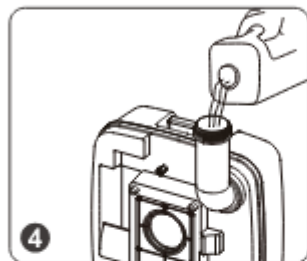
1 The liquid level is displayed in a red screen state



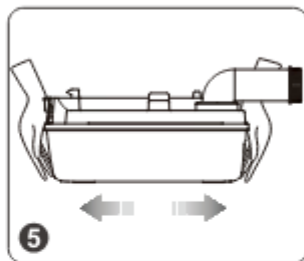
2 Turn out the drain pipe and open the drain pipe cover



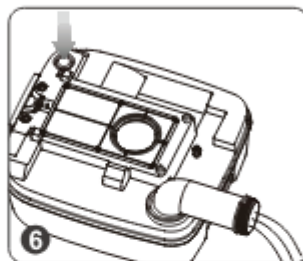
3 Press the exhaust button and discharge the sewage



4 Lift the waste water tank and add 1-2L of clean water



5 Shake the waste water tank from side to side



6 Press and hold the exhaust button and drain again

STORAGE

1. Remove all water from tanks, pump assembly before storing.
2. Store the portable toilet in a dry, clean area.

PRECAUTIONS FOR SAFE USE

1. The toilet must be placed steadily when using it
2. The maximum capacity of the toilet is 200 kg
3. Do not lean on the back cover of the toilet whilst upright
4. Disassembly of the toilet air pump body is prohibited
5. Make sure the side buckle is fastened before using the toilet
6. Tighten the recovery tank cover before the toilet trial

APPLICATION

Your best choice for Marine, RV, Camping, Board Room, Medical Care, Pregnant women, Children and The Elderly.



CAUTION

1. Never add the toilet cleaning fluid to the flush holding tank
2. Make sure you have enough water in the flush tank prior to use
3. Do not lean on the back cover of the toilet whilst upright
4. Clean the holding tank regularly
5. Avoid long term exposure to direct sunlight
6. Avoid high temperatures (over 60 deg. Celsius)
7. Children should be supervised when using this toilet
8. NEVER empty the holding tank directly into the environment

PART LIST

No.	Part Name	Quantity
1	Tank Cover	1
2	Seat Cover	1
3	Fresh Tank	1
4	Piston Pump	1
5	Clasp	1
6	Spring	1
7	Screw	3
8	Container Cap	1
9	Slide Valve	1
10	Waste Tank	1
11	Non-slip Mat	4
12	Observation Window	1
13	Blowdown Block	1
14	Exhaust Stack	1
15	Fixed Plug	3
16	Water Fill Cap	1

