

# HUMMINBIRD® AUTOCHART®

## START UP GUIDE FOR THE AUTOCHART PC SOFTWARE



### Installation

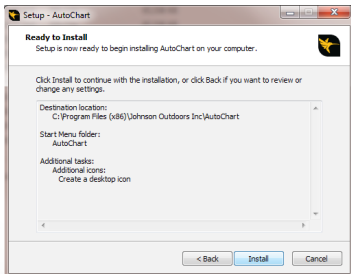
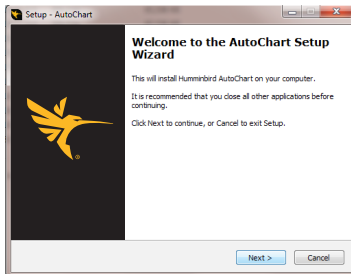
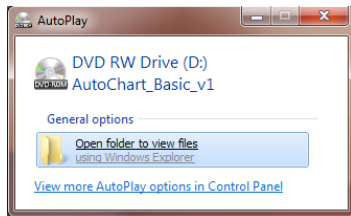
1. Insert the AutoChart® disc into the computer's DVD-Rom drive. The program should automatically start up and display the image to the right on your home screen > Open the folder to view files.

*NOTE: If the program does not automatically start up, Open "My Computer" (Windows XP) or Open "Computer" (Windows Vista, 7, 8, 10)*

2. Double-click on **autochart\_std\_PCSetup\_20XX\_1.exe** < or > **autochart\_pro\_PCSetup\_20XX\_1.exe** (depending on your edition) to begin the installation process.

3. Once the AutoChart Setup Wizard appears on the screen, follow the default selections by clicking through the "Next" prompts to begin the installation of AutoChart on your computer.

4. Once you have completed the Setup Wizard you will be asked if you are Ready to Install. Click "Install" to begin.



# HUMMINBIRD® AUTOCHART®

## START UP GUIDE FOR THE AUTOCHART PC SOFTWARE

5. Wait for the entire program to finish installing before moving on. This may take several minutes to complete.

6. Once installed you'll be asked to register your product online at [www.humminbird.com](http://www.humminbird.com). Please take a moment to register your product so that we will be able to better serve you by allowing access to product updates in the future.

7. After the product has been installed, Select "Launch AutoChart" and close the Setup Wizard by clicking the "Finish" button.

8. When the AutoChart program opens for the first time, it will ask you to enter your license code in the Program Activation Window. Enter the code that came with your package to launch the program.

If you have any trouble with installing AutoChart or are not seeing the correct screens, please call Humminbird Customer Service for additional help at 800.633.1468.

### WARNING!

Do NOT delete or change the **AC folder**, **LkMaster folder**, or **SI folder** on the ZeroLine Map Card.

Removing or changing these folders will permanently damage the ZeroLine Map Card. A fee of \$19.95\* for shipping, handling, and maintenance will be charged for a rewrite of these files in the event of user error.

\*Fee subject to change without notice.

