

AUTOCHART ZERO LINE MAP CARD

ONIX and ION Accessory Guide

532325-1EN_A




TABLE OF CONTENTS


Overview	5	Correct Data	12
Set up the Control Head	5	Display/Hide your AutoChart LIVE Map	13
Plan your Map	6	Adjust the Map Display Settings.....	14
Prepare the Control Head for Mapping.....	7	Follow the Contour.....	18
Record your Custom Map	10	Manage your AutoChart LIVE Files.....	24
Stop Recording.....	11	Contact Humminbird.....	26


THANK YOU!


Thank you for choosing Humminbird®, the #1 name in marine electronics. Humminbird has built its reputation by designing and manufacturing top quality, thoroughly reliable marine equipment. Your Humminbird is designed for trouble-free use in even the harshest marine environment. We encourage you to read this manual carefully in order to get the full benefit from all the features and applications of your Humminbird product.


Contact Humminbird Customer Service at humminbird.com or call **1-800-633-1468**.


 **WARNING!** This device should not be used as a navigational aid to prevent collision, grounding, boat damage, or personal injury. When the boat is moving, water depth may change too quickly to allow time for you to react. Always operate the boat at very slow speeds if you suspect shallow water or submerged objects.


 **WARNING!** The electronic chart in your Humminbird unit is an aid to navigation designed to facilitate the use of authorized government charts, not to replace them. Only official government charts and notices to mariners contain all of the current information needed for the safety of navigation, and the captain is responsible for their prudent use.


 **WARNING!** Do NOT delete or change the folders on the ZeroLine Map Card. Changing these folders will permanently damage the ZeroLine Map Card. To understand the ZeroLine Map Card folder structure, see **Manage your AutoChart LIVE Files**.


 **WARNING!** Humminbird is not responsible for the loss of data files (waypoints, routes, tracks, groups, recordings, etc.) that may occur due to direct or indirect damage to the unit's hardware or software. It is important to back up your PC, control head, and ZeroLine Map Card data files periodically. Data files should also be saved to your PC before restoring the control head defaults or updating the software. See your Humminbird online account at humminbird.com and **Manage your AutoChart LIVE Files** in this manual for more information.


 **WARNING!** Disassembly and repair of this electronic unit should only be performed by authorized service personnel. Any modification of the serial number or attempt to repair the original equipment or accessories by unauthorized individuals will void the warranty.


 **WARNING!** This product contains chemicals known to the State of California to cause cancer and birth defects or other reproductive harm.


 **NOTE:** Do NOT leave the control head SD slot cover open. The slot cover should always be closed to prevent water damage to the unit.


 **NOTE:** Some features discussed in this manual require a separate purchase, and some features are only available on international models. Every effort has been made to clearly identify those features. Please read the manual carefully in order to understand the full capabilities of your model.

 **NOTE:** The illustrations in this manual may not look the same as your product, but your unit will function in the same way.

 **NOTE:** To purchase accessories for your control head, visit our Web site at humminbird.com or contact Humminbird Customer Service at **1-800-633-1468**.

 **NOTE:** The procedures and features described in this manual are subject to change without notice. This manual was written in English and may have been translated to another language. Humminbird is not responsible for incorrect translations or discrepancies between documents.

 **NOTE:** Product specifications and features are subject to change without notice.

 **NOTE:** Humminbird verifies maximum stated depth in saltwater conditions, however actual depth performance may vary due to transducer installation, water type, thermal layers, bottom composition, and slope.

ROHS STATEMENT: Product designed and intended as a fixed installation or part of a system in a vessel may be considered beyond the scope of Directive 2002/95/EC of the European Parliament and of the Council of 27 January 2003 on the restriction of the use of certain hazardous substances in electrical and electronic equipment.


ATTENTION INTERNATIONAL CUSTOMERS: Products sold in the U.S. are not intended for use in the international market. Humminbird international units provide international features and are designed to meet country and regional regulations. Languages, maps, time zones, units of measurement, and warranty are examples of features that are customized for Humminbird international units purchased through our authorized international distributors.

To obtain a list of authorized international distributors, please visit our Web site at humminbird.com or contact Humminbird Customer Service at **[334] 687-6613**.

ENVIRONMENTAL COMPLIANCE STATEMENT: It is the intention of Johnson Outdoors Marine Electronics, Inc. to be a responsible corporate citizen, operating in compliance with known and applicable environmental regulations, and a good neighbor in the communities where we make or sell our products.

WEEE DIRECTIVE: EU Directive 2002/96/EC “Waste of Electrical and Electronic Equipment Directive [WEEE]” impacts most distributors, sellers, and manufacturers of consumer electronics in the European Union. The WEEE Directive requires the producer of consumer electronics to take responsibility for the management of waste from their products to achieve environmentally responsible disposal during the product life cycle.

WEEE compliance may not be required in your location for electrical & electronic equipment (EEE), nor may it be required for EEE designed and intended as fixed or temporary installation in transportation vehicles such as automobiles, aircraft, and boats. In some European Union member states, these vehicles are considered outside of the scope of the Directive, and EEE for those applications can be considered excluded from the WEEE Directive requirement.

 This symbol [WEEE wheelee bin] on product indicates the product must not be disposed of with other household refuse. It must be disposed of and collected for recycling and recovery of waste EEE. Johnson Outdoors Marine Electronics, Inc. will mark all EEE products in accordance with the WEEE Directive. It is our goal to comply in the collection, treatment, recovery, and environmentally sound disposal of those products; however, these requirements do vary within European Union member states. For more information about where you should dispose of your waste equipment for recycling and recovery and/or your European Union member state requirements, please contact your dealer or distributor from which your product was purchased.

AutoChart™, AutoChart LIVE™, Down Imaging®, DualBeam PLUS™, Humminbird®, i-Pilot® Link™, ION™, LakeMaster®, ONIX®, Side Imaging®, X-Press™ Menu, and ZeroLine Map Card™ are trademarked by or registered trademarks of Johnson Outdoors Marine Electronics, Inc.

Adobe, Acrobat, Adobe PDF, and Reader are either registered trademarks or trademarks of Adobe Systems Incorporated in the United States and/or other countries.

Airmar is a registered trademark of Airmar Technology Corp.

Microsoft and Windows are either registered trademarks or trademarks of Microsoft Corporation in the United States and/or other countries.

Navionics® is a registered trademark of Navionics®.

OVERVIEW

AutoChart LIVE uses data from an installed GPS receiver and 2D transducer (down beam, DualBeam PLUS) to create detailed depth maps of your favorite waters.

Map Source: Humminbird LakeMaster or Navionics

Storage: AutoChart LIVE saves 8 hours of mapping data on your control head. After 8 hours of data has been collected, you can erase the data and continue mapping, or you can install a ZeroLine Map Card for unlimited mapping.

More Information: Visit our Web site at humminbird.com for informational videos.

SET UP THE CONTROL HEAD

Perform the procedures in the following section to start using AutoChart LIVE and the ZeroLine Map Card with your ONIX and ION control head.

1 | Update the Control Head Software

It is important to install the latest software update to enable AutoChart LIVE on your control head. AutoChart LIVE is available in ONIX and ION software version 1.200 and later.

Check the Current Software Version

1. Press the HOME key on the control head.
2. Select Settings.
3. Select System Info.

Read the Software Version field to view the software version number. You must have software version 1.200 or later to enable AutoChart LIVE.

Update the Control Head Software

If you need to update the control head software, download the ONIX and ION Software Update Guide from humminbird.com or see your ONIX and ION Control Head Operations Guide. Software updates are posted to your account at humminbird.com.

2 | Install the ZeroLine Map Card

AutoChart LIVE saves 8 hours of mapping data on your control head. After 8 hours of data has been collected, you can erase the data and continue mapping, or you can install a ZeroLine Map Card for unlimited mapping.

To save AutoChart data to the ZeroLine Map Card, the card must be unlocked.

- To unlock the card, hold the card with the label facing up and locate the lock switch on the left side of the card. Slide the switch up (unlocked position).

Install the ZeroLine Map Card

1. With the label facing up, insert the ZeroLine Map Card card into the control head card slot until it clicks into place.
2. Close the SD card door cover.



NOTE: Do not leave the SD slot cover open. The slot cover should always be closed to prevent water damage to the unit.

Confirming the ZeroLine Map Card is Unlocked

switch in
unlocked
position



PLAN YOUR MAP

Before getting started, consider the areas where you want to create a map. Review the following tips to help you plan your map:

General Tips

- Start with your favorite fishing hot spots.
- Take a different route to and from each fishing spot every trip. You may discover new and interesting areas to map.
- Start a new track or recording when you start for the day. Record new data every trip to create new maps or improve existing maps.
- Navigate the boat at a consistent speed when recording data.
- See the illustration below for instruction on how to navigate your boat while recording survey data.

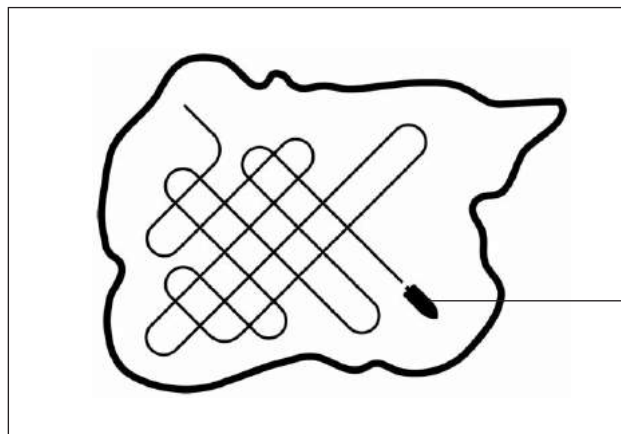
Mapping a Specific Area or Object in Detail

- Navigate the boat across the area rather than alongside.
- Turn the boat where the area and/or object is out of range of the transducer beam[s].
- Try to reduce the measurement time, so as to reduce the error due to possible GPS variations.

Mapping an Entire Lake

- Follow a plan.
- Follow the maximum gradient of the sea floor [up or down].
- Keep a steady speed. Trolling speeds to low speeds are recommended.
- Turn the boat where the bottom is flat if possible.

Navigating the Boat to Record Survey Data



Navigate your boat in a zig-zag pattern, first in one direction and then in the other.

1. PREPARE THE CONTROL HEAD FOR MAPPING

When you start your mapping for the day, it is important to note if the water level is higher or lower than usual. It is also important to use your 2D transducer beams exclusively.

1 | Set the Map Source

AutoChart LIVE can be used when Humminbird LakeMaster or Navionics is set as the map source. When you install a map card, the map source is changed automatically to match the SD card map source. You can also change the map source using the Settings tool.

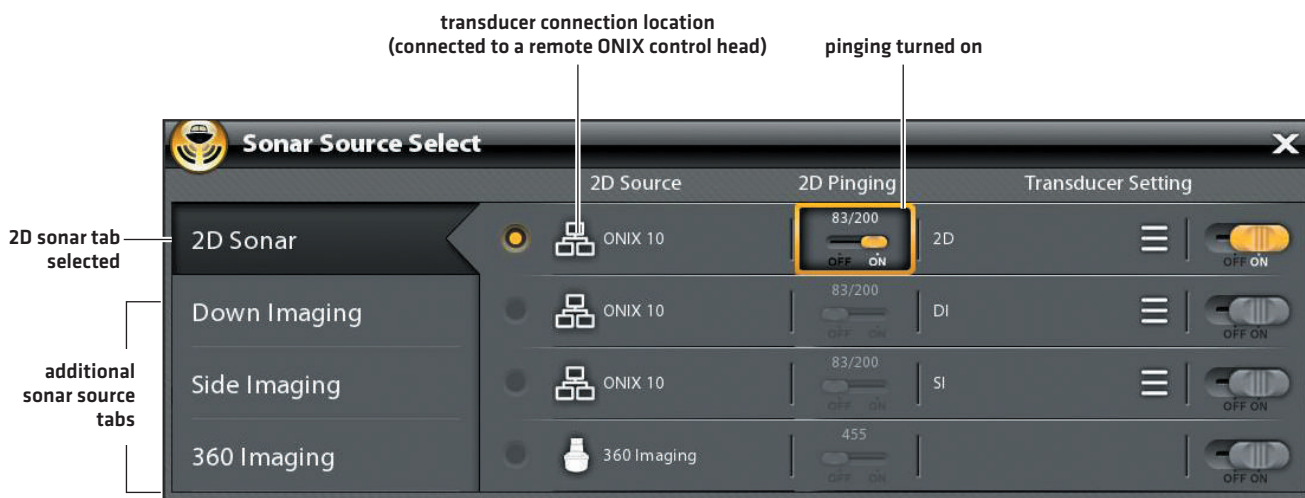
1. Press the HOME key.
2. Select Settings.
3. Select Chart.
4. Select Humminbird or Navionics.

2 | Confirm the 2D Transducer and Turn off Additional Transducers

To record your custom map, you must have a reliable and accurate digital depth from a pinging 2D transducer. You can use your Humminbird DualBeam PLUS transducer (83/200 kHz or 50/200 kHz), Side Imaging transducer with 2D (down beam) capabilities, or a CHIRP transducer with 2D (down beam) capabilities.

When you are recording your map, you should have only one 2D transducer pinging on your boat. If you have other 2D transducers pinging on remote control heads, you should turn them off. Down Imaging and Side Imaging beams can operate at the same time. You do not need to turn them off.

1. Press the HOME key.
2. Select Settings.
3. Select Sonar.
4. Select Sonar Source.
5. Select the 2D Sonar tab.
6. Confirm that 2D Pinging is turned on. Tap the **Pinging** on/off button, or press the ENTER key, to turn it **on**.

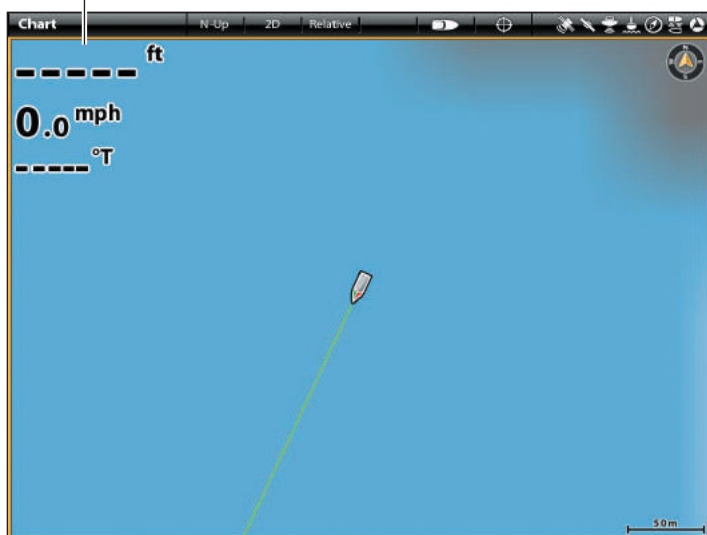


7. Press and hold the EXIT key to close the menu system.
8. If there are additional control heads on your boat with a 2D transducer, confirm that they are not pinging while you are mapping. There should be only one 2D transducer pinging on your boat during the recording process.

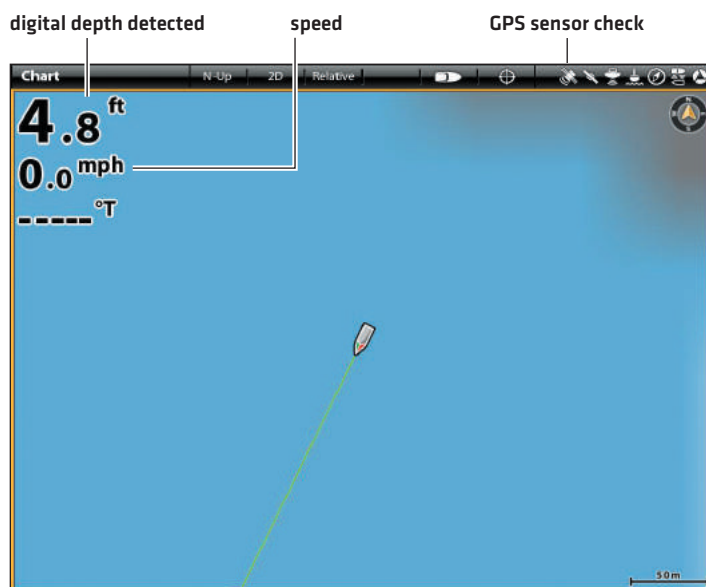
3 | Confirm Digital Depth and GPS Fix

1. Press the HOME key.
2. Select a Chart View from the Views tool or the Favorites bar.
3. **Confirm Digital Depth:** Confirm the depth digital readout is displayed.
It may take a moment for depth to be displayed.
4. **Confirm GPS Fix:** Review the status bar and confirm the GPS icon is white. Confirm the speed digital readout is displayed.

digital depth missing



digital depth detected



4 | Adjust the Water Level Offset

When you start your mapping for the day, it is important to note if the water level is higher or lower than usual. For example, if you know the lake is down 3 feet, set the Water Level Offset to -3.

1. With a Chart View displayed on-screen, tap Chart in the status bar, or press the MENU key once.
2. Select AutoChart LIVE.
3. Select Map Options.
4. Select Water Level Offset.

Tap the on/off button, or press the ENTER key, to turn it on.

5. Press and hold the slider, or press and hold the ENTER key, to adjust the setting.

If the water level is higher than normal, set a positive amount.

If the water level is lower than normal, set a negative amount.

If the water level has not changed [normal], turn off Water Level Offset.

5 | Display the Current Track [optional]

It is helpful to display the current track so you can see where the boat has already traveled while you're recording the map.

1. With a Chart View displayed on-screen, tap Chart in the status bar, or press the MENU key once.
2. Select Chart Options.
3. Select Overlays > Nav Data.
4. Tap the Nav Data on/off button, or press the ENTER key, to turn it on.
5. Add a check mark to Tracks [Active].
6. Press and hold the EXIT key until the menu system is closed.

Track Color: To change the track color, select the Home Screen > Nav Data Tool > Tracks > Current Track. Press the ENTER key.

6 | Start a Sonar Recording for AutoChart PC [optional]

If you are planning to use AutoChart PC, start a sonar recording before you start recording your custom map. Sonar Recording can be started from the Recordings tool or from the X-Press Menu in a Sonar View. The instructions for the Recordings tool are shown here.

1. Press the HOME key.
2. Select the Recordings tool.
3. Select Record Sonar.
4. Select Recording Sources. Tap 2D Sonar, or press the ENTER key, to add a check mark to the box.
5. Press the EXIT key.
6. Select Start Recording.

The recording will be saved to the control head or to a blank, unlocked SD card. The file can be imported into AutoChart PC for conversion.



NOTE: Visit our Web site at humminbird.com to purchase AutoChart PC and download the AutoChart Installation and Operations Guide.

2. RECORD YOUR CUSTOM MAP

1. **Preparation:** Before you start mapping for the day, confirm that the control head is set up as shown in the section *Prepare the Control Head for Mapping*.
2. With a Chart View displayed on-screen, tap Chart in the status bar, or press the MENU key once.
3. Select AutoChart LIVE.
4. Select Record.
5. Tap the on/off button, or press the ENTER key, to turn it on.

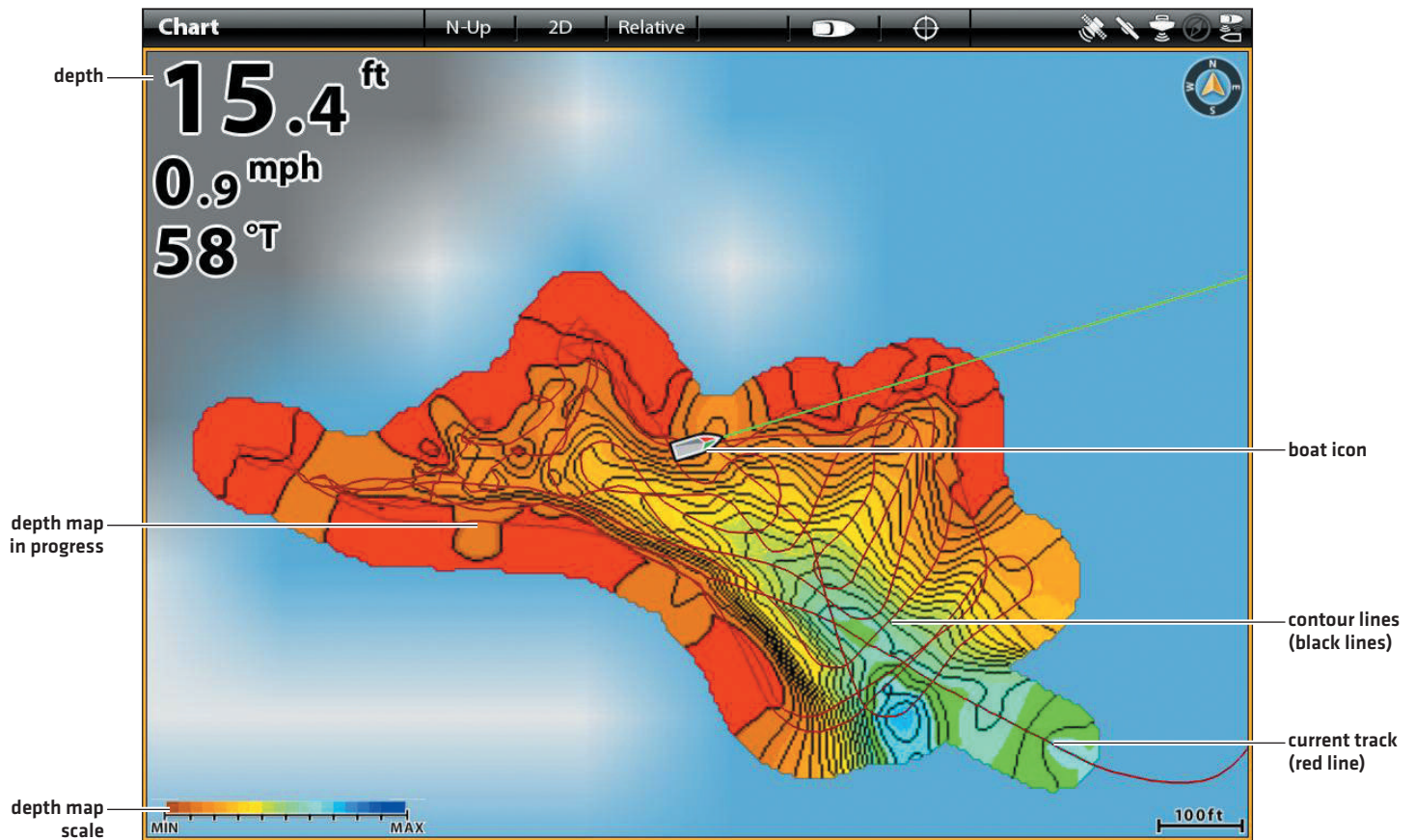
Display: Select AutoChart LIVE. Tap the check box, or press the ENTER key, to add a check mark to it.

Zoom In: Press the + ZOOM key to see the depth data on the Chart View.

Navigate your boat in a zig-zag pattern, first in one direction and then in the other. Maintain a consistent low speed to trolling speed while you map. See *Plan your Map* for details.

Starting an AutoChart LIVE Recording





3. STOP RECORDING

Use the instructions in this section to stop recording. Your map is automatically saved to the control head [internal] or to the ZeroLine Map Card if it is installed.

1. With a Chart View displayed on-screen, tap Chart in the status bar, or press the MENU key once.
2. Select AutoChart LIVE.
3. Select Record. Tap the on/off button, or press the ENTER key, to turn it off.

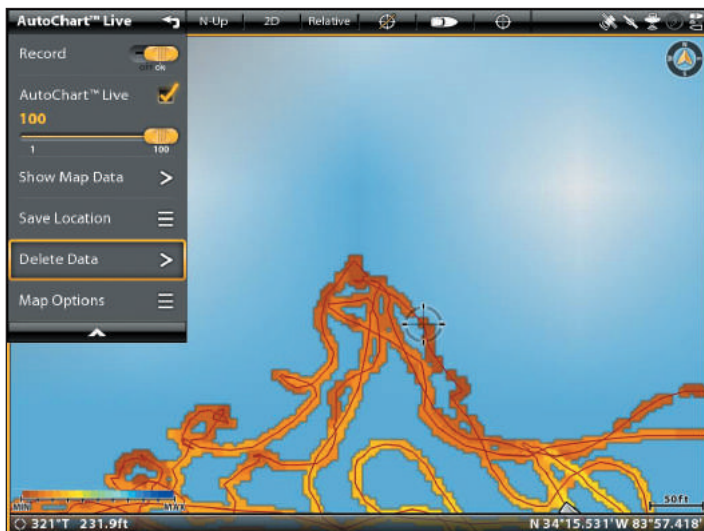
CORRECT DATA

If you see an irregularity in the data [such as lost depth], it can be corrected. Recording must be turned off while you correct the data.

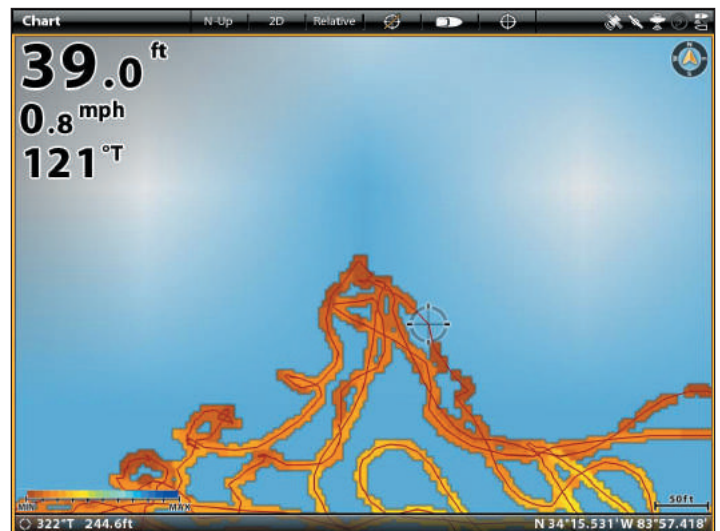
1. With a Chart View displayed on-screen, tap Chart in the status bar, or press the MENU key once.
2. Select AutoChart LIVE.
3. **Turn Off Recording:** Select Record. Tap the on/off button, or press the ENTER key, to turn it off.
4. Select Show Raw Data.
5. Press the +ZOOM key to see individual data points.
6. Tap the data point, or use the Joystick to select the data point.
7. From the AutoChart LIVE menu, select Delete Data.

Optional: Record the area again. See *Record your Custom Map*.

Selecting a Data Point



The Data Point is Removed



DISPLAY/HIDE YOUR AUTOCHART LIVE MAP

The custom map can be displayed or hidden while you are recording or after the map is saved. You can also adjust the transparency.

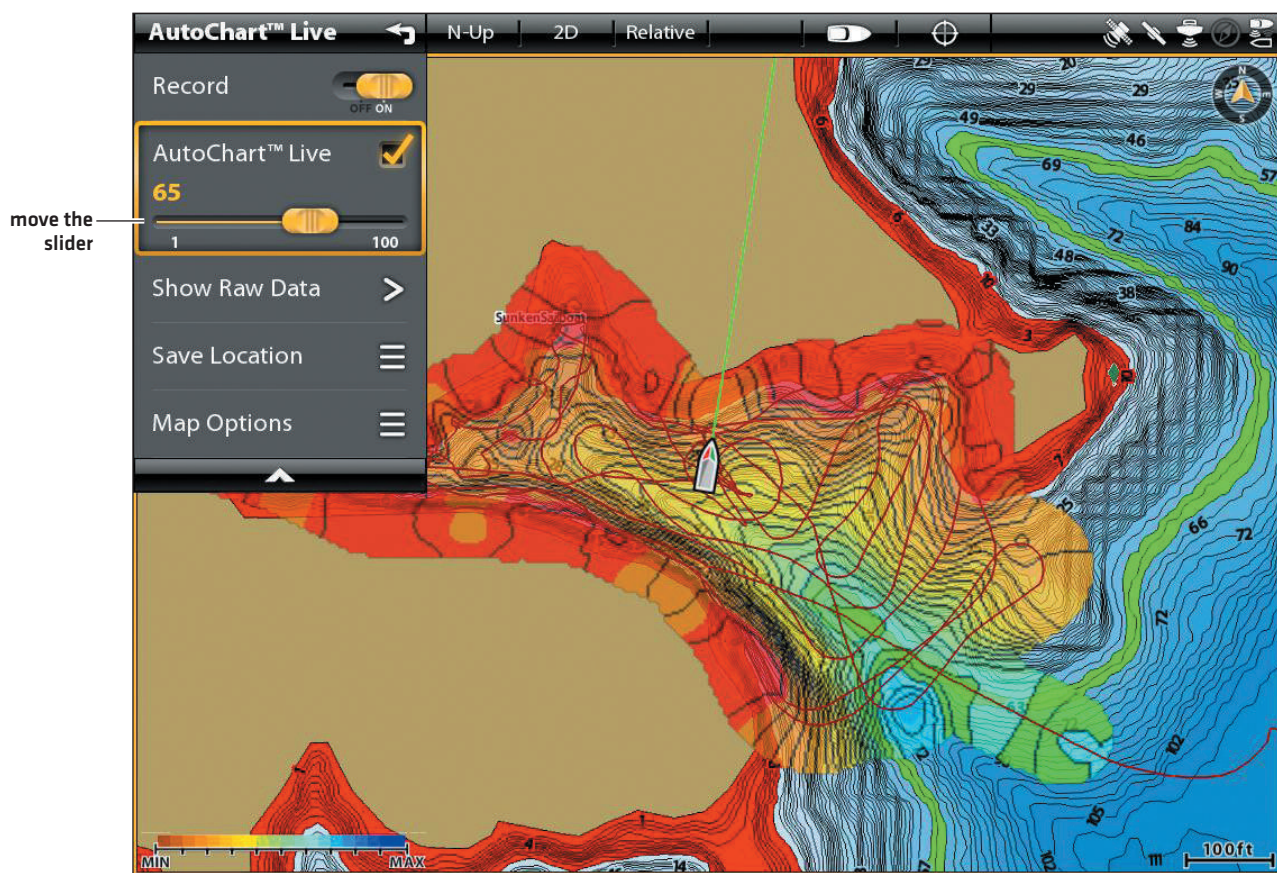
Display/Hide the Map

1. With a Chart View displayed on-screen, tap Chart in the status bar, or press the MENU key once.
2. Select AutoChart LIVE.
3. Select AutoChart LIVE. Tap the check box, or press the ENTER key, to add/remove the check mark.

Adjust the Transparency

1. Press and hold the AutoChart LIVE slider, or turn the Rotary dial, to adjust the transparency.

Adjusting the Overlay Transparency



ADJUST THE MAP DISPLAY SETTINGS

The Map Options menu allows you to adjust the depth range, contour interval, water level offset, and map position. Some of the menu options in this section may be displayed in other parts of the menu system so that you can access them quickly. No matter where you make the change, the control head will update the setting across the system.

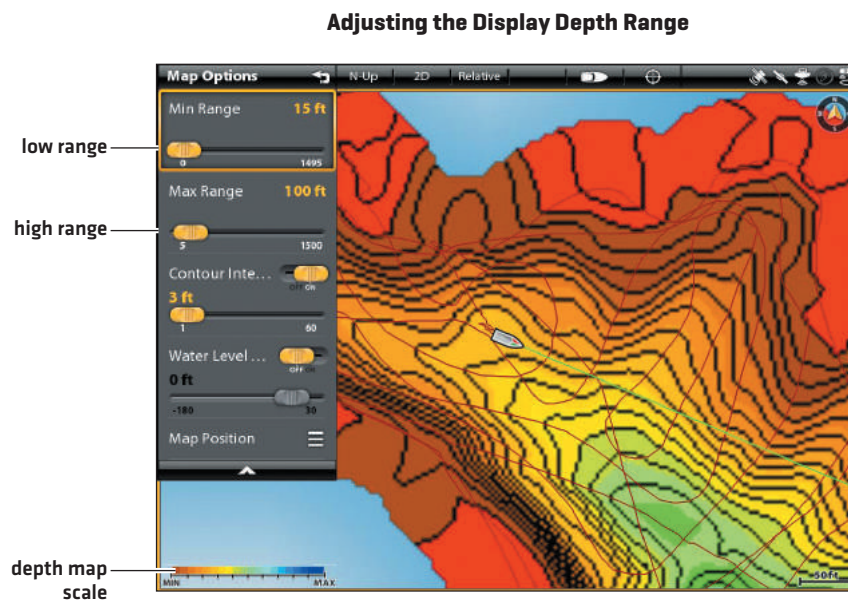
Open the Map Options Menu

1. With a Chart View displayed on-screen, tap Chart in the status bar, or press the MENU key once.
2. Select AutoChart LIVE.
3. Select Map Options.

Adjust the Depth Range

You can adjust the range of data shown on the chart by changing the minimum range and maximum range on the display. The range you select affects how the depth colors are displayed. For related color or shading options, see **Add Settings with Chart Options**.

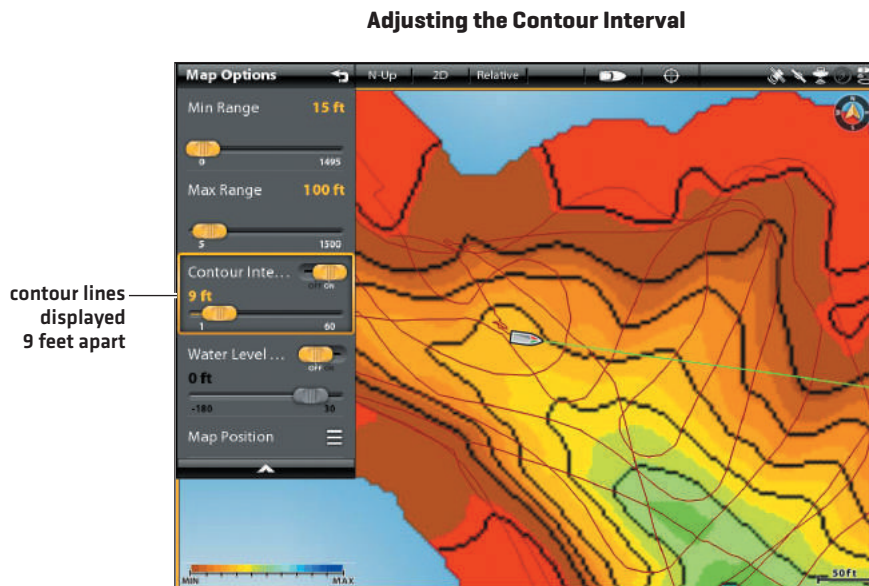
1. From the Map Options menu, select Min Range.
2. Press and hold the slider, or press and hold the ENTER key, to adjust the setting.
3. Select Max Range.
4. Press and hold the slider, or press and hold the ENTER key, to adjust the setting.



Display or Adjust the Contour Interval

You can display or hide the contour lines on the map, and you can adjust the slider to set the distance between each contour line. Contour Interval is also affected by the Water Level Offset setting.

1. From the Map Options menu, select Contour Interval.
2. Tap the on/off button, or press the ENTER key, to turn it on.
3. Press and hold the slider, or press and hold the ENTER key, to adjust the setting.



Change the Water Level Offset

When you start your mapping for the day, it is important to note if the water level is higher or lower than usual. See *Prepare the Control Head for Mapping* for more information.

1. From the Map Options menu, select Water Level Offset.
2. Tap the on/off button, or press the ENTER key, to turn it on.
3. Press and hold the slider, or press and hold the ENTER key, to adjust the setting.

If the water level is higher than normal, set a positive amount.

If the water level is lower than normal, set a negative amount.

If the water level has not changed [normal], turn off Water Level Offset.

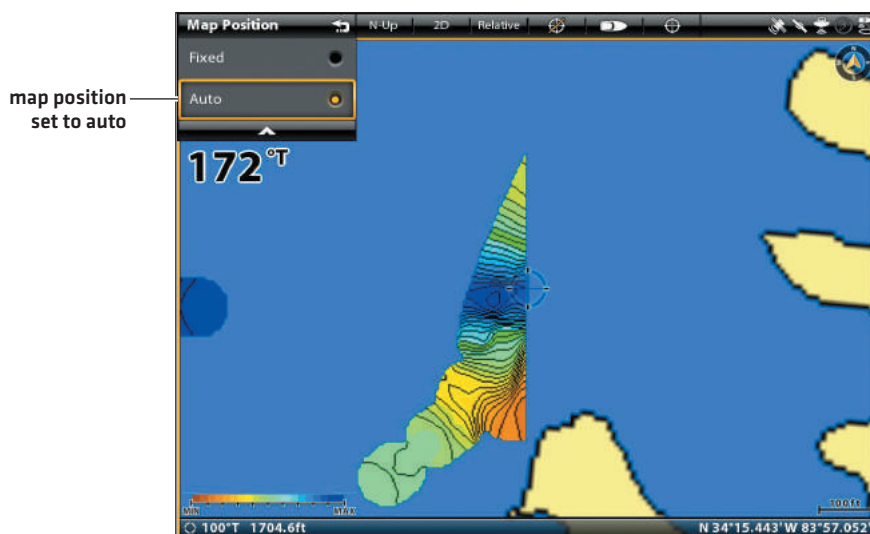
Change the Map Position

The custom map will be displayed on-screen based on the Map Position setting. **While you are recording a map, the Map Position should be set to Auto.**

1. From the Map Options menu, select Map Position.
2. Select Fixed or Auto.

Fixed	The map data is locked into the current position when Fixed is selected. The map will stay fixed until you change the Map Position setting to Auto.
Auto	The map data will move with the boat icon on-screen. If the cursor is active, the map data closest to the cursor position will be displayed.

Auto: Data Displayed Closest to Cursor Position



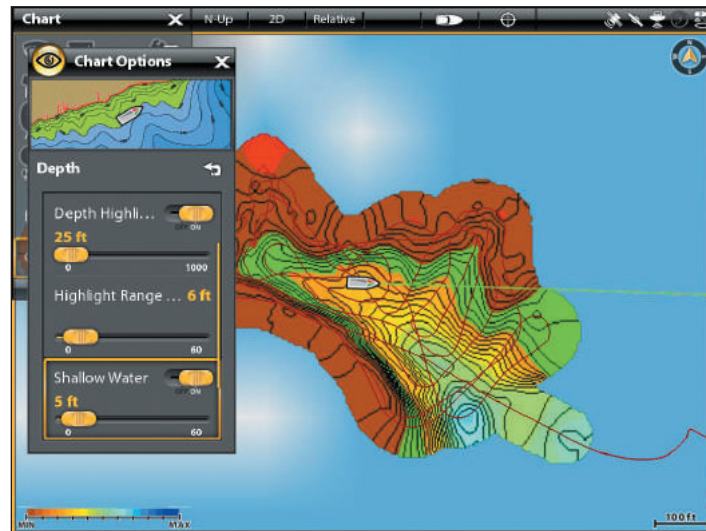
Add Settings with Chart Options

You can also add adjustments to your custom map using the Chart Options menu. The menu options are determined by the selected map source.

1. With a Chart View displayed on-screen, tap Chart in the status bar, or press the MENU key once.
2. Select Chart Options.
3. Select Preferences.
4. **If Humminbird is the selected map source, select Depth.**

If Navionics is the selected map source, select AutoChart LIVE.

Adding Shallow Water Settings to the Map (Map Source: Humminbird)



Depth Colors (Humminbird only)	Turn on Depth Colors and adjust the range for depth shading in the Chart Views.
Depth Highlight	Turn on Depth Highlight to highlight a depth setting in the Chart Views. The depth you set will be highlighted in green. Use Depth Highlight with Highlight Range.
Highlight Range	When a Depth Highlight is active in the Chart Views, use Highlight Range to highlight a range on each side of the highlighted depth. For example, if you know a certain fish is holding at 18 to 20 feet, you can set the Depth Highlight to 19 feet, and the Highlight Range to +/- 1 foot. The view will show a green band from 18 to 20 feet.
Shallow Water	Turn on Shallow Water and adjust the slider. When the depth is equal to or less than the amount set, it will be highlighted in red in the Chart Views. For example, if your boat has a draft of 3 feet, set the Shallow Water menu to 3 feet, and the unit will draw a red band from 0 to 3 feet.
Contour Interval (Humminbird only)	Turn on Contour Interval to display lines at set intervals on the Chart View. Adjust the slider to set the distance between each line. Contour Interval is also affected by the Water Level Offset setting.

FOLLOW THE CONTOUR

Follow the Contour allows you to navigate a depth contour using i-Pilot Link [separate purchase required]. You can select a contour line and follow it in either direction, or use the Contour Offset feature to stay a set distance from a contour line or shoreline. When you start i-Pilot Link navigation to Follow the Contour, all other types of navigation are stopped on the Humminbird control head and the Ethernet network.

Required: i-Pilot Link with a ZeroLine Map Card or i-Pilot Compatible LakeMaster Chart Card. To purchase i-Pilot Link, and for more information, visit our Web site at humminbird.com or contact Humminbird Customer Service.



WARNING! See your i-Pilot manual for warnings, safety information, and operations instructions. You are responsible for the safe and prudent operation of your vessel. The i-Pilot Link is designed to be an accurate and reliable tool that will enhance boat operation and improve your ability to catch fish. This product does not relieve you from the responsibility for safe operation of your boat. You must avoid hazards to navigation and always maintain a permanent watch so you can respond to situations as they develop. You must always be prepared to regain manual control of your boat. Learn to operate your i-Pilot Link in an area free from hazards and obstacles.

Preparation

Before you use Follow the Contour, contour lines should be displayed on the Chart View and the Water Level Offset must be set.

Adjust the Water Level Offset

When you start your mapping for the day, it is important to note if the water level is higher or lower than usual. For example, if you know the lake is down 3 feet, set the Water Level Offset to -3. For more information, see ***Prepare the Control Head for Mapping.***

1. With a Chart View displayed on-screen, tap Chart in the status bar, or press the MENU key once.
2. Select AutoChart LIVE.
3. Select Map Options.
4. Select Water Level Offset.

Tap the on/off button, or press the ENTER key, to turn it on.

5. Press and hold the slider, or press and hold the ENTER key, to adjust the setting.

If the water level is higher than normal, set a positive amount.

If the water level is lower than normal, set a negative amount.

If the water level has not changed [normal], turn off Water Level Offset.

Set the Contour Lines to Visible

Turn on Contour Intervals to display contour lines on the Chart View. Adjust the Contour Intervals slider to set the distance between each contour line [optional]. A larger interval will display fewer contour lines on the chart. A lower interval will display more contour lines on the chart. Contour Intervals must be turned on to use Follow the Contour navigation.

1. With a Chart View displayed on-screen, tap Chart in the status bar, or press the MENU key once.
2. Select AutoChart LIVE.
3. Select Map Options.
4. Select Contour Intervals.
5. **On/Off:** Tap the on/off button, or press the ENTER key, to turn it on.

Adjust [optional]: Press and hold the slider, or press and hold the ENTER key, to adjust the setting.

Start Follow the Contour Navigation

You can start i-Pilot Link navigation if the boat position is within 1/4 mile of the selected contour. During navigation, the direction can be changed using Reverse under the Follow the Contour menu.



NOTE: When the i-Pilot Link is following the contour, the Current Track is not saved, and iTracks cannot be recorded. See your i-Pilot Link manual for details.

1. Select a Contour Line in the Chart View

Touch Screen

1. Press and hold a position on a contour line.

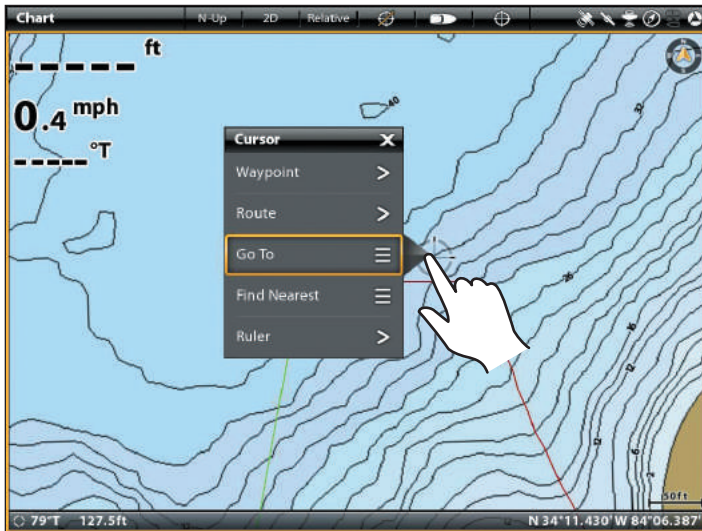
Proceed to *Set the Contour Offset*.

Keypad

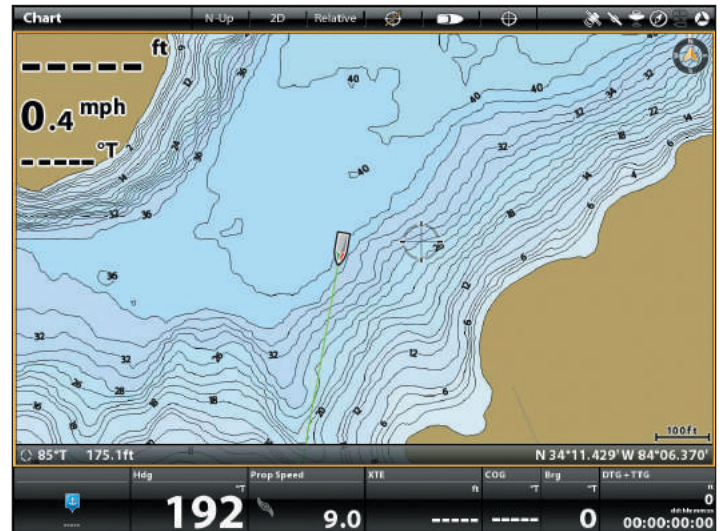
1. Use the Joystick to move the cursor to select a contour line.

Proceed to *Set the Contour Offset*.

Using the Touch Screen to Select a Contour Line

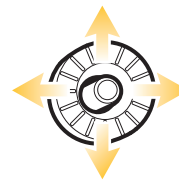


Using the Joystick to Select a Contour Line



Press and Hold to Select

OR



Select

2. Set the Contour Offset

You can set Contour Offset to maintain a set distance from a contour line. Contour Offset is a distance setting only, and does not measure water depth. Input the Contour Offset based on your knowledge of the water depth in your current area.

Navigate along a Bank or Shoreline: If you have an AutoChart ZeroLine Map Card, and want to navigate along a bank or shoreline, use Contour Offset to maintain a safe distance from the shoreline.

Adjust: Contour Offset can be adjusted while Follow the Contour navigation is in progress by selecting Contour Offset from the Go To menu.



WARNING! Contour Offset does NOT account for changes in water depth. It is important to be aware of depth variations in your current location and selected navigation route, and adjust the Contour Offset as needed.

Touch Screen

1. From the Cursor menu, select Go To.
2. Select Follow the Contour.
3. Select Contour Offset.
4. **Adjust:** Press and hold the slider, or drag the slider.

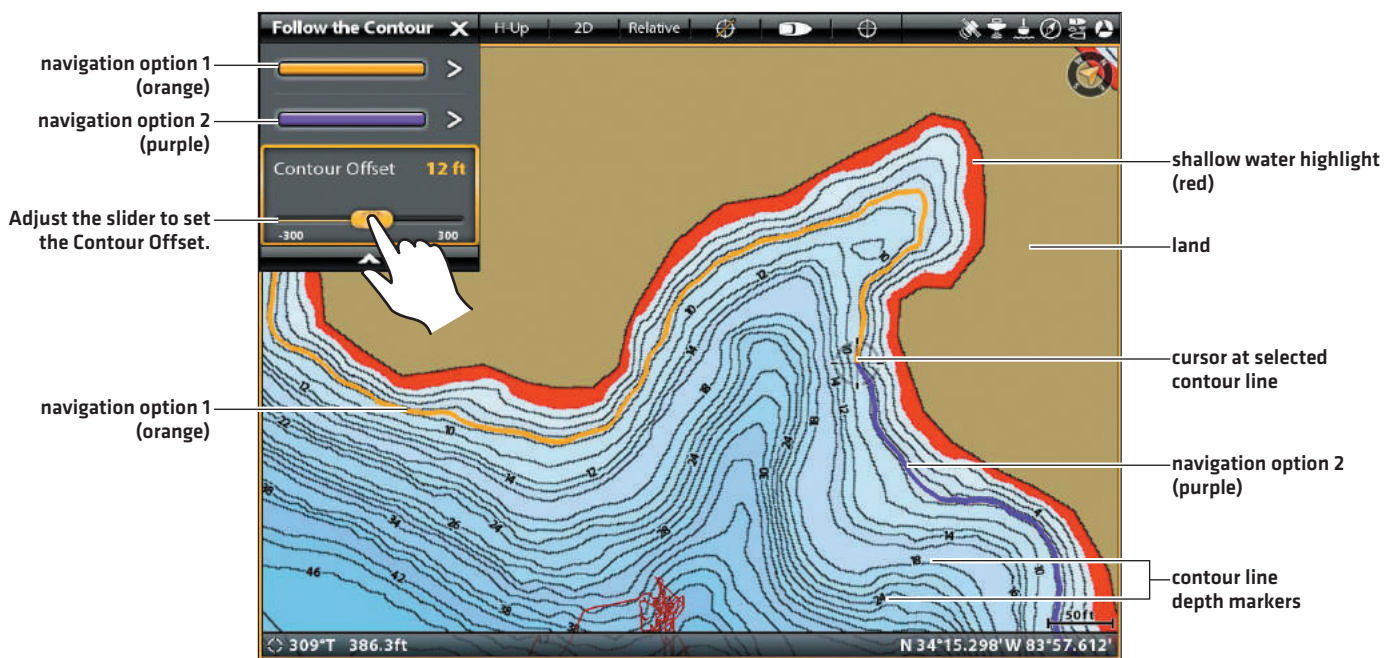
Remove the Offset: Set the offset to 0 [off].

Keypad

1. Press the GO TO key.
2. Select Follow the Contour.
3. Select Contour Offset.
4. **Adjust:** Turn the Rotary dial, or press and hold the ENTER key.

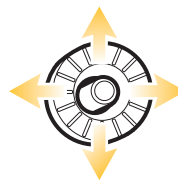
Remove the Offset: Set the offset to 0 [off].

Setting the Contour Offset

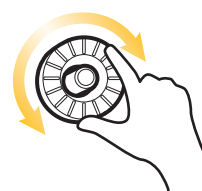


Press and hold to Adjust Slider

OR



Select



Turn to Adjust the Setting

3. Start Follow the Contour Navigation

⚠ WARNING! If any depth sounding within the selected contour line is below 5 feet (1.5 meters), a confirmation box will display. Select Confirm to confirm the depth warning and start navigation. Select Cancel to cancel Follow the Contour navigation.

Touch Screen

- 1. From the Follow the Contour submenu, select a navigation direction. The navigation direction will be previewed in orange or purple on the chart.
- 2. To start navigation, turn on the i-Pilot Link prop.

The selected contour line will turn to black. A gray line will also be displayed indicating the projected route and will reflect the Contour Offset setting.

Reverse: To travel the opposite direction of the contour line, tap Chart in the status bar. Select Go To > Reverse.

Cancel Navigation: Tap Chart in the status bar. Select Go To > Cancel Navigation.

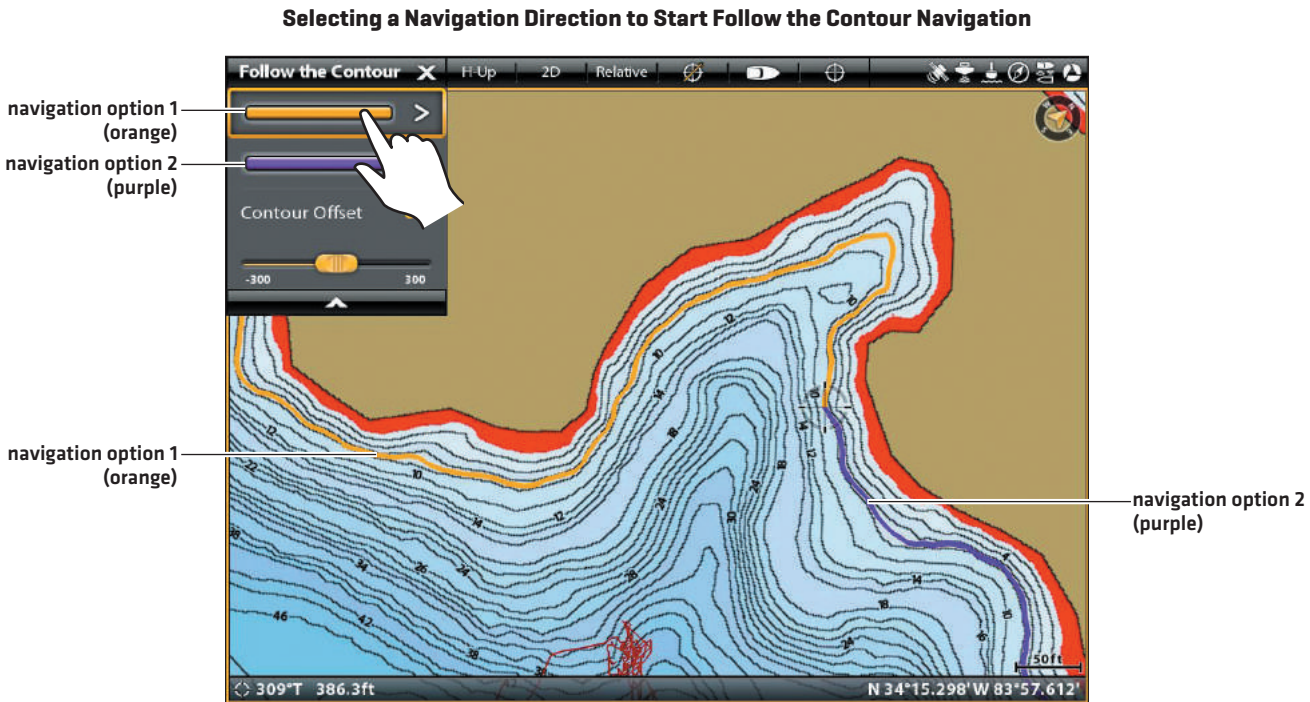
Keypad

- 1. From the Follow the Contour submenu, select a navigation direction. The navigation direction will be previewed in orange or purple on the chart.
- 2. Press the ENTER key.
- 3. To start navigation, turn on the i-Pilot Link prop.

The selected contour line will turn to black. A gray line will also be displayed indicating the projected route and will reflect the Contour Offset setting.

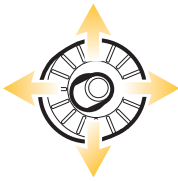
Reverse: To travel the opposite direction of the contour line, press the GO TO key and select Reverse.

Cancel Navigation: Press the GO TO key. Select Cancel Navigation.



Tap to Select

OR

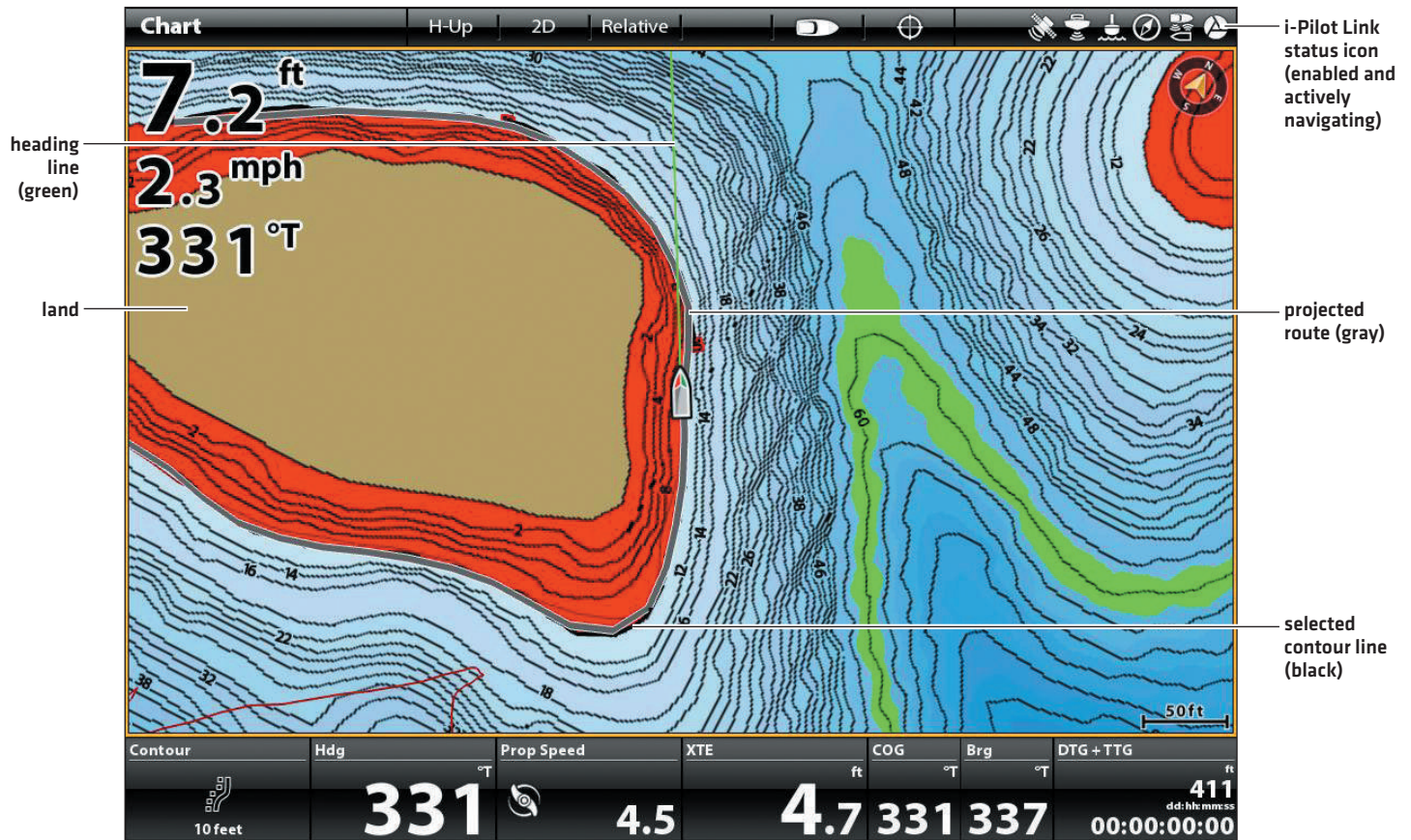


Select



Confirm

Follow the Contour Navigation



Adjust the Contour Offset During Navigation

The Contour Offset can be adjusted while Follow the Contour navigation is in progress.

Touch Screen

1. Tap Chart in the status bar. Select Go To.
2. Select Follow the Contour.
3. Select Contour Offset.
4. **Adjust:** Press and hold the slider, or drag the slider.

Remove the Offset: Set the offset to 0 [off].

Keypad

1. Press the GO TO key.
2. From the Go To menu, select Follow the Contour.
3. Select Contour Offset.
4. **Adjust:** Turn the Rotary dial, or press and hold the ENTER key.

Remove the Offset: Set the offset to 0 [off].



WARNING! Contour Offset does NOT account for changes in water depth. It is important to be aware of depth variations in your current location and selected navigation route, and adjust the Contour Offset as needed.

Reverse Direction During Follow the Contour Navigation

If you are navigating a contour line, you can quickly change the navigation direction by selecting Reverse.

Touch Screen

1. Tap Chart in the status bar. Select Go To.
2. Select Reverse.

Cancel Navigation: Tap Chart in the status bar. Select Go To > Cancel Navigation.

Keypad

1. Press the GO TO key.
2. Select Reverse.
3. Press the ENTER key.

Cancel Navigation: Press the GO TO key. Select Cancel Navigation.

MANAGE YOUR AUTOCHART LIVE FILES

It is important to understand how your ZeroLine Map Card is set up.



WARNING! Humminbird is not responsible for the loss of data files (waypoints, routes, tracks, groups, recordings, etc.) that may occur due to direct or indirect damage to the unit's hardware or software. It is important to back up your PC, control head, and ZeroLine Map Card data files periodically.

ZeroLine Map Card Folder Structure

Whether you are using the ZeroLine Map Card on your Humminbird control head or your PC, it is helpful to understand the folder structure on the card.



WARNING! Do NOT delete or change the folders on the ZeroLine Map Card. Changing these folders will permanently damage the ZeroLine Map Card.



NOTE: If you are using the ZeroLine Map Card with AutoChart PC, your LakeMaster files and other data will be added to the card. In this case, you may need to manage the storage space on your ZeroLine Map Card. See the AutoChart PC Installation and Operations Guide for more information. Visit humminbird.com to download the guide.

AC: AutoChart LIVE map data is saved to the AC folder on the ZeroLine Map Card. The AC folder stores your custom map files. **Do NOT change the contents of this folder!**

LkMaster: This folder provides the basemap files for your regional map. **Do NOT change the contents of this folder!**

Back up your Files

Your ZeroLine Map Card provides years of AutoChart LIVE map space. Use the instructions in this section to back up your AutoChart LIVE files by copying them to your PC [personal computer] and/or an external drive. If your ZeroLine Map Card is damaged, you can replace the card and maintain your custom map using your saved files.

Back up the ZeroLine Map Card Files

When you save files to your PC, keep your AutoChart LIVE files together in a directory that is easy to locate. For tips on using the PC mouse or copying and pasting files, see *Tips for Copying and Pasting Files*.



WARNING! Do NOT separate or delete files that are saved to the same folder. See **ZeroLine Map Card Folder Structure** for details.

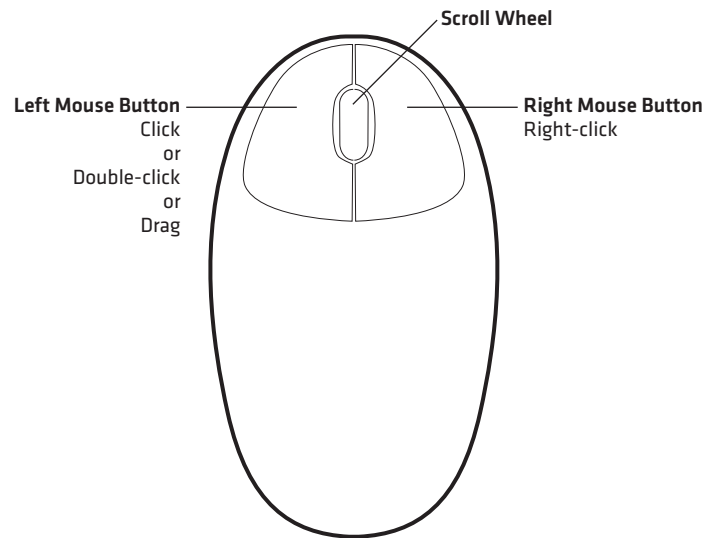
1. On your PC, open the directory where you want to keep your file copies.
2. Right-click the directory and select New > Folder. Name the folder **AC** [name the folder with all uppercase letters].
3. Insert the ZeroLine Map Card into the card slot on your PC.
4. Open the ZeroLine Map Card on your PC.
5. Open the AC folder. Select all the files in the folder and copy them to the AC folder on your PC.

Share your AutoChart LIVE Files

You can share your AutoChart LIVE files with another ZeroLine Map Card owner by copying the contents of your AC folder.

1. Open the ZeroLine Map Card on your PC.
2. Open the AC folder. Select all the files in the folder and copy them to the AC folder on the other ZeroLine Map Card.

Tips for Copying and Pasting Files



Mouse Functions

Click: Press and release the left mouse button once.

Double-click: Press and release the left mouse button quickly twice.

Drag: Press and hold the left mouse button while you move the mouse pointer to a new area.

Hover: Move the mouse pointer over a button on the toolbar, and the button function will display on-screen.

Right-click: Press and release the right mouse button. The right-click function is often used to open a related submenu.

Scroll: Click a window scroll bar on the screen, and move the mouse scroll wheel up or down to view more of the window. You can also use the scroll wheel to zoom in or out.

Tips for Copying and Pasting Files

The basic instructions for copying and pasting a file to another folder are shown in this section. These instructions will vary with the type of Microsoft Windows operating system you are using. For more information, consult your Microsoft Windows manual.

1. Double-click a folder to open it.
2. Select the file[s] you want to copy:

To select one file, click it.

To select all files in a folder, select Ctrl + A on your keyboard.

To select several individual files, hold down the Ctrl key on your keyboard. Click a file to select it. Continue to hold down the Ctrl key and select additional files.

3. Right-click the selected file[s]. Select Copy from the submenu.
4. Open the destination folder.
5. Right-click the folder directory. Select Paste from the submenu.

CONTACT HUMMINBIRD

Contact Humminbird Customer Service in any of the following ways:

Web site:

humminbird.com

E-mail:

service@humminbird.com

Telephone:

1-800-633-1468

Direct Shipping:

Humminbird
Service Department
678 Humminbird Lane
Eufaula, AL 36027 USA

Hours of Operation:

Monday - Friday

8:00 a.m. to 4:30 p.m. [Central Standard Time]

Social Media Resources:



[Facebook.com/HumminbirdElectronics](https://www.facebook.com/HumminbirdElectronics)



[Twitter.com \[@humminbirdfish\]](https://twitter.com/@humminbirdfish)



[YouTube.com/humminbirdtv](https://www.youtube.com/humminbirdtv)

