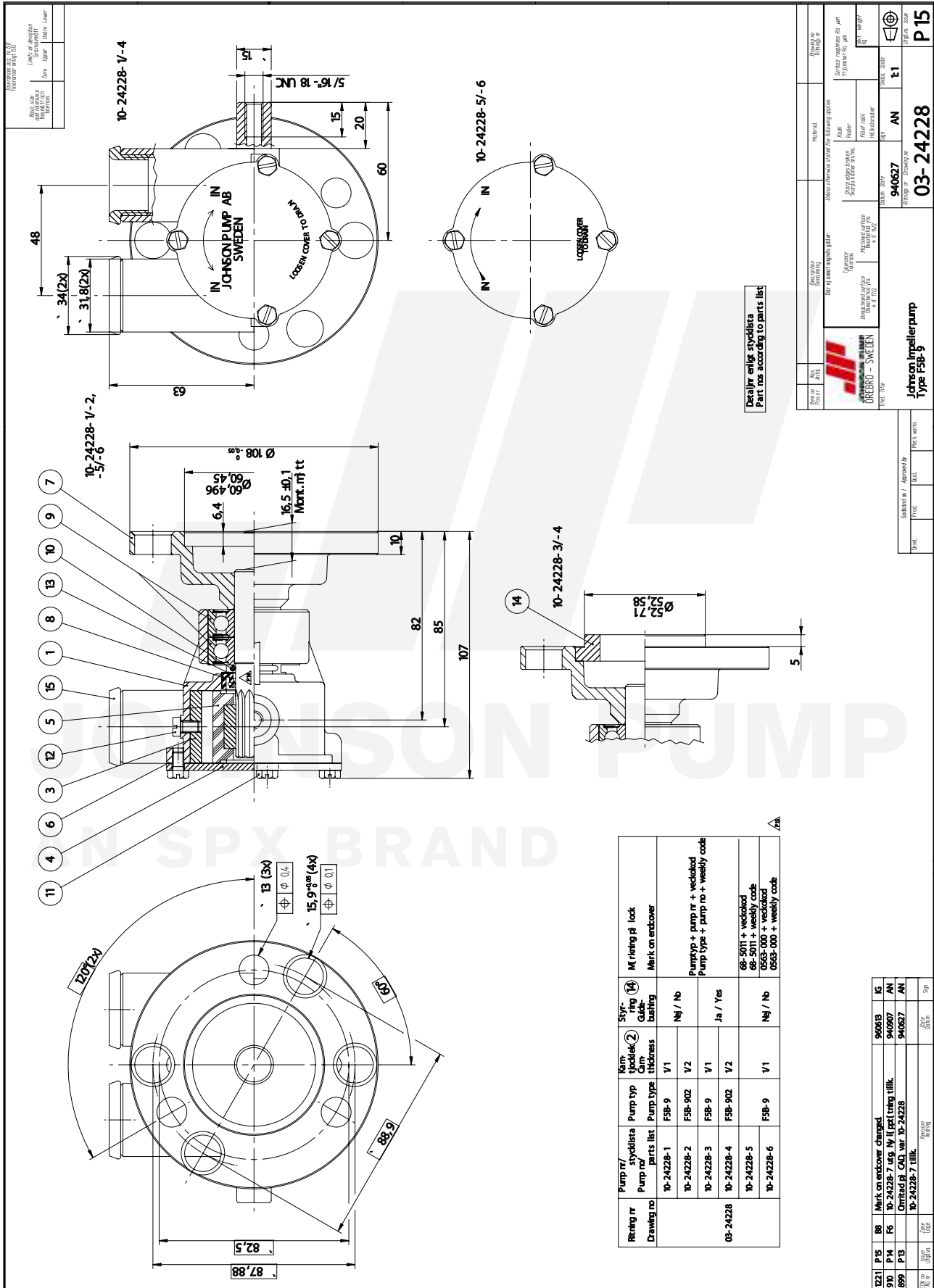


**F5B-9 Impeller pump
Art. No. 10-24228-1**

Part no.	Description GB	Position	Quantity
01-24229	BODY F5B-9	1	1
01-45329	CAM 1/1 F5B-9	3	1
01-45312-1	ENDCOVER F5B/F6B-9	4	1
08-1027B	IMPELLER	5	1
01-45315	GASKET F5B/F6B-9	6	1
04-46408-01	CARRIER COMPLETE	7	1
0.2233.001	LIP SEAL 16X28X7 DPSM	8	1
0.3431.742	BALL BEARING 6203 2 RS1 ST	9	2
0.2173.402	O-RING 15.3X2.4 SS1586 NBR70	10	1
0.0141.502	SCREW M5X8 DIN933SLOTTED BRASS	11	4
0.0279.033	SCREW M5X8 ISO1207 BRASS	12	1
01-45680	WASHER F5B/F6B/F7B	13	1
01-45953	HOSE BUSHING F5/F6B-9	15	2



Detaļir enģe stādīdā Part nos according to parts list

 JOHNSON PUMP AB PERBERG - SWEDEN Tel: +46 30 400000 Fax: +46 30 400001 E-mail: johnsonpump@johnsonpump.se		Material: AN Part no: 940637 Qty: 1	Drawing no: 03-24228 Title: Johnson Impeller pump Type F5B-9
Drawing no: P 15		Drawing no: P 15	

Pump nr / Drawing no	Pump type	Pump type thickness	Mem. thickness	Stry. Cast bashing	MC riting pl lock	IG
10-24228-1	F5B-9	V1		Nej / No	Mark on endcover	96063
10-24228-2	F5B-902	V2		Nej / No	Pump typ + pump nr + veckod Pump type + pump no + weekly code	94067
10-24228-3	F5B-9	V1		Ja / Yes		94067
10-24228-4	F5B-902	V2		Ja / Yes		94067
10-24228-5	F5B-9	V1		Nej / No	68-5011 + veckod 68-5011 + weekly code 0563-000 + veckod 0563-000 + weekly code	94067
10-24228-6	F5B-9	V1		Nej / No		94067