

PRODUCT BASIC INFORMATION

# OCEANLINK 52MM GAUGES

Best Performance in Outdoor Environments



# OCEANLINK 52MM GAUGES

## Precision CAN Instrumentation for Leisure Boats

### KEY FEATURES

- ▶ AMP Superseal EasyLink connector
- ▶ Current consumption <100mA
- ▶ Anti-fog double layer plastic lens
- ▶ Front & rear protection rating IPx7
- ▶ Operating temperature -20°C to +70°C
- ▶ 240° pointer deflection angle

The OceanLink 52mm gauges are connected directly to any OceanLink Master unit using the patented EasyLink serial bus connection.

Up to 16 EasyLink gauges for each Master can be daisy-chained together.

The OceanLink Gauges come in two versions with different dial colors, which is always completed with the bezel in identical color. Optional chrome bezels are available as decorative accessory.

### TECHNICAL DATA

<b>Housing</b>	Material: PBT-FR Black / White
<b>Dimensions</b>	Installation diameter
<b>Operating Temperature</b>	-20°C to 70°C
<b>Storage Temperature</b>	-30°C to 85°C
<b>Operating Voltage</b>	9.0 to 32 VDC
<b>Current Consumption</b>	< 100mA @ 12V
<b>Protection Class</b>	IP X7 front and rear
<b>EMC</b>	DIN-EN 61000-6-2:2006 IEC 60945:2002/ISO7637-2
<b>Approval</b>	CE, UKCA, RoHS
<b>Flammability</b>	UL94-V0
<b>Mounting</b>	Top or flush mount
<b>Nominal Position</b>	NL 0 to NL 85; DIN 16257
<b>Data Input</b>	EasyLink

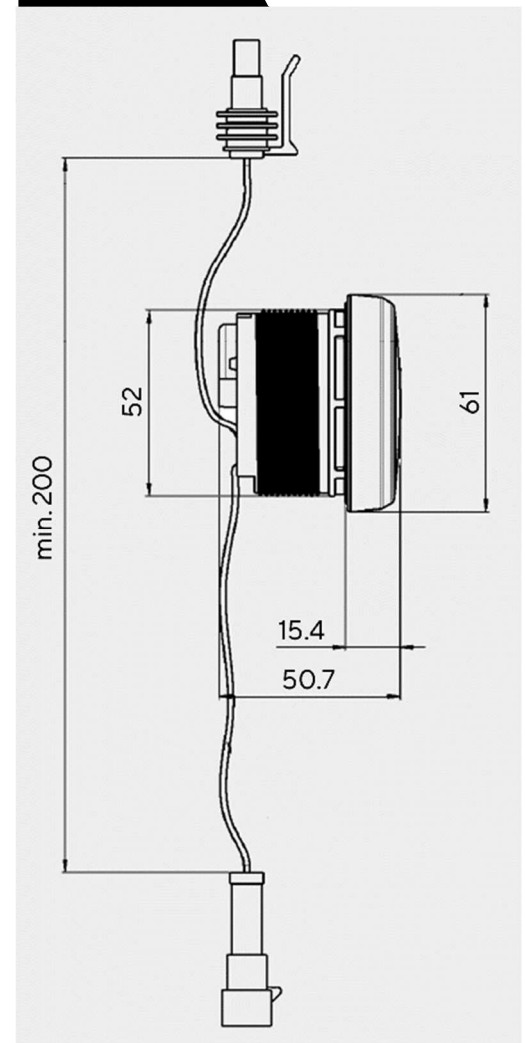
### CONNECTOR

Pin	Wire Color	Signal
1	Red	Power
2	Blue	EasyLink - Data
3	Yellow	Ground

### AMP Superseal 1.5



### DIMENSIONS



# TEMPERATURE GAUGES

Part No	Type	Color	Range
A2C1065950001	Coolant Temperature	Black	120°C / 250°F
A2C1065860001	Coolant Temperature	White	120°C / 250°F
A2C1065980001	Coolant Temperature	Black	Cold / Hot
A2C10659900001	Coolant Temperature	White	Cold / Hot
A2C1065850001	Engine Oil Temperature	Black	150°C / 300°F
A2C1065860001	Engine Oil Temperature	White	150°C / 300°F
A2C1065870001	Engine Oil Temperature	Black	Cold / Hot
A2C1065880001	Engine Oil Temperature	White	Cold / Hot
A2C1349690001	Pyrometer	Black	900°C / 1650°F
A2C1349710001	Pyrometer	White	900°C / 1650°F
A2C1349700001	Pyrometer	Black	1650°F / 900°C
A2C1349730001	Pyrometer	White	1650°F / 900°C



A2C1065950001



A2C1065980001



A2C1065860001



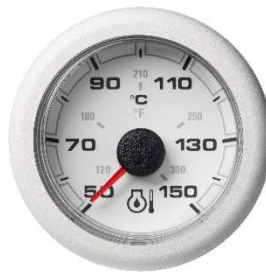
A2C10659900001



A2C1065850001



A2C1065870001



A2C1065860001



A2C1065880001



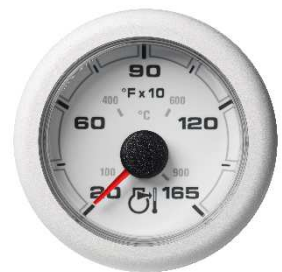
A2C1349690001



A2C1349700001



A2C1349710001



A2C1349730001

# PRESSURE GAUGES

Part No	Type	Color	Range
A2C1066140001	Boost Pressure	Black	2bar / 30psi
A2C1066150001	Boost Pressure	White	2bar / 30psi
A2C1066160001	Boost Pressure	Black	Low / High
A2C1066170001	Boost Pressure	White	Low / High
A2C1066000001	Engine Oil Pressure	Black	10bar / 150psi
A2C1066010001	Engine Oil Pressure	White	10bar / 150psi
A2C1066020001	Engine Oil Pressure	Black	Low / High
A2C1066030001	Engine Oil Pressure	White	Low / High
A2C1066040001	Transmission Oil Pressure	Black	30bar / 440psi
A2C1066050001	Transmission Oil Pressure	White	30bar / 440psi
A2C1066060001	Transmission Oil Pressure	Black	Low / High
A2C1066070001	Transmission Oil Pressure	White	Low / High



A2C1066140001



A2C1066160001



A2C1066150001



A2C1066170001



A2C1066000001



A2C1066020001



A2C1066010001



A2C1066030001



A2C1066040001



A2C1066060001



A2C1066050001



A2C1066070001

# VESSEL AND BATTERY GAUGES

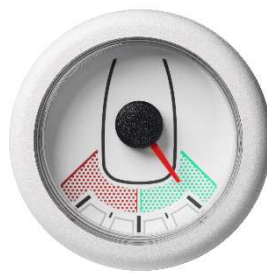
Part No	Type	Color	Range
A2C1066080001	Rudder Angle	Black	-45° / +45°
A2C1066090001	Rudder Angle	White	-45° / +45°
A2C1065830001	Engine Trim	Black	Up / Down
A2C1065840001	Engine Trim	White	Up / Down
A2C1349640001	Battery Current	Black	-60 / +60A
A2C1349660001	Battery Current	White	-60 / +60A
A2C1349650001	Battery Current	Black	-120 / +120A
A2C1349680001	Battery Current	White	-120 / +120A
A2C1066100001	Battery Voltage	Black	8 - 16V
A2C1066110001	Battery Voltage	White	8 - 16V
A2C1066120001	Battery Voltage	Black	16 - 32V
A2C1066130001	Battery Voltage	White	16 - 32V



A2C1066080001



A2C1065830001



A2C1066090001



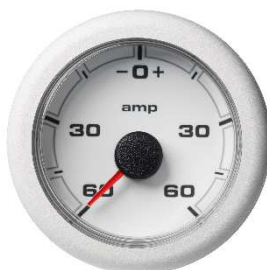
A2C1065840001



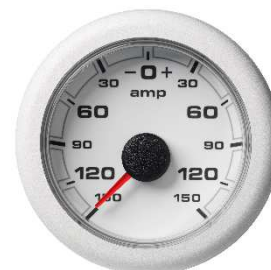
A2C1349640001



A2C1349650001



A2C1349660001



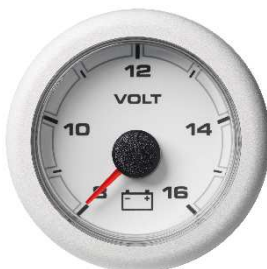
A2C1349680001



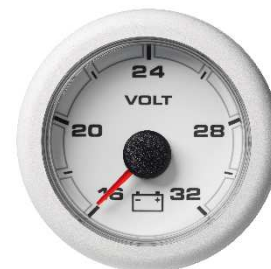
A2C1066100001



A2C1066120001



A2C1066110001



A2C1066130001

---

## **OUTDOOR INSTRUMENTATION ENGINEERED IN SWITZERLAND**

**Veratron AG** / Industriestrasse 18 / 9464 Rüthi / Switzerland  
T +41 71 7679 111 / [info@veratron.com](mailto:info@veratron.com) / [veratron.com](http://veratron.com)

The information provided in this brochure contains only general descriptions or performance characteristics, which do not always apply as described in case of actual use or which may change as a result of further development of the products. This information is merely a technical description of the product. It is not meant or intended to be a special guarantee for a particular quality or particular durability. An obligation to provide the respective characteristics shall only exist if expressly agreed in the terms of contract. We reserve the right to make changes in availability as well as technical changes without prior notice.  
Veratron AG / English © 2021