

# WIPER MOTOR | W12

## Mounting Instructions

Before installation please read these instructions.



- » **2 Speed, self-parking**
- » **Heavy Duty motor, 12Nm**
- » **Wipershaft in stainless steel**
- » **Various sweep angle: 45 - 110°**
- » **CE approved; EMC protected**
- » **Spray proof IP65**
- » **Insulated ground for metal, plastic and wooden boats.**
- » **Powers up to 610 mm x 560 mm /24" x 22" arm/blade combinations.**

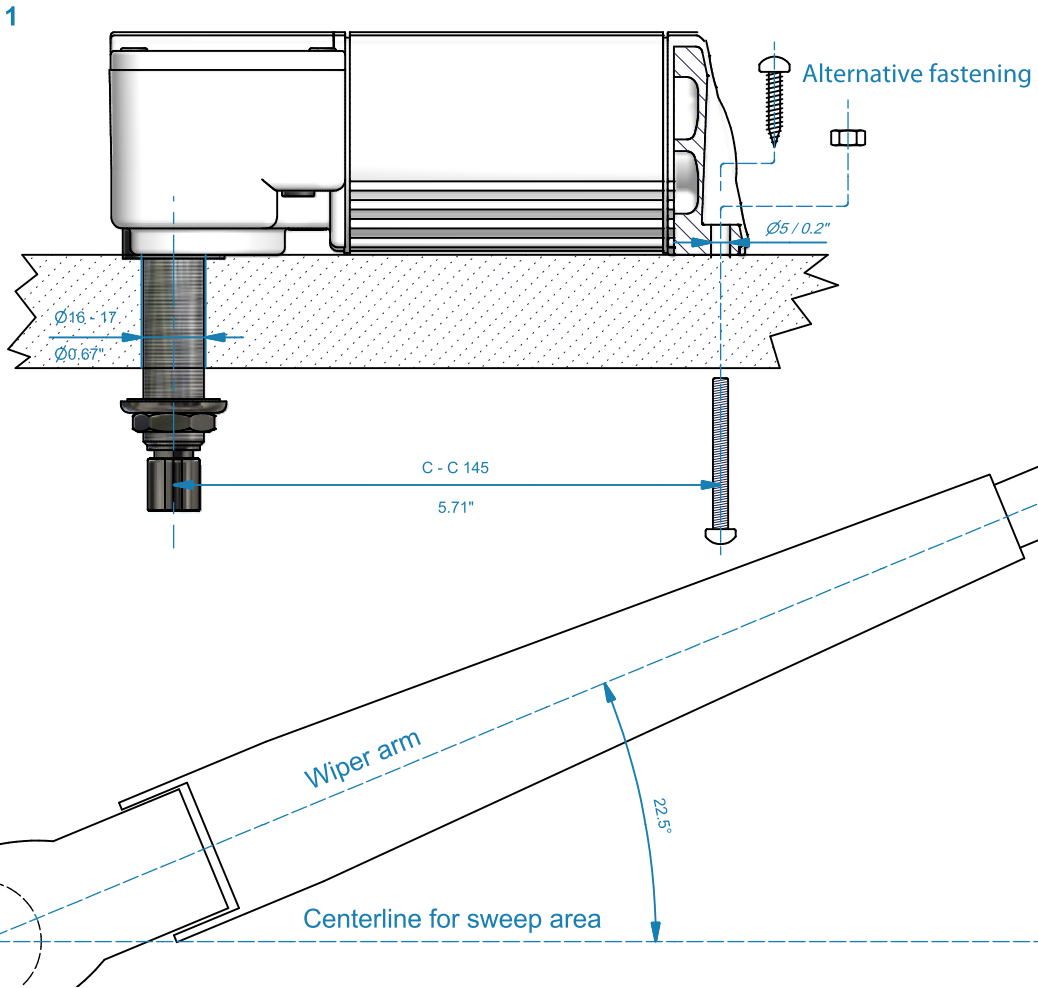
**ROCA®**

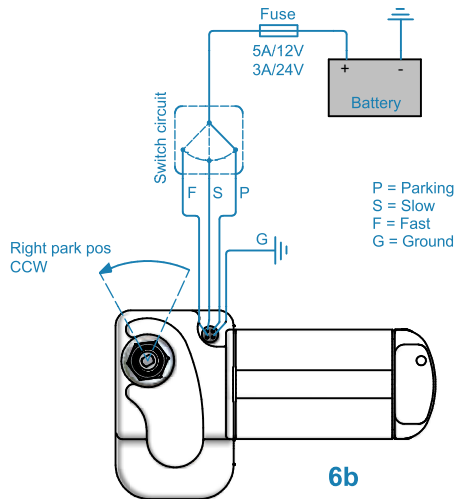
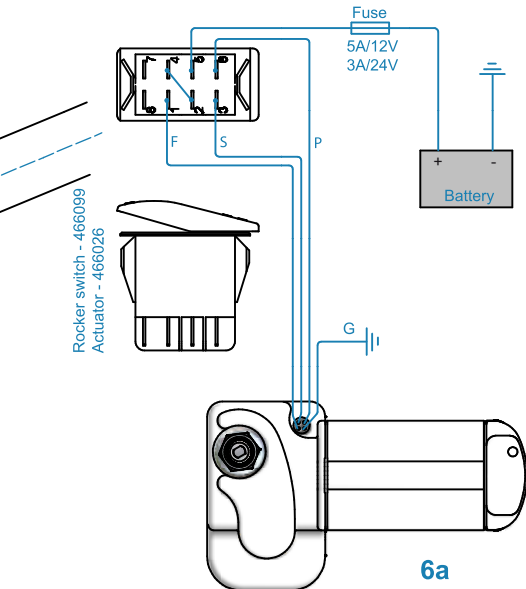
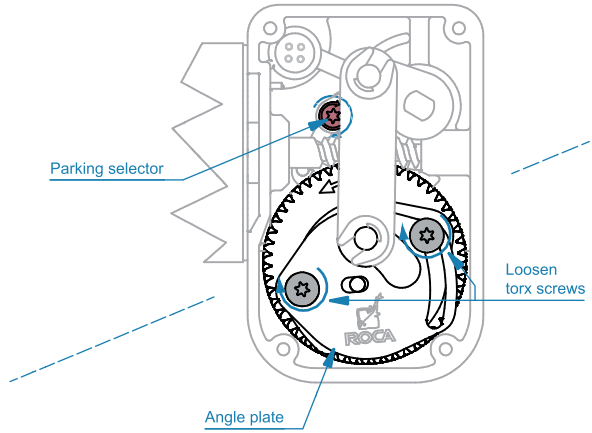
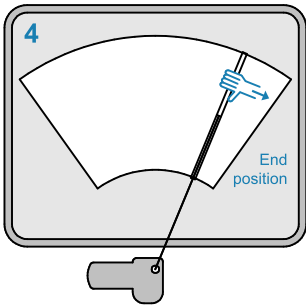
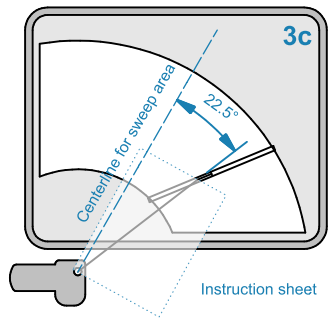
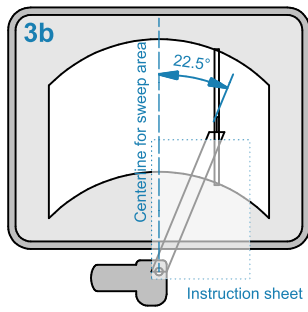
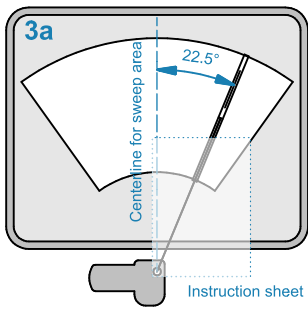
## Mounting instructions - Wiper motor | W12

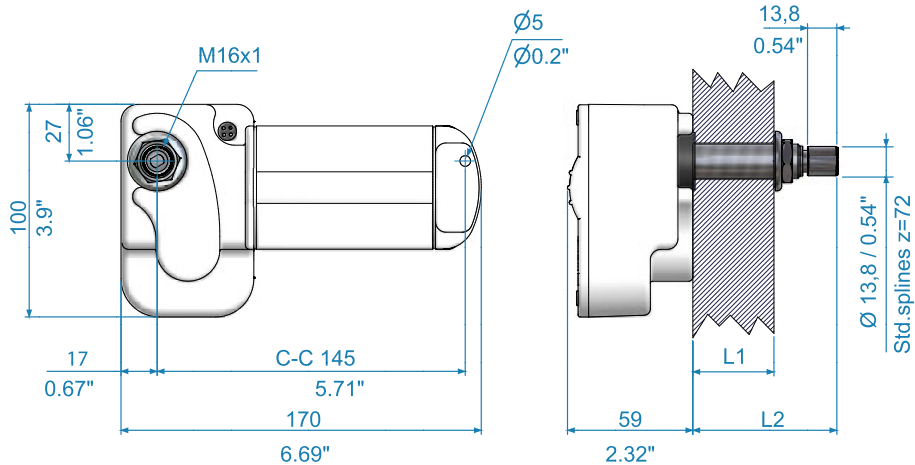
Keep battery main switch turned off during operation inside of the wiper motor

1. Remove cover with enclosed torx key.
2. Locate the mounting position .Drill mounting holes (template provided on the box). Mount motor to the surface. **See picture 1.**
3. The motor is pre-set to 45° sweep and right parking position. To set the arm in correct position do as following:
  - a. Find the centerline of the desired sweep area.
  - b. Attach the wiper arm 22.5° from the centerline (use the attached template below). **See picture 2 and 3.**
4. Loosen the two screws on the angle plate with the enclosed torx key. **See picture 5.** Move the arm to desired end position of sweep area. **See picture 4.** Tighten the two screws firmly.
5. To set the self-parking feature to park in the left position use the enclosed torx key and turn the parking selector clockwise **See picture 5.**
6. Connect wires as shown in **picture 6.**  
If using Roca switch 466099/466208 use **6a.** For all other switches use **6b.**  
Use a 5Amp fuse for 12V and 3Amp for 24V.
7. Make sure the gasket is in right position and replace the cover on the motor with the screws taken out.

**Note:** If the arm sweeps too far out on both sides, the sweep angle needs to be reduced, repeat point 5 above. If the arm goes too far on one side only then you did not start with the arm in center of the sweep. Remove the arm and place it at the correct position.





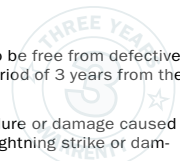


**VARIATIONS:**

Max length:		Voltage input:	
L1	L2	12V	24V
16 / 0.63"	38 / 1.5"	533011	533012
41 / 1.61"	64 / 2.5"	533021	533022
66 / 2.6"	90 / 3.5"	533031	533032

**Limited warranty**

- » Roca warrants the wiper motors to be free from defective material and workmanship for a period of 3 years from the date of purchase.
- » This warranty does not apply to failure or damage caused by improper installation, misuse, lightning strike or damage from a power surge.
- » If failure occurs during this period, return it to your dealer for repair or replacement.



**OPTIONAL:**

*Wiper arm, Wiper blade, Control box, Spray system*

**Adjustable windshield arms**

Coated stainless steel with UV-protection.  
Wiper blade



**Wiper arm adjustable. Hook-type connection.**

310–440 mm / 12"–17"  
480–610 mm / 19"–24"



**Wiper arm adjustable TIP 40° R/L. Hook-type connection.**

340–470 mm / 13.5"–18.5"  
480–610 mm / 19"–24"



**Pantograph arm adjustable. Hook-type connection.**

340–470 mm / 13.5"–18.5"  
480–610 mm / 19"–24"



**Wiper blade Black powder coated – Natural rubber.**

280 mm / 11"	430 mm / 17"
305 mm / 12"	455 mm / 18"
330 mm / 13"	480 mm / 19"
355 mm / 14"	508 mm / 20"
380 mm / 15"	533 mm / 21"
405 mm / 16"	560 mm / 22"

**3 Way toggle switch**

with or without  
LED backlight.



**Roca wiper control**

for synchronized, two speed and intermittent drive of up to 3 motors.

**Washer systems**



For more info: [www.rocamarine.com](http://www.rocamarine.com)