

Orca Electric Bilge Range

Compact and Powerful Electric Bilge Pump Range designed for use with a separate electric bilge switch
Whale's widest range of electric submersible bilge pumps ever

NEW HIGH CAPACITY MODELS

Efficient design with large footprint to ensure maximum surface area exposure to bilge water, now available in higher capacity 2000 and 3000 models.

Product code: see table

Lowest drain down 8mm / 1/3"

Simple plumbing

- 500 models - 19 mm (3/4") ports
- 950, 1300 models - 25mm (1") or 28.5mm (1 1/8") stepped port connections
- 2000 models - 28.5mm (1 1/8")
- 3000 models - 32mm (1 1/4")

Easy maintenance
- easy access to motor cartridge and filter

Easy release cover
- simply press both buttons and pull to release

Robust housing
- fuel resistant ABS

Efficiency
- large surface area ensures maximum area exposed to bilge water

Versatile installation
- choose from multiple wire location options



NEW Widest Range Ever



Features and Benefits

- High performance
- Simple installation
 - Multiple wire locations
- Low amp draw means long battery life
- Easy maintenance
 - Access to motor cartridge and filter area
- Compact design
- Available in a range of 5 flow capacities
 - 500, 950, 1300, 2000 and 3000 US GPH
- 2000 and 3000 models self clearing
 - prevent cavitation

3 Year Warranty

Awards and Accreditations

- Pumps meet ISO8849 marine standard
- CE certified

COMPLETE YOUR SYSTEM

Whale high quality bilge accessories including electric bilge switches, non-return valves, elbows and Y pieces. Page 48 - 51



BE9002 Floatswitch suitable for use with 12 V d.c. or 24 V d.c. pumps
 Note: (Up to 15 amp rated 500, 950, 1300 Orca models)

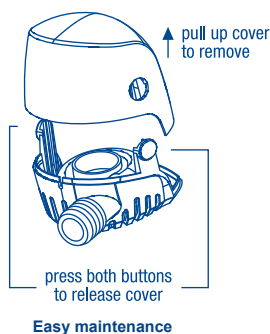
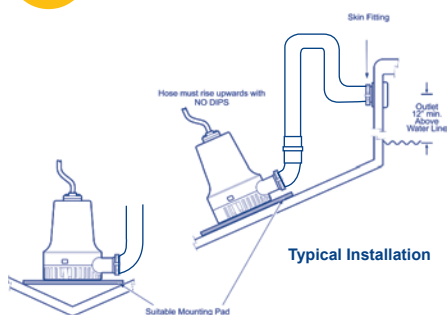


BE9003 Electric field sensor switch suitable for use with 12V d.c. or 24 V d.c. pumps



BE9006 Electric field sensor switch with built-in 30 second time delay suitable for use with 12V d.c. or 24 V d.c. pumps

i Product Information



YOU MAY ALSO LIKE

Orca Auto 1300 – Compact, powerful and automatic submersible bilge pump- page 22

Supersub Smart Automatic narrow low profile submersible bilge pumps – page 20

Supersub – narrow low profile submersible bilge pumps (designed for use with a separate electric bilge switch) – page 18

Model Specifications

Model	500 US GPH	950 US GPH	1300 US GPH	1300 US GPH	2000 US GPH		3000 US GPH	
Product Code	BE0500	BE0950	BE1450	BE1454	BE2002	BE2004	BE3002	BE3004
Open Flow Rate @13.6 V d.c.	500 GPH (32 l/min)	950 GPH (59 l/min)	1300 GPH (82 l/min)		2000 US GPH (126 l/min)		3000 US GPH (189 l/min)	
Flow Rate at 1m (3ft) head	450 GPH (28 l/min)	850 GPH (53 l/min)	1100 GPH (69 l/min)		1650 US GPH (104 l/min)		2700 US GPH (170 l/min)	
Nominal Voltage		12 V d.c.		24 V d.c.	12 V d.c.	24 V d.c.	12 V d.c.	24 V d.c.
Current Draw	1.5 amps	3.5 amps	5.0 amps	2.5 amps	10 amps	5.0 amps	18 amps	9 amps
Recommended Automotive Fuse	2.0 Amp	5.0 Amp	7.5 Amp	5.0 Amp	15 Amp	7.5 Amp	25 Amp	15 Amp
Weight	0.28 kg. (0.6lbs)	0.45 kg. (1 lb)	0.82 kg. (1.8 lbs)		1.32kg (2.9lbs)		2.64kg (5.82lbs)	
Hose Connection	3/4" (19mm)	1 1/8" (25/28.5mm)	1 1/8" (25/28.5mm)		1.32kg (2.9lbs)		2.64kg (5.82lbs)	
Wire Size			1.5mm2 (16 AWG)					
Materials	Pump Body- ABS, Seals: Nitrile®, Impeller: Acetal							
Maximum Discharge Head	3 m (9.8ft)	3.5m (11.5ft)	4.5m (14.8ft)		4 m (13 ft)		4.6 m (15ft)	
Overall Height	83mm (3.3")	109mm (4.3")	129mm (5.1")		165mm (6.5")		195mm (7.7")	
Overall Width	102mm (4")	135mm (5.3")	168mm (6.6")		144mm (5.7")		168mm (6.5")	
Overall Depth	78.5mm (3.1")	103mm (4.1")	121mm (4.8")		120.5mm (4.74")		132mm (5.1")	

Registered design 000627716